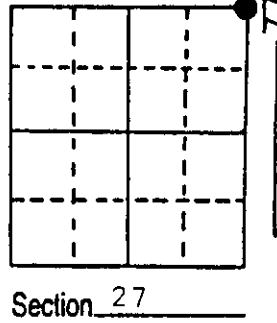


# U.S. PUBLIC LAND SURVEY MONUMENT RECORD

**Note:** This form is intended and designed to fulfill all requirements of Wisconsin Administrative Code, Chapter A-E 5.02, U.S. Public Land Survey Monument Record (3) (a) (b) (c) (d) (e) (f) (g) (h) (i). An additional sheet may be added if necessary to conform with said requirements.

(a) Corner location: Township 38 North  
 Range 4 East/West

Town/City/Village Minocqua  
 County Oneida



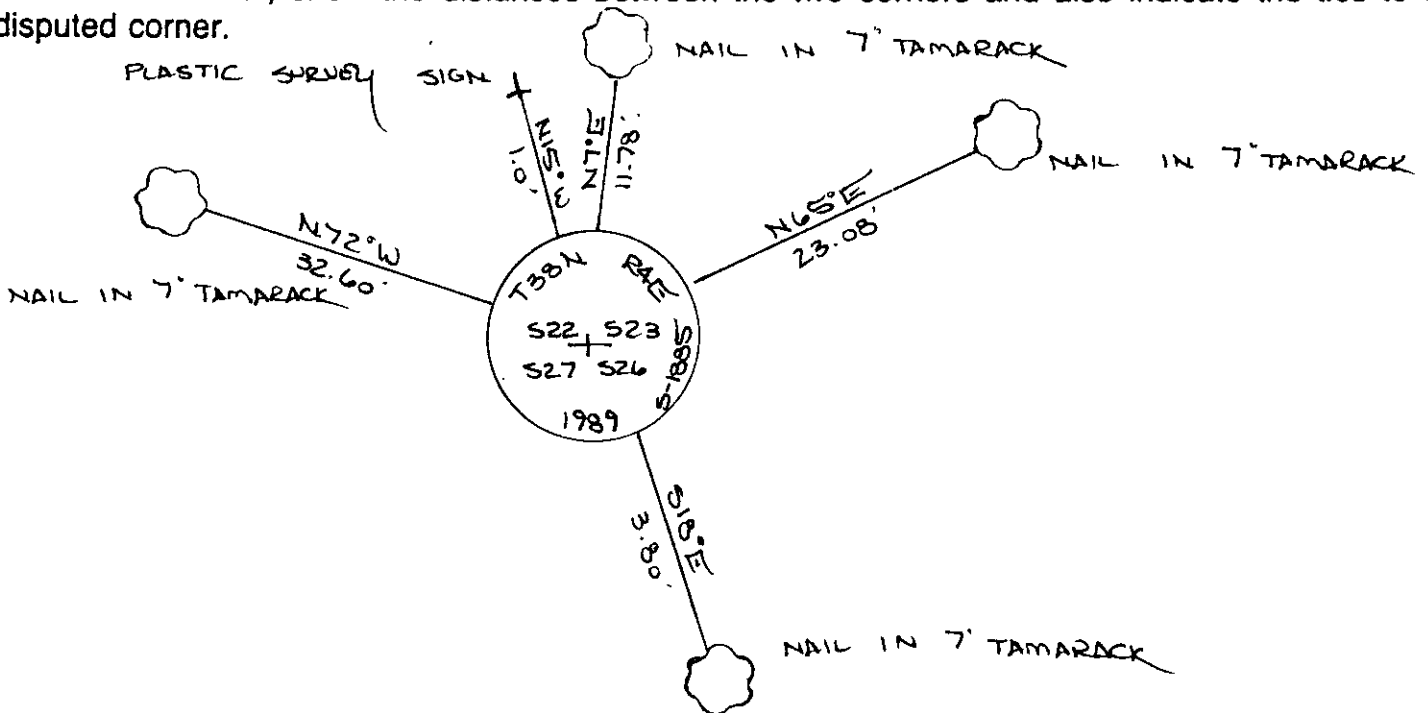
(b) (f) (g) (h) Description of monument found at this corner and if it was accepted, state all evidence (material, testimonial, occupational, plats, records, other monuments) used as a basis for accepting. If not accepted or if nothing was found, state evidence used as basis for establishing location. If reestablished through lost corner proportionate methods, indicate all monuments, distances and directions used to establish.

The Original Government Survey was performed by Alexander Anderson in April & May, 1865. A wood post was set: Tamarack 8' N24E, 18 lks.; Tamarack 6" S60W, 19 lks.

Nekoosa Edwards Paper Co, established this corner in surveys they performed in the 1950s. No monument type or BTs listed.

After determining a search area from our traverse information, I found and accepted the point of a 4" dia. wood post. I believe this is the remains of the Paper Co. corner and not the original. No marks of the original surveyor were found. The following old BTs were found: Tamarack 7' N7E, 11.78'; Tamarack 7' S18E, 3.80'. I replaced the wood post point with an aluminum pipe, 30" long, 2 1/2" dia., 20" in the ground with aluminum cap stamped as shown below. I established the following witnesses: Tamarack 7' N7E, 11.78'; Tamarack 7' S18E, 3.80'; Tamarack 7' N65E, 23.08'; Tamarack 7' N72W, 32.60'; Plastic Survey Sign N15W, 1.0' (distances to nail in trees).

(c) (d) (e) Plan view of corner with ties to at least 4 witness monuments. If in disagreement with previously established corner, show the distances between the two corners and also indicate the ties to the disputed corner.



(i) I, JEFFREY W. AUSTIN S-1885  
 (type or print name) certify that the corner location on this record was determined by me or under my direction and control and that this U.S. Public Land Survey Monument Record is correct and complete to the best of my knowledge and belief.

[Signature] FEBRUARY 1, 1989  
 Signature Date



Index No. R 17

3804220000