

U.S. PUBLIC LAND SURVEY MONUMENT RECORD

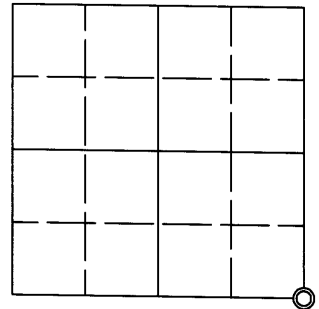
Note: This form is intended and designed to fulfill all requirements of the Wisconsin Administrative Code, Chapter A-E 7.08 U.S. Public Land Monument Record (3)(a)(b)(c)(d)(e)(f)(g)(h)(i). An additional sheet may be added if necessary to conform with said requirements.

(a) CORNER LOCATION:

Southeast corner of Section 23  
Township 38 North  
Range 4 East  
Town of Minocqua  
County of Oneida

O.C. COORDINATES

North: 209711.7422  
East: 128616.9508  
Control Station: O.C. 295  
Latitude: 45°46'24.13997"N  
Longitude: 89°56'42.55785"W  
Datum: NAD 83 (91) Method: RTK



(b) HISTORY OF ORIGINAL CORNER ESTABLISHMENT

Original Surveyor: Alex Anderson, Deputy Surveyor  
Date of Survey: Commenced April 26, 1865  
Completed May 8, 1865

Original B.T.'S: Tamarac 9" S49°W, 30 links (19.80 feet)  
Tamarac 7" N21°W, 40 links (26.40 feet)

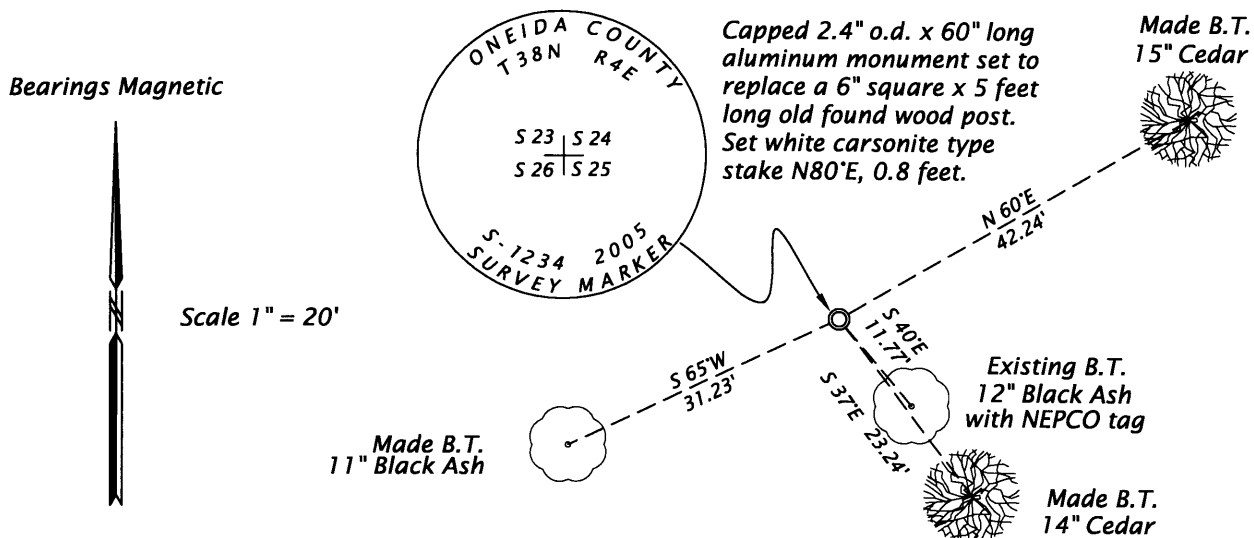
SECTION 23

(f)(g)(h) DESCRIPTION OF MONUMENT FOUND AT THIS CORNER AND IF IT WAS ACCEPTED, STATE ALL EVIDENCE (MATERIAL, TESTIMONIAL, OCCUPATIONAL, PLATS, RECORDS, OTHER MONUMENTS) USED AS A BASIS FOR ESTABLISHING LOCATION. IF NOT ACCEPTED OF IF NOTHING WAS FOUND, STATE EVIDENCE USED AS BASIS FOR ESTABLISHING LOCATION. IF REESTABLISHED THROUGH LOST CORNER PROPORTIONATE METHODS, INDICATE ALL MONUMENTS, DISTANCES AND DIRECTIONS USED TO ESTABLISH. INDICATE TYPE OF MONUMENT AND SIGN POST FOUND OR SET.

December 13, 1937 - Ray H. Hall, CC Camp 75-S, Survey Book 9, Page 27 - Cor. Secs. 23-24-25-26 (Orig) Identify corner by very old stake which agrees with both bearings, SW one is stub 10' hi. marks ok, NW one is stump with boxing apparent. Pencil registrations from 1912. Set new cedar post record dist. from both & mark: New v0' Cedar 6", N84°E, .233 chains (15.38 feet) & Cedar 6", S13°E, .353 chains (23.30 feet).

July 27, 2005 - James D. Rein, RLS No. 1234: We recover an old 6" square x 5 feet long wood post referenced by the rotted original bearing tree stump with boxing bearing S52°W, 20.25 feet; Hall's 13" Cedar stump bearing East, 15.49 feet and a NEPCO tag on a 12" Black Ash bearing S40°E, 11.77 feet. We replace the wood post with a capped 2.4" o.d. x 60" long aluminum monument and made additional bearing trees as shown below in plan. Bearing tree measurements were made to aluminum nails set in the center of the root crown on side of trees. Set white carsonite type stake N80°E, 0.8 feet from corner.

(c)(d)(e) PLAN VIEW OF CORNER WITH TIES TO AT LEAST 4 WITNESS MONUMENTS. IF IN DISAGREEMENT WITH PREVIOUSLY ESTABLISHED CORNER, SHOW THE DISTANCE BETWEEN THE TWO CORNERS AND ALSO INDICATE THE TIES TO THE DISPUTED CORNER.



(i) I, JAMES D. REIN, REGISTERED LAND SURVEYOR NO. S-1234 HEREBY CERTIFY THAT THE CORNER LOCATION ON THIS RECORD WAS DETERMINED BY ME OR UNDER MY DIRECTION AND CONTROL AND THAT THIS U.S. PUBLIC LAND SURVEY MONUMENT RECORD IS CORRECT AND COMPLETE TO THE BEST OF MY KNOWLEDGE AND BELIEF.

SIGNATURE [Handwritten Signature]

DATE 2/28/06 3804280000

