

At _____ O'Clock _____ M

U.S. PUBLIC LAND SURVEY MONUMENT RECORD

Note: This form is intended and designed to fulfill all requirements of the Wisconsin Administrative Code, Chapter A-E 7.08 U.S. Public Land Monument Record (3)(a)(b)(c)(d)(e)(f)(g)(h)(i). An additional sheet may be added if necessary to conform with said requirements.

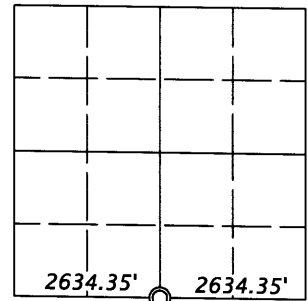
(a) CORNER LOCATION:

South 1/4 corner of Section 23
Township 38 North
Range 4 East
Town of Minocqua
County of Oneida

O. C. COORDINATES

North: 209728.1522
East: 125982.6563
Control Station: O. C. 295
Latitude: 45°46'24.13997"N
Longitude: 89°56'42.55785"W
Datum: NAD 83 (91)
Method: RTK offset traverse

SECTION 23



N89°38'35"W 5268.70'
G. = S89°54'W 80.11 ch.
Bearings Oneida County Grid

(b) HISTORY OF ORIGINAL CORNER ESTABLISHMENT

Original Surveyor: Alex Anderson, Deputy Surveyor
Date of Survey: Commenced: April 26, 1865
Completed: May 8, 1865

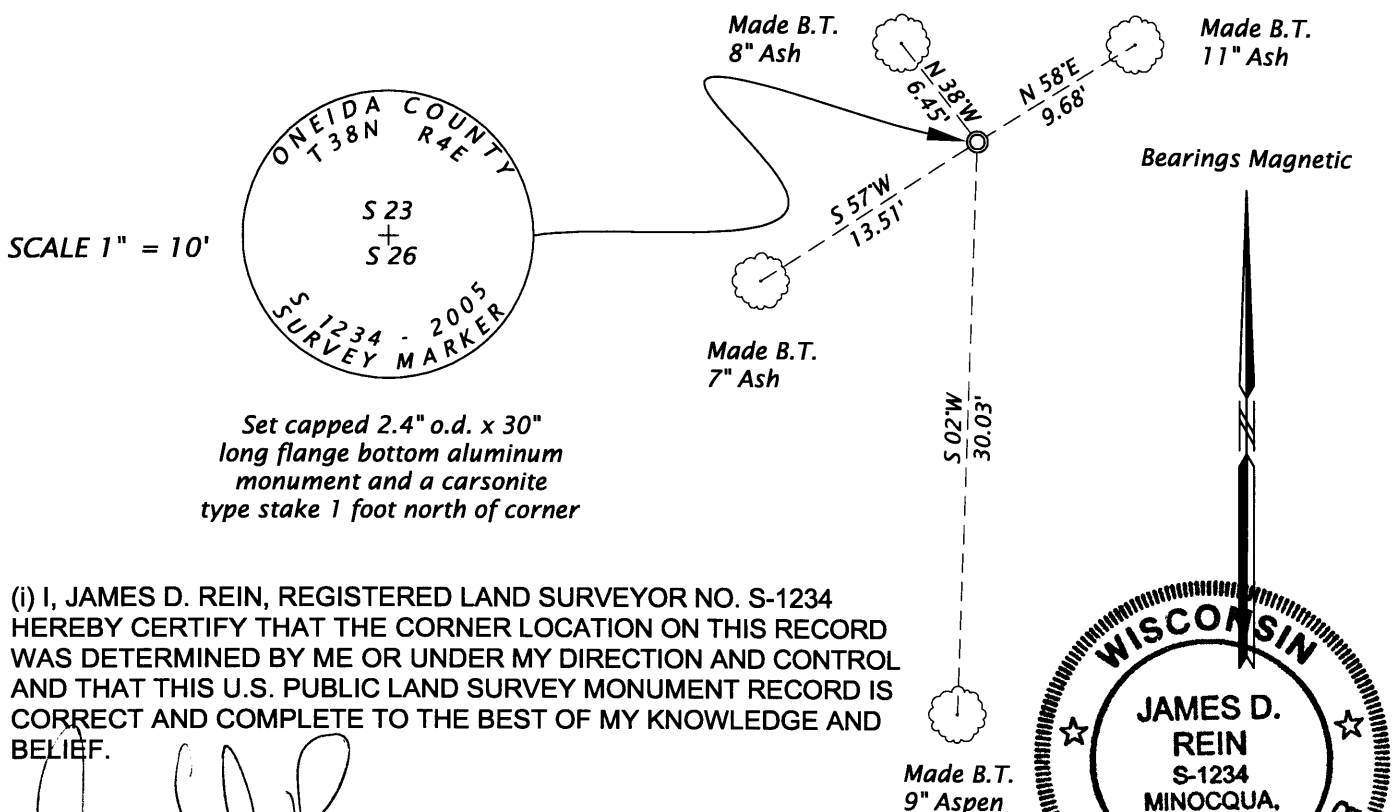
Original B.T.'S: Cedar 10" N76°W, 19 links (12.54 feet)
Tamarac 10" S31°E, 37 links (24.42 feet)

(f)(g)(h) DESCRIPTION OF MONUMENT FOUND AT THIS CORNER AND IF IT WAS ACCEPTED, STATE ALL EVIDENCE (MATERIAL, TESTIMONIAL, OCCUPATIONAL, PLATS, RECORDS, OTHER MONUMENTS) USED AS A BASIS FOR ESTABLISHING LOCATION. IF NOT ACCEPTED OF IF NOTHING WAS FOUND, STATE EVIDENCE USED AS BASIS FOR ESTABLISHING LOCATION. IF REESTABLISHED THROUGH LOST CORNER PROPORTIONATE METHODS, INDICATE ALL MONUMENTS, DISTANCES AND DIRECTIONS USED TO ESTABLISH. INDICATE TYPE OF MONUMENT AND SIGN POST FOUND OR SET.

1950's - Nekoosa Papers Inc. map filed in Oneida County Surveyor's Office, NEPCO Book 2, image 23 identifies corner monumented by a wood post at a single proportionate position based upon an approximate staff compass and chain survey.

September 21, 2005 - James D. Rein, RLS No. 1234: We search but are unable to recover any evidence of the original corner, or perpetuation of the the original corner location, thus we re-establish it's position by single proportionate measurement between the section corners, as shown above in the diagram. We monument the corner with a capped 2.4" o.d. x 30" long flange bottom aluminum monument and make bearing trees with the distance measurements to aluminum nails set in the center of the root crown on the sides of the trees facing the corner as shown in the plan. We also set a white carsonite type stake 1 foot north of the corner monument. An old wood post bears North 2.5 feet from the corner.

(c)(d)(e) PLAN VIEW OF CORNER WITH TIES TO AT LEAST 4 WITNESS MONUMENTS. IF IN DISAGREEMENT WITH PREVIOUSLY ESTABLISHED CORNER, SHOW THE DISTANCE BETWEEN THE TWO CORNERS AND ALSO INDICATE THE TIES TO THE DISPUTED CORNER.



(i) I, JAMES D. REIN, REGISTERED LAND SURVEYOR NO. S-1234 HEREBY CERTIFY THAT THE CORNER LOCATION ON THIS RECORD WAS DETERMINED BY ME OR UNDER MY DIRECTION AND CONTROL AND THAT THIS U.S. PUBLIC LAND SURVEY MONUMENT RECORD IS CORRECT AND COMPLETE TO THE BEST OF MY KNOWLEDGE AND BELIEF.

[Signature]
SIGNATURE

2/20/06
DATE 3804230020

INDEX NO. R-19