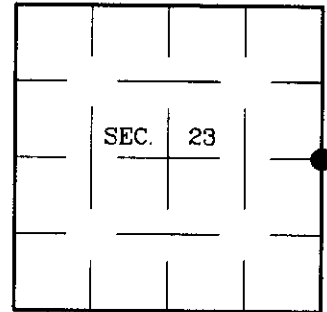


U.S. PUBLIC LAND SURVEY MONUMENT RECORD

Note: This form is intended and designed to fulfill all requirements of Wisconsin Administrative Code, Chapter A-E 7.08 U.S. Public Land Survey Monument Record (3)(a)(b)(c)(d)(e)(f)(g)(h)(i). An additional sheet may be added if necessary to conform with said requirements.

(a) CORNER LOCATION: Plane Coordinates
 1/4 Corner common to Secs. 23 and 24 X:
 Township 38 North Y:
 Range 4 East, 4th Principal Meridian Datum:
 Town of Minocqua County of Oneida



(b) HISTORY OF ORIGINAL CORNER ESTABLISHMENT

Original Surveyor: Alexander Anderson
 Date of Survey: Commenced: April 26, 1865
 Completed: May 8, 1865

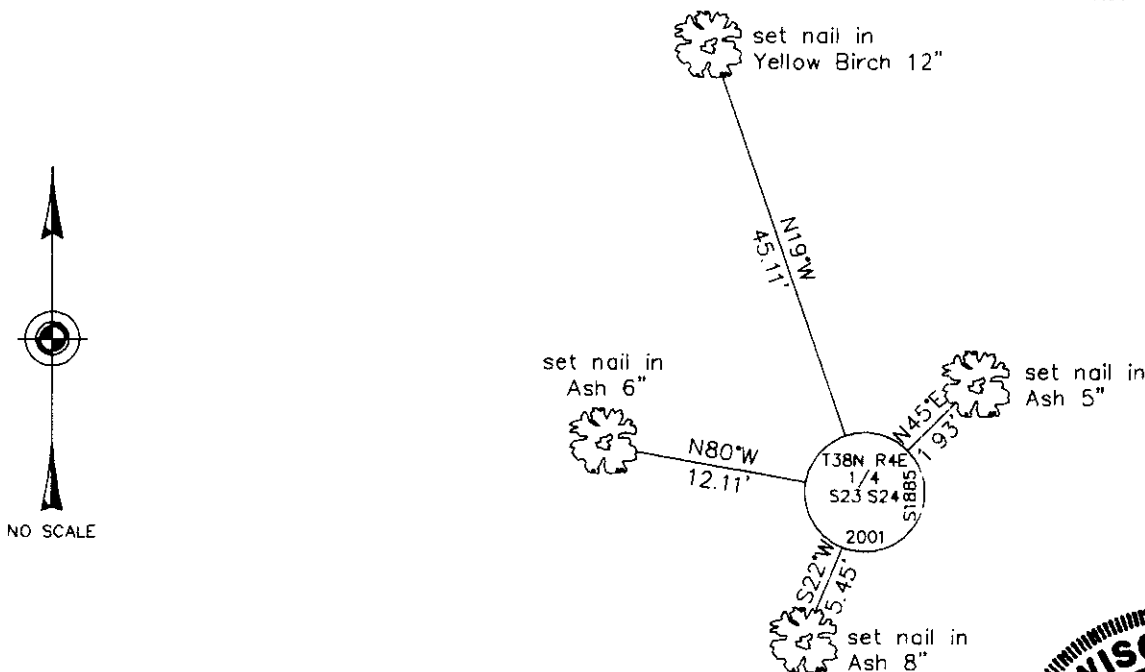
Original Accessories:
 Cedar 7 N49°W 11 lks.
 Cedar 5 S45°E 10 lks.

(b)(f)(g)(h) Description of monument found at this corner and if it was accepted, state all evidence (material, testimonial, occupational, plats, records, other monuments) used as a basis for accepting. If not accepted or if nothing was found, state evidence used as basis for establishing location. If reestablished through lost corner proportionate methods, indicate all monuments, distances and directions used to establish. Indicate type of monument and sign post found or set.

April 25, 1942: Maine Book 2, Page 65. Found original government 1/4 stake. New stake and new BT's: Cedar 16 S82°W, 0.364; Cedar 7 S9°W, 0.315.

May 5, 2001: I found and accepted an iron pipe, 30 ins. long, 1 ins. diam., with broken 4 ins. diam. scribed cedar post. I replaced the pipe with an aluminum post, 30 ins. long, 2-1/2 ins. diam., with a 3-1/4 ins. diam. Oneida Co. aluminum cap, 2 ins. above the ground surface, marked as shown below. Maine's wind-thrown Cedar, 9 ins. diam. bears S15°W, 20.8 ft. dist. Maine's wind-thrown Cedar, 14 ins. diam. bears N82°W, 24.1 ft. dist. I found or established accessories as shown below and set a plastic sign post bearing East, 1 ft. dist.

(c)(d)(e) Plan view of corner with ties to at least 4 witness monuments. If in disagreement with previously established corner, show the distances between the two corners and also indicate the ties to the disputed.



(i) I, Jeffrey W. Austin, Registered Land Surveyor No. S-1885, hereby certify that the corner location on this record was determined by me or under my direction and control and that this U.S. Public Land Survey Monument Record is correct and complete to the best of my knowledge and belief.

Signature

3-22-01

Date



INDEX NO. P-21

3804232000