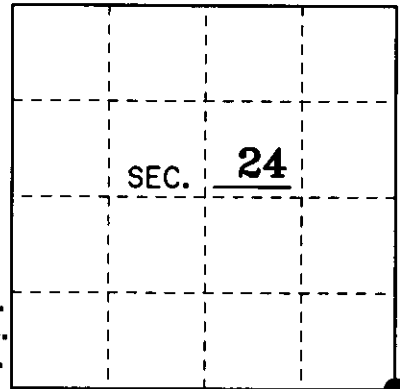


# U.S. PUBLIC LAND SURVEY MONUMENT RECORD

Note: This form is intended and designed to fulfill all requirements of Wisconsin Administrative Code, Chapter A-E 7.08 U.S. Public Land Monument Record (3)(a)(b)(c)(d)(e)(f)(g)(h)(i). An additional sheet may be added if necessary to conform with said requirements.

(a) CORNER LOCATION: Southeast County or State Plane Coordinates  
 Section 24 Corner of Section 24 Northing \_\_\_\_\_  
 Township 38 North Easting \_\_\_\_\_  
 Range 4 East Datum Base \_\_\_\_\_  
 Township/City Minocqua County of ONEIDA



(b) HISTORY OF ORIGINAL CORNER ESTABLISHMENT Original B.T.'s  
 Original Surveyor: Alfred Millard 4" Spruce S 50° E 10 Lks.  
 Date of Survey: September 1860 4" Spruce S 50° W 13 Lks.  
 3" Spruce N 77° E 22 Lks.  
 3" Spruce N 77° W 15 Lks.

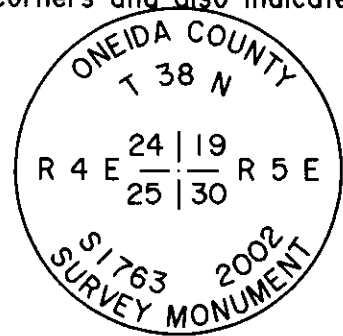
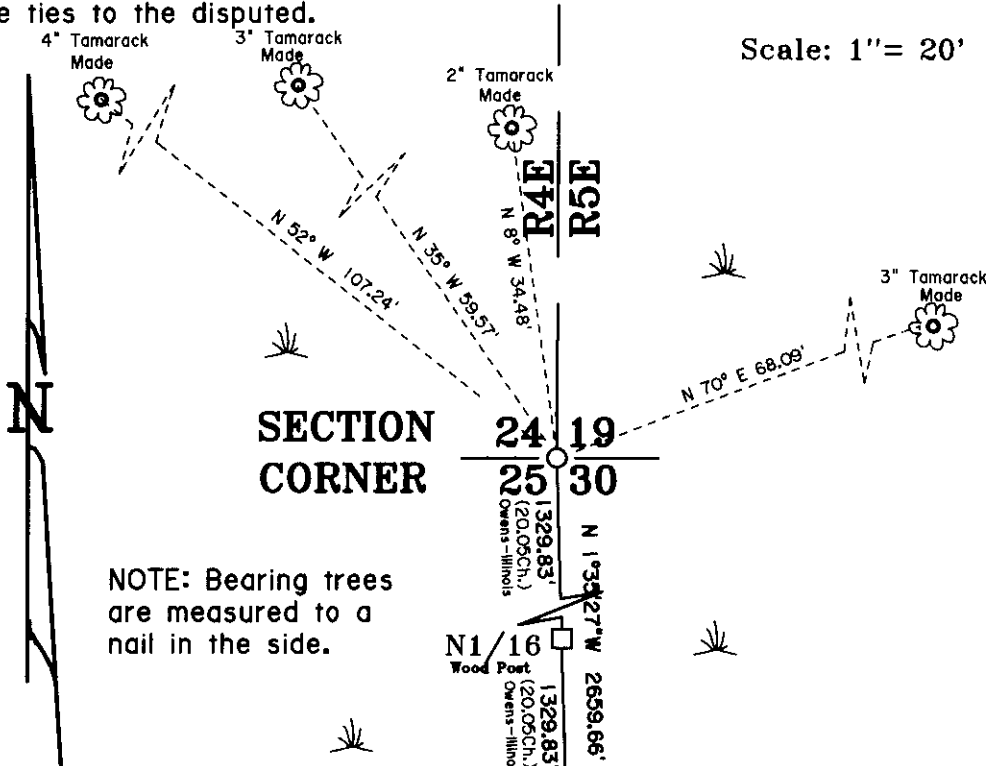
(b)(f)(g)(h) Description of monument found at this corner and if it was accepted, state all evidence (material, testimonial, occupational, plats, records, other monuments) used as a basis for accepting. If not accepted or if nothing was found, state evidence used as basis for establishing location. If reestablished through lost corner proportionate methods, indicate all monuments, distances and directions used to establish. Indicate type of monument and sign post found or set.

1957: Ownership boundary survey drawn by W.H. Stuth of Owens Illinois shows work done by Hallisy in 1957 in the East 1/2 of Section 30, T 38 N, R 5 E, but this survey also shows a corner "by others" at this Section corner location. This survey also shows the 1/16 corner and 1/4 corner South of this Section corner.

5/21/1986: W.H. Stuth of Owens-Illinois shows a survey by Becker in 1957 with this corner "by others".

1/28/2002: I, Thomas A. Boettcher, after a thorough search determined that there was no evidence of the corner. I reset this corner by doubling up from the 1/4 corner and N1/16 corner to the South as shown on the above mentioned 1957 Hallisy survey. I set a 2-1/2" x 48" Oneida County aluminum monument stamped as shown below and made four new B.T.'s as shown below. I also set a plastic sign post 1' Northeast of the corner.

(c)(d)(e) Plan view of the corner with ties to at least 4 witness monuments. If in disagreement with previously established corner, show the distances between the two corners and also indicate the ties to the disputed.

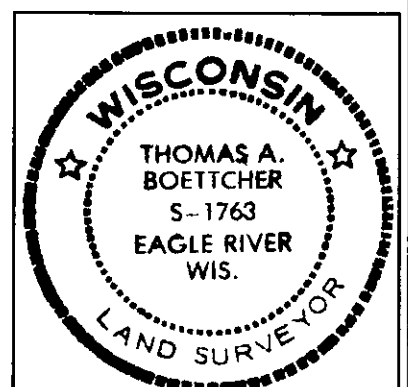


NOTE: Bearing trees are measured to a nail in the side.

Oneida County Aluminum Monument See USPLS Mon.record

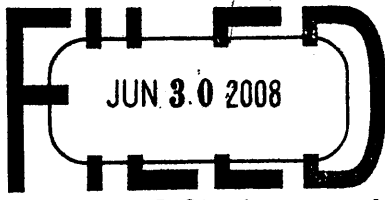
(i) I, Thomas A. Boettcher 1/4 R.L.S. No. 1763  
 hereby certify that the corner location on this record was determined by me or under my direction and control and that this U.S. Public Land Survey Monument Record is correct and complete to the best of my knowledge and belief.

Signature [Signature] Date 1/28/2002



Index No. R-25

3804240000



At \_\_\_\_\_ O'Clock \_\_\_\_\_ M  
**THOMAS H. LEIGHTON**  
REGISTER OF DEEDS

**U.S. PUBLIC LAND SURVEY MONUMENT RECORD**

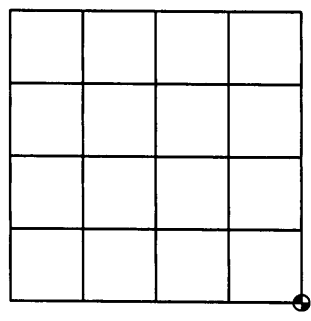
Note: This form is intended and designed to fulfill all requirements of the Wisconsin Administrative Code, Chapter A-E 7.08 U.S. Public Land Monument Record (3)(a)(b)(c)(d)(e)(f)(g)(h)(i). An additional sheet may be added if necessary to conform with said requirements.

**(a) CORNER LOCATION:**

Southeast corner of Section 24  
Township 38 North  
Range 4 East  
Town of Minocqua  
County of Oneida

**O.C. COORDINATES**

North: 209999.8912  
East: 133821.9026  
Control Station: O.C. #295  
Latitude: 45°46'27.13998"N  
Longitude: 89°56'42.55785"W  
Datum: NAD 83 (1991) Method: RTK



SECTION 24

**(b) HISTORY OF ORIGINAL CORNER ESTABLISHMENT**

Original Surveyor: Alfred Millard  
Date of Survey: Commenced - August 1860  
Completed - September 1860

Original B.T.'S: Spruce 4" S50°E 10 links  
Spruce 4" S50°W 13 links  
Spruce 3" N77°E 22 links  
Spruce 3" N77°W 15 links

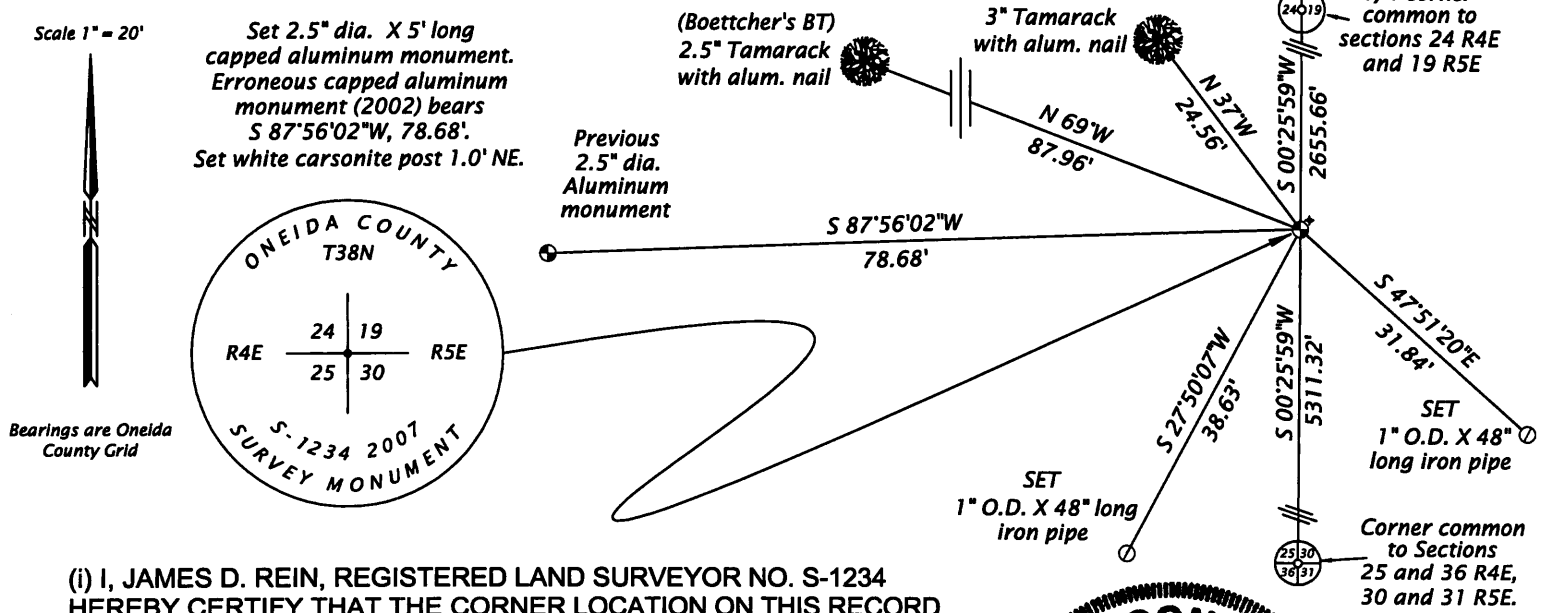
**(f)(g)(h) DESCRIPTION OF MONUMENT FOUND AT THIS CORNER AND IF IT WAS ACCEPTED, STATE ALL EVIDENCE (MATERIAL, TESTIMONIAL, OCCUPATIONAL, PLATS, RECORDS, OTHER MONUMENTS) USED AS A BASIS FOR ESTABLISHING LOCATION. IF NOT ACCEPTED OF IF NOTHING WAS FOUND, STATE EVIDENCE USED AS BASIS FOR ESTABLISHING LOCATION. IF REESTABLISHED THROUGH LOST CORNER PROPORTIONATE METHODS, INDICATE ALL MONUMENTS, DISTANCES AND DIRECTIONS USED TO ESTABLISH. INDICATE TYPE OF MONUMENT AND SIGN POST FOUND OR SET.**

1957 - Map prepared by W.H. Stuth on February 4, 1989 (Filed in NEPCO Book No. 2 Page No. 35 at the Oneida County Land Records office) indicates a post.

2002 - Thomas A. Boettcher, RLS No. 1763, per USPLS Monument Record No. 3804240000 filed at Oneida County Land Records Office, set a 2.5" X 48" Oneida County Aluminum Monument by "doubling up from the 1/4 corner and N11/16 corner to the South" referencing said NEPCO survey.

June 13, 2007 - James D. Rein, RLS No. 1234, Recover and examine evidence established by Boettcher. Having conducted search for original evidence of corner and having found none, I monument the corner position by single proportionate measurement between the original corner to Sec. 25-30-31-36 and the original corner to Sec. 19 & 24. This position is harmonious with the remaining recovered original corners on the range line at the quarter corner between Sec. 7 & 12, and township corner 31-36-6-1. I do not accept the corner remonumented by Boettcher based upon the approximate staff compass survey by NEPCO in 1957.

**(c)(d)(e) PLAN VIEW OF CORNER WITH TIES TO AT LEAST 4 WITNESS MONUMENTS. IF IN DISAGREEMENT WITH PREVIOUSLY ESTABLISHED CORNER, SHOW THE DISTANCE BETWEEN THE TWO CORNERS AND ALSO INDICATE THE TIES TO THE DISPUTED CORNER.**



(i) I, JAMES D. REIN, REGISTERED LAND SURVEYOR NO. S-1234 HEREBY CERTIFY THAT THE CORNER LOCATION ON THIS RECORD WAS DETERMINED BY ME OR UNDER MY DIRECTION AND CONTROL AND THAT THIS U.S. PUBLIC LAND SURVEY MONUMENT RECORD IS CORRECT AND COMPLETE TO THE BEST OF MY KNOWLEDGE AND BELIEF.

*[Signature]*  
SIGNATURE

9/02/07  
DATE 3804240000



INDEX NO. X-25