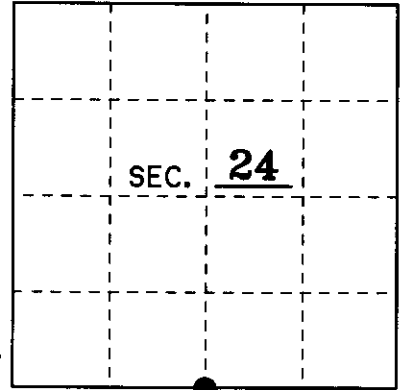


U.S. PUBLIC LAND SURVEY MONUMENT RECORD

Note: This form is intended and designed to fulfill all requirements of Wisconsin Administrative Code, Chapter A-E 7.08 U.S. Public Land Monument Record (3)(a)(b)(c)(d)(e)(f)(g)(h)(i). An additional sheet may be added if necessary to conform with said requirements.

(a) CORNER LOCATION: South Line County or State Plane Coordinates
S1/4 Corner of Section 24 Northing _____
 Township 38 North Easting _____
 Range 4 East Datum Base _____
 Township/City Minocqua County of Oneida



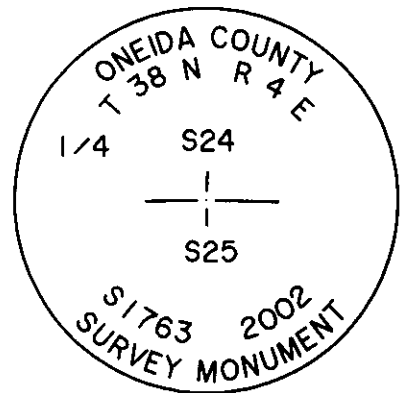
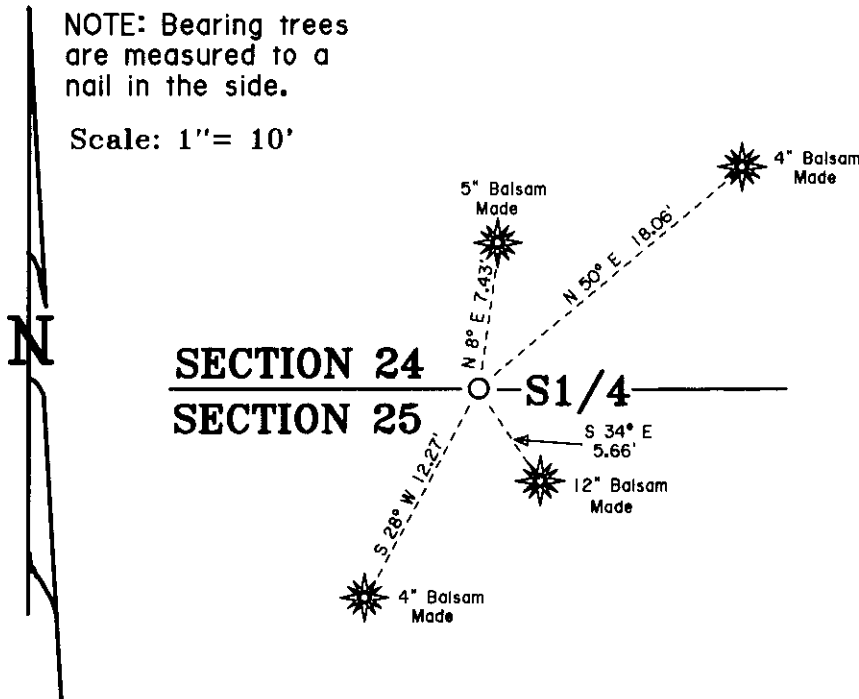
(b) HISTORY OF ORIGINAL CORNER ESTABLISHMENT Original B.T.'s
 Original Surveyor: Alex Anderson 4" Aspen N 30° W 18 Lks.
 Date of Survey: May 1865 12" W. Pine S 50° E 13 Lks.

(b)(f)(g)(h) Description of monument found at this corner and if it was accepted, state all evidence (material, testimonial, occupational, plats, records, other monuments) used as a basis for accepting. If not accepted or if nothing was found, state evidence used as basis for establishing location. If reestablished through lost corner proportionate methods, indicate all monuments, distances and directions used to establish. Indicate type of monument and sign post found or set.

I could find no survey records for this corner after the original survey, but a Nekoosa Edwards plat book shows this corner in place.

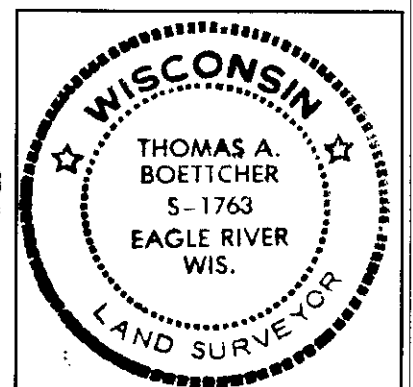
2/6/2002: I, Thomas A. Boettcher, found a 1-1/4" iron pipe in place extending 0.9' above the ground. A blue line runs East from this pipe along the Section line and the area is logged South of the blue line. I replaced this iron pipe with a 2-1/2" x 30" Oneida County aluminum monument stamped as shown below. I left the iron pipe inside the monument to aid in locating with a magnetic locator. I made four new B.T.'s as shown below. I also found an orange plastic guard post 0.6' South of the corner.

(c)(d)(e) Plan view of the corner with ties to at least 4 witness monuments. If in disagreement with previously established corner, show the distances between the two corners and also indicate the ties to the disputed.



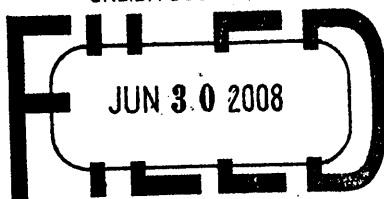
(i) I, Thomas A. Boettcher R.L.S. No. 1763
 hereby certify that the corner location on this record was determined by me or under my direction and control and that this U.S. Public Land Survey Monument Record is correct and complete to the best of my knowledge and belief.

Signature [Signature] Date 2/6/2002



Index No. R-23

3804240020



At _____ O'Clock _____ M

U.S. PUBLIC LAND SURVEY MONUMENT RECORD

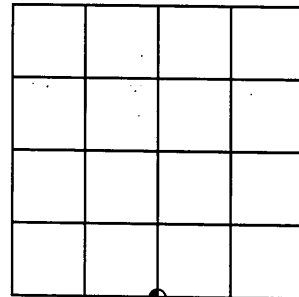
Note: This form is intended and designed to fulfill all requirements of the Wisconsin Administrative Code, Chapter A-E 7.08 U.S. Public Land Monument Record (3)(a)(b)(c)(d)(e)(f)(g)(h)(i). An additional sheet may be added if necessary to conform with said requirements.

(a) CORNER LOCATION:

South quarter corner of Section 24
Township 38 North
Range 4 East
Town of Minocqua
County of Oneida

O.C. COORDINATES

North: 209855.8167
East: 131219.4267
Control Station: O.C. #295
Latitude: 45°46'27.13998"N
Longitude: 89°56'42.55785"W
Datum: NAD 83 (1991) Method: Offset



SECTION 24

(b) HISTORY OF ORIGINAL CORNER ESTABLISHMENT

Original Surveyor: Alex Anderson
Date of Survey: Commenced - July 13th, 1864
Completed - July 24th, 1864

Original B.T.'S: Aspen 4" N30°W 18 links
White Pine 12" S50°E 13 links

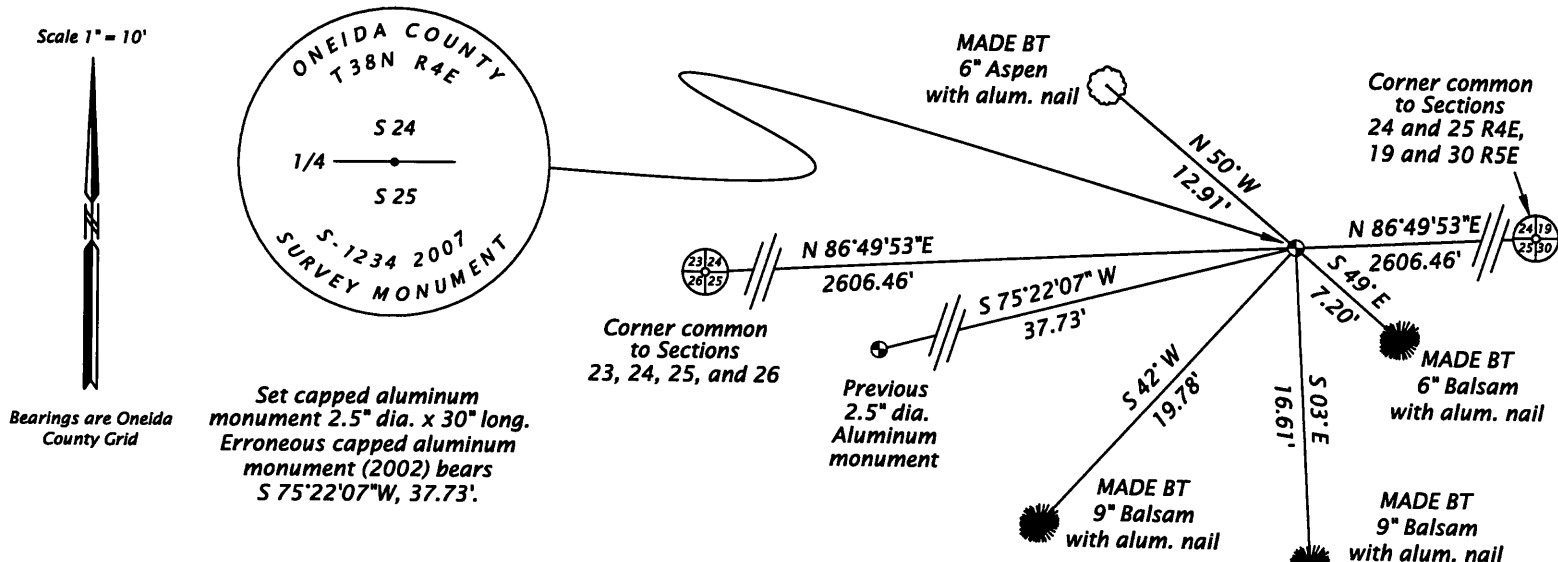
(f)(g)(h) DESCRIPTION OF MONUMENT FOUND AT THIS CORNER AND IF IT WAS ACCEPTED, STATE ALL EVIDENCE (MATERIAL, TESTIMONIAL, OCCUPATIONAL, PLATS, RECORDS, OTHER MONUMENTS) USED AS A BASIS FOR ESTABLISHING LOCATION. IF NOT ACCEPTED OF IF NOTHING WAS FOUND, STATE EVIDENCE USED AS BASIS FOR ESTABLISHING LOCATION. IF REESTABLISHED THROUGH LOST CORNER PROPORTIONATE METHODS, INDICATE ALL MONUMENTS, DISTANCES AND DIRECTIONS USED TO ESTABLISH. INDICATE TYPE OF MONUMENT AND SIGN POST FOUND OR SET.

1957 - Map prepared by W.H. Stuth on February 4, 1989 (Filed in NEPCO Book No. 2 Page No. 35 at the Oneida County Land Records office) indicates a post.

February 6, 2002 - Thomas A. Boettcher, RLS No. 1763, per USPLS Monument Record No. 3804240020 filed at Oneida County Land Records Office, found a 1.25" iron pipe, and set a 2.5" X 30" Oneida County Aluminum Monument over the top of the found pipe.

April 18, 2007 - James D. Rein, RLS No. 1234, recover and examine evidence established by Boettcher. The 1957 NEPCO map in Section 25 states that it represents a "Staff Compass Approximate Survey". It shows a composite section subdivision and includes a legend that identifies monuments "BY OTHERS", this corner is clearly shown as a single proportioned corner. The iron pipe recovered by Boettcher is a perpetuation of NEPCO's set wood post. Therefore I do not accept Boettcher's location and reset by single proportionate measurement on a line between the Southwest corner of Section 24 and the Southeast corner of Section 24 and set a capped aluminum monument with accessories as shown in plan.

(c)(d)(e) PLAN VIEW OF CORNER WITH TIES TO AT LEAST 4 WITNESS MONUMENTS. IF IN DISAGREEMENT WITH PREVIOUSLY ESTABLISHED CORNER, SHOW THE DISTANCE BETWEEN THE TWO CORNERS AND ALSO INDICATE THE TIES TO THE DISPUTED CORNER.



(i) I, JAMES D. REIN, REGISTERED LAND SURVEYOR NO. S-1234 HEREBY CERTIFY THAT THE CORNER LOCATION ON THIS RECORD WAS DETERMINED BY ME OR UNDER MY DIRECTION AND CONTROL AND THAT THIS U.S. PUBLIC LAND SURVEY MONUMENT RECORD IS CORRECT AND COMPLETE TO THE BEST OF MY KNOWLEDGE AND BELIEF.

SIGNATURE *[Handwritten Signature]*

DATE *9/02/07* *3804240020*



INDEX NO. R-23