

At _____ O'Clock _____ M

U.S. PUBLIC LAND SURVEY MONUMENT RECORD

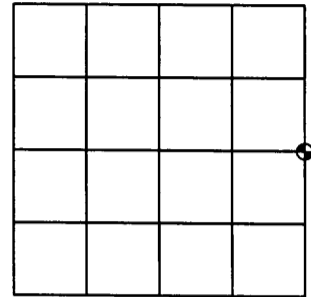
Note: This form is intended and designed to fulfill all requirements of the Wisconsin Administrative Code, Chapter A-E 7.08 U.S. Public Land Monument Record (3)(a)(b)(c)(d)(e)(f)(g)(h)(i). An additional sheet may be added if necessary to conform with said requirements.

(a) CORNER LOCATION:

East quarter corner of Section 24
Township 38 North
Range 4 East
Town of Minocqua
County of Oneida

O.C. COORDINATES

North: 212655.4764
East: 133841.9794
Control Station: O.C. #295
Latitude: 45°46'27.13998"N
Longitude: 89°56'42.55785"W
Datum: NAD 83 (1991) Method: RTK



SECTION 24

(b) HISTORY OF ORIGINAL CORNER ESTABLISHMENT

Original Surveyor: Alfred Millard

Date of Survey: Commenced - August 1860
Completed - September 1860

Original B.T.'S: Tamarack 4" N10°W 8 links
Tamarack 4" N21°E 22 links

(f)(g)(h) DESCRIPTION OF MONUMENT FOUND AT THIS CORNER AND IF IT WAS ACCEPTED, STATE ALL EVIDENCE (MATERIAL, TESTIMONIAL, OCCUPATIONAL, PLATS, RECORDS, OTHER MONUMENTS) USED AS A BASIS FOR ESTABLISHING LOCATION. IF NOT ACCEPTED OF IF NOTHING WAS FOUND, STATE EVIDENCE USED AS BASIS FOR ESTABLISHING LOCATION. IF REESTABLISHED THROUGH LOST CORNER PROPORTIONATE METHODS, INDICATE ALL MONUMENTS, DISTANCES AND DIRECTIONS USED TO ESTABLISH. INDICATE TYPE OF MONUMENT AND SIGN POST FOUND OR SET.

January 4th, 1934 - R.H. Hall, surveyor, per notes on Page 158 of Hall book No. 1 filed at Oneida County Land Records Office, recovers original post and bearing trees, sets new post to replace original and makes a new bearing tree: Cedar 5" N38°E 49.8'.

January 24th, 1936 - R.H. Hall, surveyor, per notes on Page 111 of CCC book No. 2 filed at Oneida County Land Records Office, sets a capped county monument with 12" exposed.

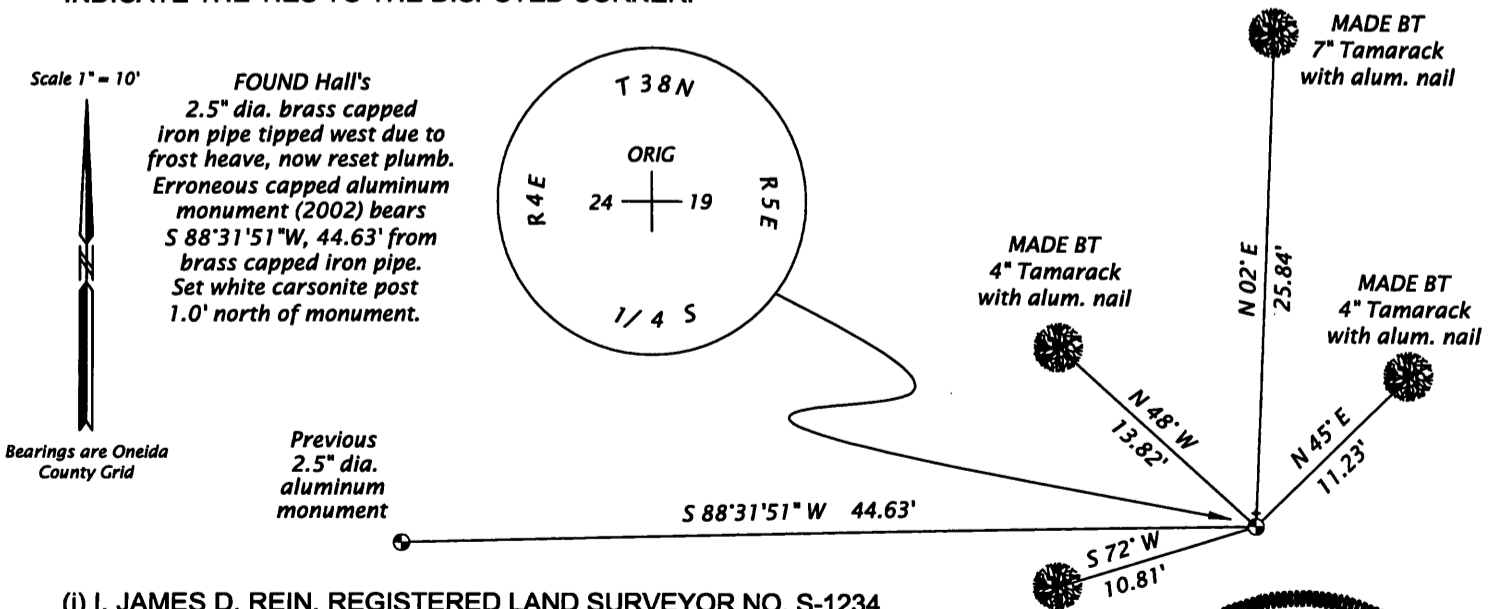
April 21st, 1938 - V.M. Maine, Oneida County Surveyor, per notes on Page 64 of Maine Book No. 2 filed at Oneida County Land Records Office recovers evidence of both original bearing trees and Ray Hall's iron pipe with brass cap.

1957 - Map prepared by W.H. Stuth on February 4, 1989 (Filed in NEPCO Book No. 2 Page No. 35 at the Oneida County Land Records office) indicates a monument set BY OTHERS.

2002 - Thomas A. Boettcher, RLS No. 1763, per survey map No. B5008 filed at Oneida County Land Records Office, set a 2.5" X 30" Oneida County Aluminum Monument by single proportionate measurement.

April 18, 2007 - James D. Rein, RLS No. 1234, recover and examine evidence established by Boettcher. Also recover Hall's 2.5" dia. X 4' long iron pipe with 3" brass cap, with anchor, tipped west in swamp by frost. Reset monument plumb and make new accessories as shown in the plan.

(c)(d)(e) PLAN VIEW OF CORNER WITH TIES TO AT LEAST 4 WITNESS MONUMENTS. IF IN DISAGREEMENT WITH PREVIOUSLY ESTABLISHED CORNER, SHOW THE DISTANCE BETWEEN THE TWO CORNERS AND ALSO INDICATE THE TIES TO THE DISPUTED CORNER.



(i) I, JAMES D. REIN, REGISTERED LAND SURVEYOR NO. S-1234 HEREBY CERTIFY THAT THE CORNER LOCATION ON THIS RECORD WAS DETERMINED BY ME OR UNDER MY DIRECTION AND CONTROL AND THAT THIS U.S. PUBLIC LAND SURVEY MONUMENT RECORD IS CORRECT AND COMPLETE TO THE BEST OF MY KNOWLEDGE AND BELIEF.

SIGNATURE *[Handwritten Signature]*

DATE 9/02/07
3804242000



INDEX NO. P-25