

At _____ O'Clock _____ M
THOMAS H. LEIGHTON
REGISTER OF DEEDS

U.S. PUBLIC LAND SURVEY MONUMENT RECORD

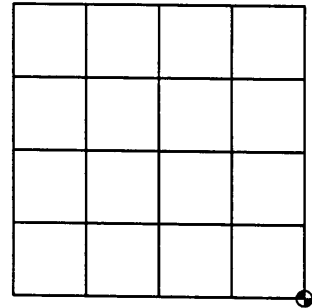
Note: This form is intended and designed to fulfill all requirements of the Wisconsin Administrative Code, Chapter A-E 7.08 U.S. Public Land Monument Record (3)(a)(b)(c)(d)(e)(f)(g)(h)(i). An additional sheet may be added if necessary to conform with said requirements.

(a) CORNER LOCATION:

Southeast corner of Section 25
Township 38 North
Range 4 East
Town of Minocqua
County of Oneida

O.C. COORDINATES

North: 204688.7207
East: 133781.7490
Control Station: O.C. #295
Latitude: 45°46'27.13998"N
Longitude: 89°56'42.55785"W
Datum: NAD 83 (1991) Method: RTK



SECTION 25

(b) HISTORY OF ORIGINAL CORNER ESTABLISHMENT

Original Surveyor: Alfred Millard
Date of Survey: Commenced - August 1860
Completed - September 1860

Original B.T.'S: Tamarack 4" N15°W 12 links
Tamarack 4" N45°E 8 links
Tamarack 5" S15°W 16 links
Tamarack 4" S60°E 14 links

(f)(g)(h) DESCRIPTION OF MONUMENT FOUND AT THIS CORNER AND IF IT WAS ACCEPTED, STATE ALL EVIDENCE (MATERIAL, TESTIMONIAL, OCCUPATIONAL, PLATS, RECORDS, OTHER MONUMENTS) USED AS A BASIS FOR ESTABLISHING LOCATION. IF NOT ACCEPTED OF IF NOTHING WAS FOUND, STATE EVIDENCE USED AS BASIS FOR ESTABLISHING LOCATION. IF REESTABLISHED THROUGH LOST CORNER PROPORTIONATE METHODS, INDICATE ALL MONUMENTS, DISTANCES AND DIRECTIONS USED TO ESTABLISH. INDICATE TYPE OF MONUMENT AND SIGN POST FOUND OR SET.

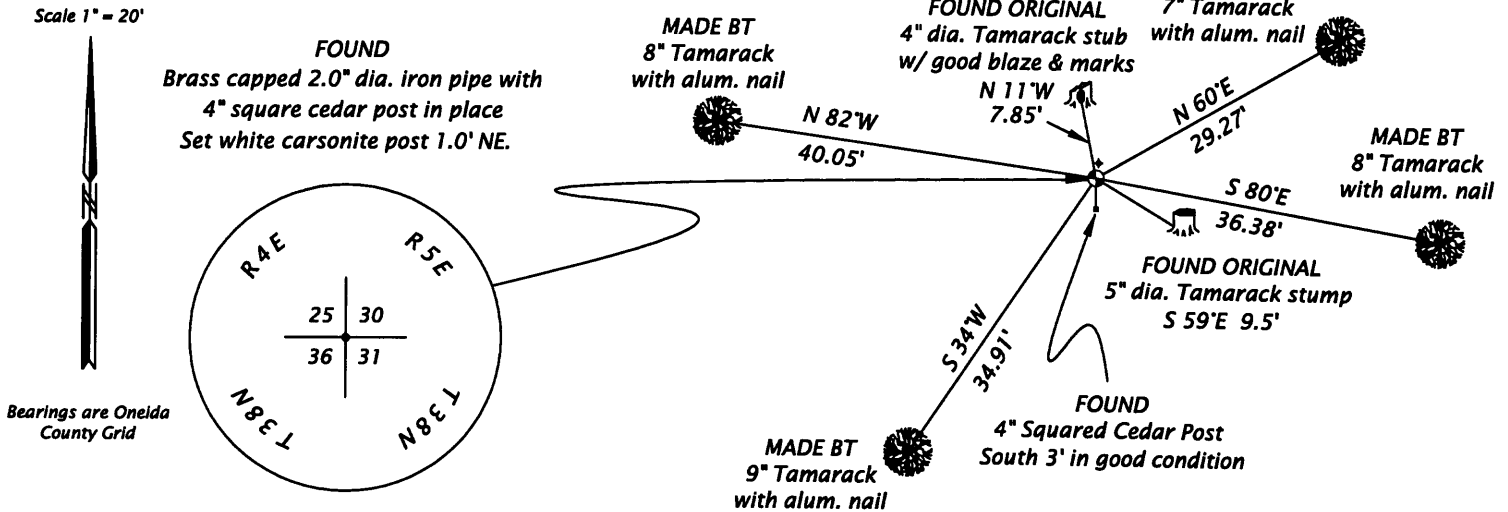
January 14th, 1935 - Hall, surveyor, per notes filed at the Oneida County Land Records Office in HALL Book No. 1 Page No. 213, recovers all original BT's and subsequently recovers original corner post. He drives 4.5' galvanized pipe for corner with new Tamarack post alongside, and makes a new BT: W. Pine 16" S5°W .832 ch (54.91').

April 26th, 1938 - V.M. Maine, Oneida County Surveyor, per notes filed at the Oneida County Land Records Office in MAINE Book No. 2 on Page 66, recovers all four original BT's standing dead, and a "well point for post".

1957 - Map prepared by W.H. Stuth on February 4, 1989 (Filed in NEPCO Book No. 2 Page No. 35 at the Oneida County Land Records office) indicates a corner BY OTHERS.

June 13, 2007 - James D. Rein, RLS No. 1234, Recover evidence of two original BT's, a 2" dia. iron pipe with 2.5" dia. brass cap up 14", also a 4" squared cedar post 3' south of monument in good condition. Monument and accessories as shown in plan.

(c)(d)(e) PLAN VIEW OF CORNER WITH TIES TO AT LEAST 4 WITNESS MONUMENTS. IF IN DISAGREEMENT WITH PREVIOUSLY ESTABLISHED CORNER, SHOW THE DISTANCE BETWEEN THE TWO CORNERS AND ALSO INDICATE THE TIES TO THE DISPUTED CORNER.



(i) I, JAMES D. REIN, REGISTERED LAND SURVEYOR NO. S-1234 HEREBY CERTIFY THAT THE CORNER LOCATION ON THIS RECORD WAS DETERMINED BY ME OR UNDER MY DIRECTION AND CONTROL AND THAT THIS U.S. PUBLIC LAND SURVEY MONUMENT RECORD IS CORRECT AND COMPLETE TO THE BEST OF MY KNOWLEDGE AND BELIEF.

[Handwritten Signature]
SIGNATURE

9/02/07
DATE 3804250000



INDEX NO. V-25