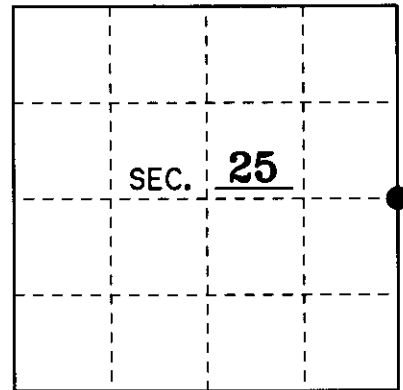


# U.S. PUBLIC LAND SURVEY MONUMENT RECORD

Note: This form is intended and designed to fulfill all requirements of Wisconsin Administrative Code, Chapter A-E 7.08 U.S. Public Land Monument Record (3)(a)(b)(c)(d)(e)(f)(g)(h)(i). An additional sheet may be added if necessary to conform with said requirements.

(a) CORNER LOCATION: East Line County or State Plane Coordinates  
East 1/4 Corner of Section 25 Northing \_\_\_\_\_  
 Township 38 North Easting \_\_\_\_\_  
 Range 4 East Datum Base \_\_\_\_\_  
 Township/City Minocqua County of ONEIDA



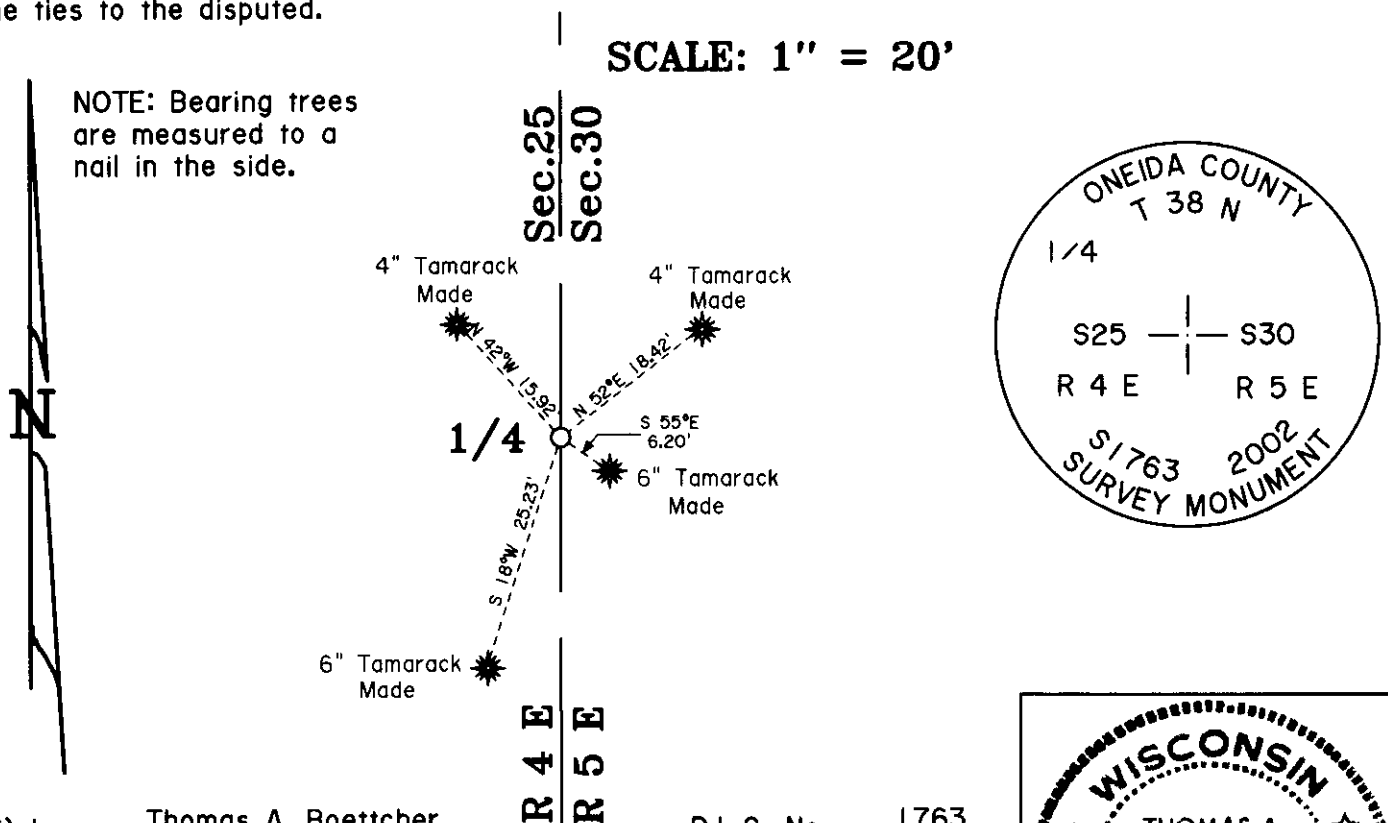
(b) HISTORY OF ORIGINAL CORNER ESTABLISHMENT Original B.T.'s  
 Original Surveyor: Alfred Millard 10" Tamarack S 32°E 50 Lks.  
 Date of Survey: September 1860 6" Spruce S 66°W 35 Lks.

(b)(f)(g)(h) Description of monument found at this corner and if it was accepted, state all evidence (material, testimonial, occupational, plats, records, other monuments) used as a basis for accepting. If not accepted or if nothing was found, state evidence used as basis for establishing location. If reestablished through lost corner proportionate methods, indicate all monuments, distances and directions used to establish. Indicate type of monument and sign post found or set.

1957: W.H. Stuth of Owens-Illinois shows a 1957 Hallsy ownership boundary survey of Section 30, T 38 N, R 5 E. He indicates a corner "by others".

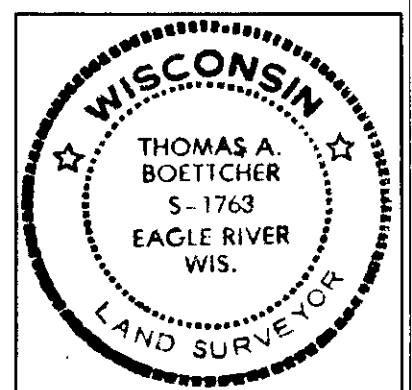
February 6, 2002: I, Thomas A. Boettcher, found a 4"x 4" scribed wood post in a large Tamarack marsh with a blue line running North and South from this location. I could not find any evidence of B.T.'s, so I made four new B.T.'s as shown below. I replaced the wood post with a 2-1/2" x 60" Oneida County aluminum monument stamped as shown below and set a plastic sign post 1' North of the corner. I left the monument extending 8" above the surface.

(c)(d)(e) Plan view of the corner with ties to at least 4 witness monuments. If in disagreement with previously established corner, show the distances between the two corners and also indicate the ties to the disputed.



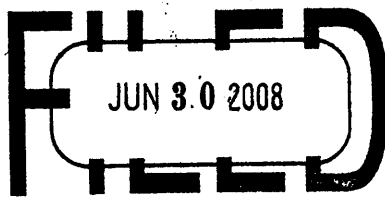
(i) I, Thomas A. Boettcher R.L.S. No. 1763  
 hereby certify that the corner location on this record was determined by me or under my direction and control and that this U.S. Public Land Survey Monument Record is correct and complete to the best of my knowledge and belief.

Signature *Thomas A. Boettcher* Date 2/6/2002



Index No. T-25

3804252000



At \_\_\_\_\_ O'Clock \_\_\_\_\_ M  
**THOMAS H. LEIGHTON**

**U.S. PUBLIC LAND SURVEY MONUMENT RECORD**

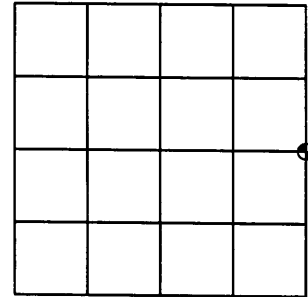
Note: This form is intended and designed to fulfill all requirements of the Wisconsin Administrative Code, Chapter A-E 7.08 U.S. Public Land Monument Record (3)(a)(b)(c)(d)(e)(f)(g)(h)(i). An additional sheet may be added if necessary to conform with said requirements.

**(a) CORNER LOCATION:**

East Quarter corner of Section 25  
Township 38 North  
Range 4 East  
Town of Minocqua  
County of Oneida

**O.C. COORDINATES**

North: 207344.3059  
East: 133801.8258  
Control Station: O.C. #295  
Latitude: 45°46'27.13998"N  
Longitude: 89°56'42.55785"W  
Datum: NAD 83 (1991) Method: RTK



**SECTION 25**

**(b) HISTORY OF ORIGINAL CORNER ESTABLISHMENT**

Original Surveyor: Alfred Millard  
Date of Survey: Commenced - August 1860  
Completed - September 1860

Original B.T.'S: Tamarack 10" S32°E 50 links  
Spruce 6" S66°W 35 links

**(f)(g)(h) DESCRIPTION OF MONUMENT FOUND AT THIS CORNER AND IF IT WAS ACCEPTED, STATE ALL EVIDENCE (MATERIAL, TESTIMONIAL, OCCUPATIONAL, PLATS, RECORDS, OTHER MONUMENTS) USED AS A BASIS FOR ESTABLISHING LOCATION. IF NOT ACCEPTED OF IF NOTHING WAS FOUND, STATE EVIDENCE USED AS BASIS FOR ESTABLISHING LOCATION. IF REESTABLISHED THROUGH LOST CORNER PROPORTIONATE METHODS, INDICATE ALL MONUMENTS, DISTANCES AND DIRECTIONS USED TO ESTABLISH. INDICATE TYPE OF MONUMENT AND SIGN POST FOUND OR SET.**

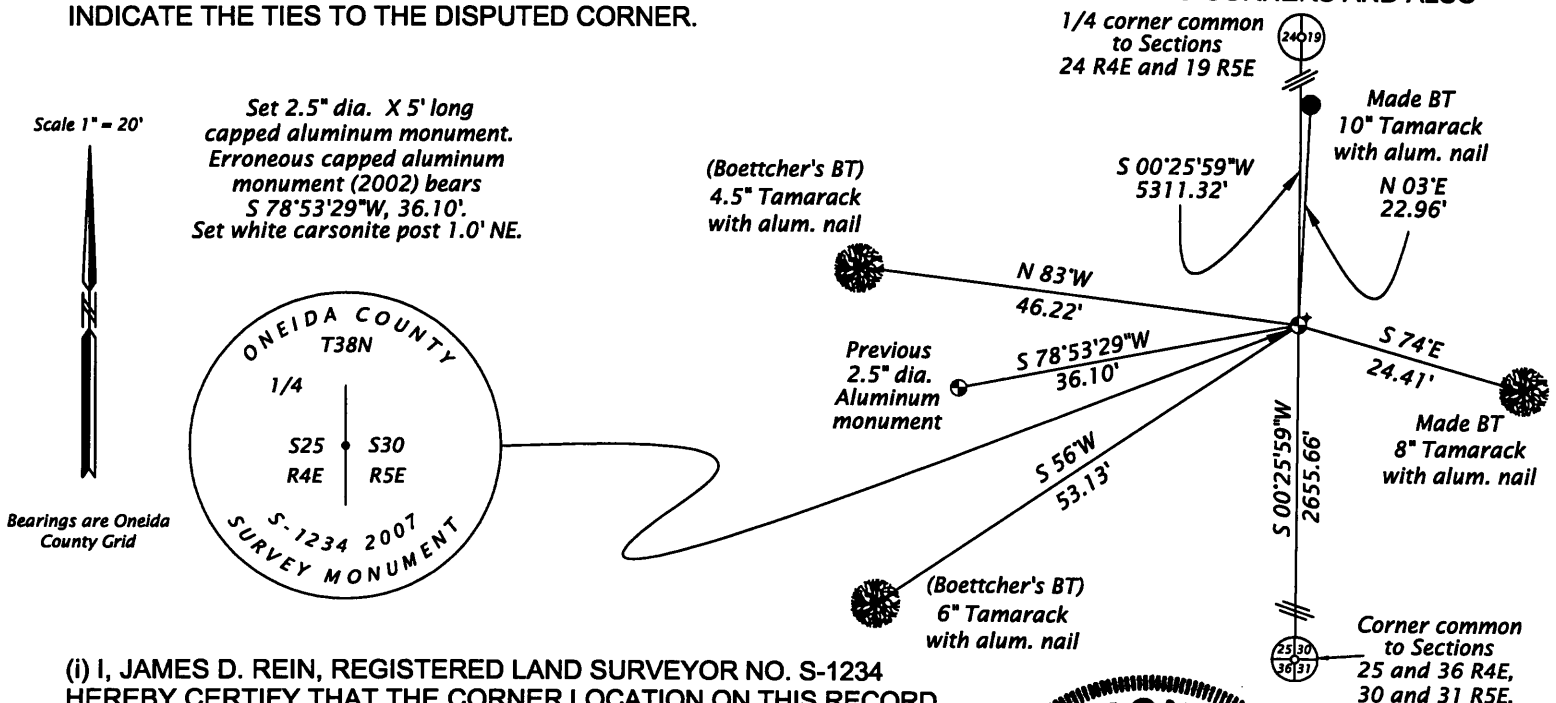
March 1934 - Hall, surveyor, per Page No. 31 in CCC book No. 3 filed at Oneida County Land Records Office, cruising in Sec. 25 - 38 - 4, "finds post only for NE cor. & E1/4?".

1957 - Map prepared by W.H. Stuth on February 4, 1989 (Filed in NEPCO Book No. 2 Page No. 35 at the Oneida County Land Records office) indicates a post.

2002 - Thomas A. Boettcher, RLS No. 1763, per USPLS Monument Record No. 3804252000 filed at Oneida County Land Records Office, found a scribed 4"x 4" wood post, and replaced with a 2.5" X 60" Oneida County Aluminum Monument.

June 13, 2007 - James D. Rein, RLS No. 1234, Recover and examine evidence established by Boettcher. Having conducted search for original evidence of corner and having found none, I monument the corner position by single proportionate measurement between the original corner to Sec. 25-30-31-36 and the original corner to Sec. 19 & 24. This position is harmonious with the remaining recovered original corners on the range line at the quarter corner between Sec. 7 & 12, and township corner 31-36-6-1. I do not accept the corner remonumented by Boettcher based upon the approximate staff compass survey by NEPCO in 1957, and by the uncertainty of the post found by Hall in 1934 as being original. Monument and accessories as shown in plan.

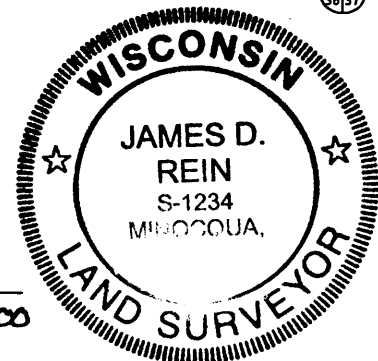
**(c)(d)(e) PLAN VIEW OF CORNER WITH TIES TO AT LEAST 4 WITNESS MONUMENTS. IF IN DISAGREEMENT WITH PREVIOUSLY ESTABLISHED CORNER, SHOW THE DISTANCE BETWEEN THE TWO CORNERS AND ALSO INDICATE THE TIES TO THE DISPUTED CORNER.**



**(i) I, JAMES D. REIN, REGISTERED LAND SURVEYOR NO. S-1234 HEREBY CERTIFY THAT THE CORNER LOCATION ON THIS RECORD WAS DETERMINED BY ME OR UNDER MY DIRECTION AND CONTROL AND THAT THIS U.S. PUBLIC LAND SURVEY MONUMENT RECORD IS CORRECT AND COMPLETE TO THE BEST OF MY KNOWLEDGE AND BELIEF.**

*[Signature]*  
SIGNATURE

9/02/07  
DATE 3804252000



INDEX NO. 7-25