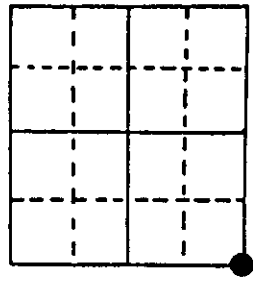


U.S. PUBLIC LAND SURVEY MONUMENT RECORD

Note: This form is intended and designed to fulfill all requirements of Wisconsin Administrative Code, Chapter A-E 5.02, U.S. Public Land Survey Monument Record (3) (a) (b) (c) (d) (e) (f) (g) (h) (i). An additional sheet may be added if necessary to conform with said requirements.

(a) Corner location: Township 38 North
 Range 4 East/West ^{XXXXX}
 Town/City/Village ^{XXXXXX} Minocqua
 County Oneida



Section 27

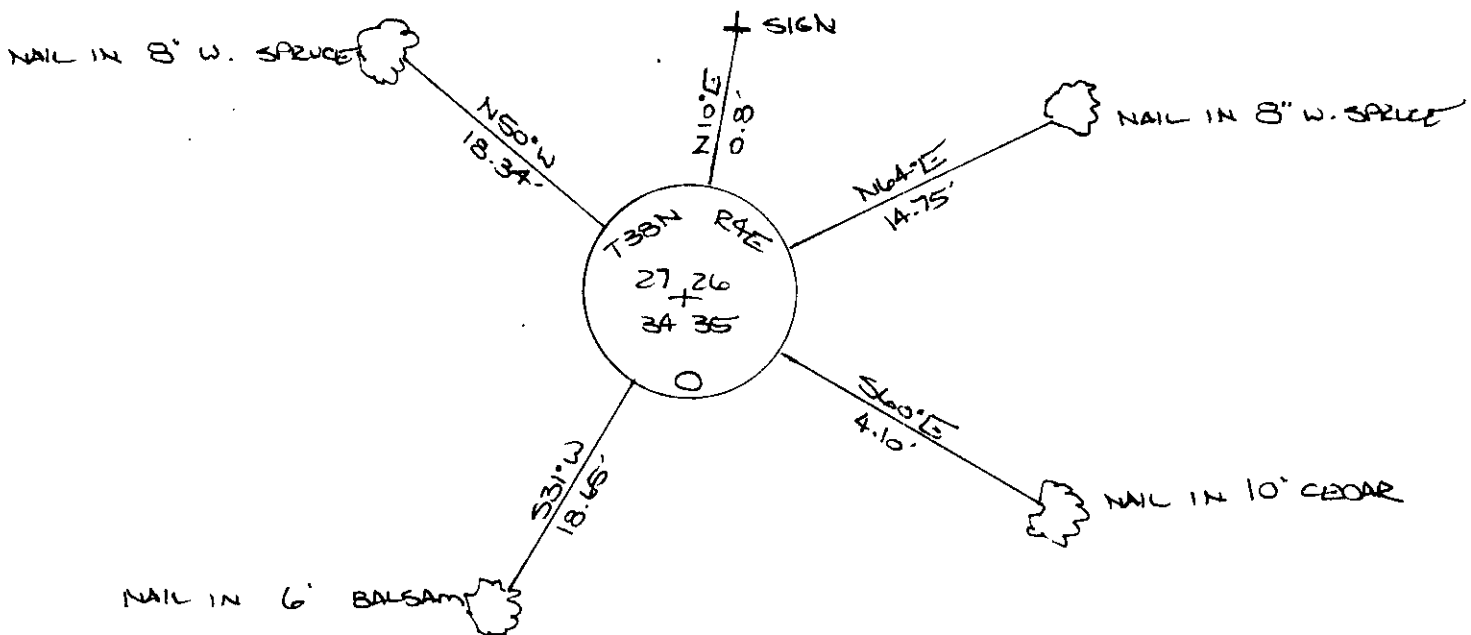
(b) (f) (g) (h) Description of monument found at this corner and if it was accepted, state all evidence (material, testimonial, occupational, plats, records, other monuments) used as a basis for accepting. If not accepted or if nothing was found, state evidence used as basis for establishing location. If reestablished through lost corner proportionate methods, indicate all monuments, distances and directions used to establish.

The original government survey was performed by Alexander Anderson in April & May, 1865. A wood post was set: Fir 8" S18W, 54 lks., Hemlock 9" N62W, 30 lks.

F. Wincentzen used this corner in his subdivision of section 34. Corner listed as 6"x6" wood post.

I found and accepted: Iron Pipe, 2" dia., 24" above ground with brass cap stamped as shown below. I established the following witnesses: (nail in trees) Balsam 6" S31W, 18.65'; W. Spruce 8" N50W, 18.34'; W. Spruce 8" N64E, 14.75'; set plastic survey marker sign N10E, 0.8'. Cedar 10" S60E, 4.10'.

(c) (d) (e) Plan view of corner with ties to at least 4 witness monuments. If in disagreement with previously established corner, show the distances between the two corners and also indicate the ties to the disputed corner.



(i) I, JEFFREY W. AUSTIN S-1885
 (type or print name) certify that the corner location on this record was determined by me or under my direction and control and that this U.S. Public Land Survey Monument Record is correct and complete to the best of my knowledge and belief.

Signature

Jeffrey W. Austin

Date

FEBRUARY 1, 1939



3804270000

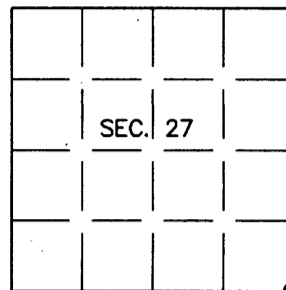
Index No. N-17

U.S. PUBLIC LAND SURVEY MONUMENT RECORD

Note: This form is intended and designed to fulfill all requirements of Wisconsin Administrative Code, Chapter A-E 7.08 U.S. Public Land Survey Monument Record (3)(a)(b)(c)(d)(e)(f)(g)(h)(i). An additional sheet may be added if necessary to conform with said requirements.

(a) CORNER LOCATION:
 Cor. of Secs. 26, 27, 34 & 35
 Township 38 North
 Range 4 East of the 4th P.M.
 Town of Minocqua

Plane Coordinates
 X:
 Y:
 Datum:
 County of Oneida



(b) HISTORY OF ORIGINAL CORNER ESTABLISHMENT

Original Surveyor: Alexander Anderson
 Date of Survey: Commenced April, 1865
 Completed May, 1865

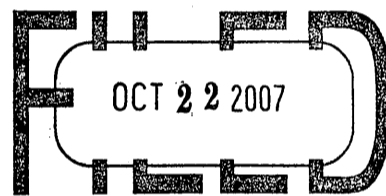
Original Accessories:
 Fir 8" S18°W, 54 lks.
 Hemlock 9" N62°W, 30 lks.

(b)(f)(g)(h) Description of monument found at this corner and if it was accepted, state all evidence (material, testimonial, occupational, plats, records, other monuments) used as a basis for accepting. If not accepted or if nothing was found, state evidence used as basis for establishing location. If re-established through lost corner proportionate methods, indicate all monuments, distances and directions used to establish. Indicate type of monument and sign post found or set.

1 February 1989: USPLS Monument Record prepared by Jeffrey W. Austin and filed in the office of the Oneida County Register of Deeds. Found 2 ins. diam. iron pipe with brass cap based on previously perpetuated location.

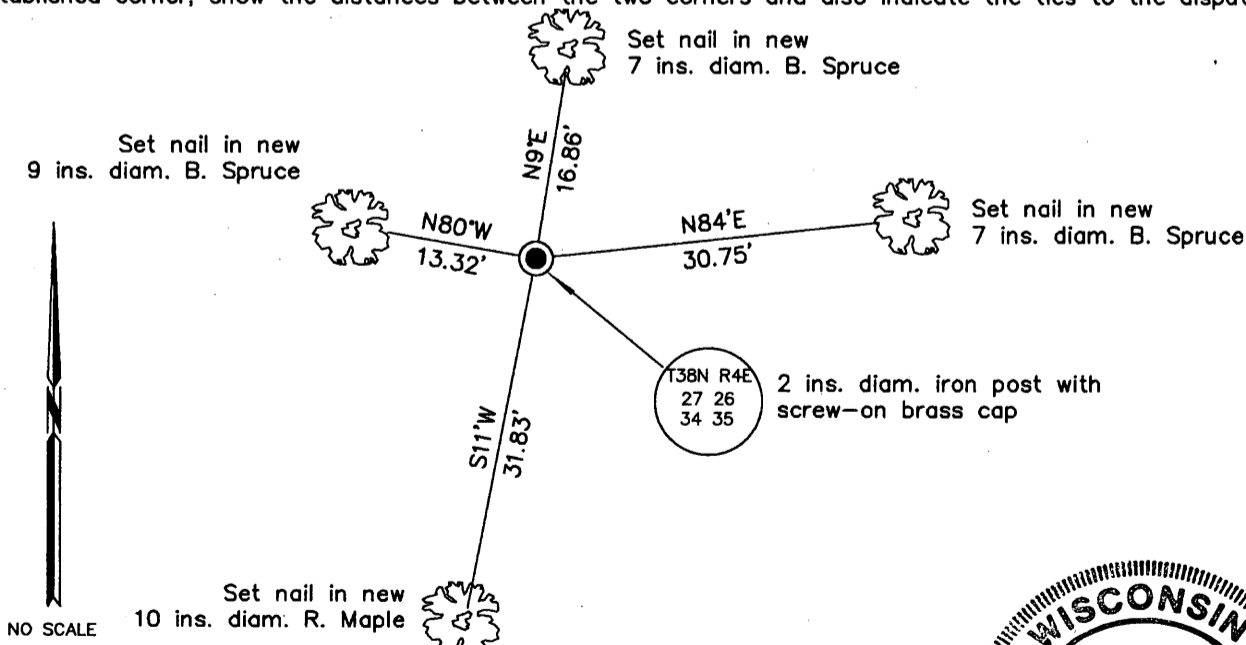
26 April 2006: I found and accepted a 2 ins. diam. iron post with screw-on brass cap projecting 28 ins. above the bog surface. All of my previous bearing trees are either standing dead or wind-thrown. I established accessories as shown below and found a white plastic sign post bearing North, 1 ft. dist.

REGISTER OF DEEDS OFFICE
 ONEIDA COUNTY, WIS.

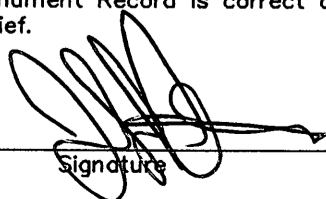


At _____ O'Clock _____ M
THOMAS H. LEIGHTON
 REGISTER OF DEEDS

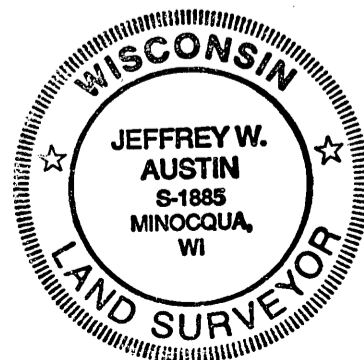
(c)(d)(e) Plan view of corner with ties to at least 4 witness monuments. If in disagreement with previously established corner, show the distances between the two corners and also indicate the ties to the disputed.



(i) I, Jeffrey W. Austin, Registered Land Surveyor No. S-1885, hereby certify upon honor that the corner location on this record was determined by me or under my direction and control and that this U.S. Public Land Survey Monument Record is correct and complete to the best of my knowledge and belief.


 Signature

OCT 8, 2007
 Date



INDEX NO. V-17 (3804270000)