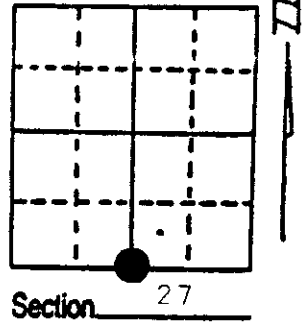


U.S. PUBLIC LAND SURVEY MONUMENT RECORD

Note: This form is intended and designed to fulfill all requirements of Wisconsin Administrative Code, Chapter A-E 7.08 U.S. Public Land Survey Monument Record (3) (a) (b) (c) (d) (e) (f) (g) (h) (i). An additional sheet may be added if necessary to conform with said requirements.

(a) Corner location: Township 38 North
 Range 4 East/West

Town/City/Village MINOCOQUA
 County ONEIDA



(b) (f) (g) (h) Description of monument found at this corner and if it was accepted, state all evidence (material, testimonial, occupational, plats, records, other monuments) used as a basis for accepting. If not accepted or if nothing was found, state evidence used as basis for establishing location. If reestablished through lost corner proportionate methods, indicate all monuments, distances and directions used to establish. Indicate type of monument found or set and sign post.

The original government survey was performed by Alexander Anderson in April & May, 1865. A wood post was set: Cedar 7" N48E, 13 lks., Tamarack 12" S63W, 18 lks.

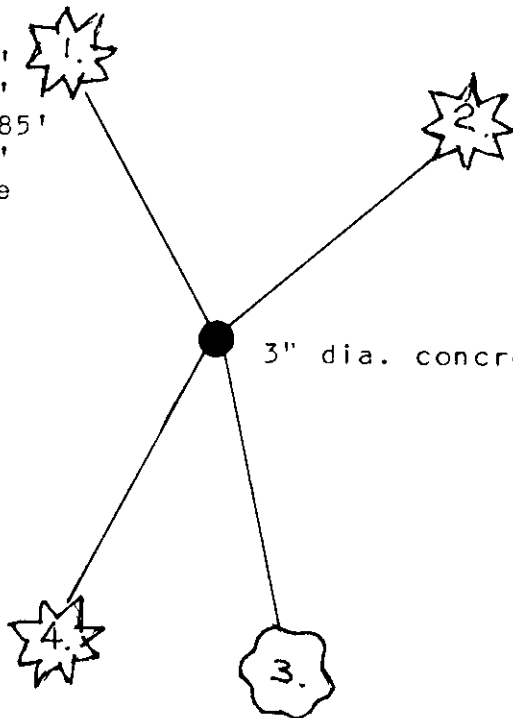
F. Wincentzen used this corner location in his subdivision of section 34: 4'x4" wood post: Cedar 6" N29W, 31.4'.

I found and was unable to remove: iron pipe, 3" dia., 30" above ground witnessed by the following BT: Cedar 11" N29W, 31.39'.

I accepted this position and witnessed the corner as shown in the diagram below.

(c) (d) (e) Plan view of corner with ties to at least 4 witness monuments. If in disagreement with previously established corner, show the distances between the two corners and also indicate the ties to the disputed corner.

1. Cedar 11" N29W, 31.39'
 2. Balsam 5' N50E, 19.88'
 3. W. Birch 9' S12E, 27.85'
 4. Balsam 5" S28W, 19.21'
- distances to nail in side of tree.



3" dia. concrete filled iron pipe

REGISTER OF DEEDS OFFICE
 ONEIDA COUNTY, WIS.
FILED
 JUL 17 1989
 At _____ O'Clock _____ M
THOMAS H. LEIGHTON
 REGISTER OF DEEDS

(i) I, JEFFREY W. AUSTIN S-1885

(type or print name) certify that the corner location on this record was determined by me or under my direction and control and that this U.S. Public Land Survey Monument Record is correct and complete to the best of my knowledge and belief.

Signature [Handwritten Signature] Date MAY 10, 1989



Index No. V-15

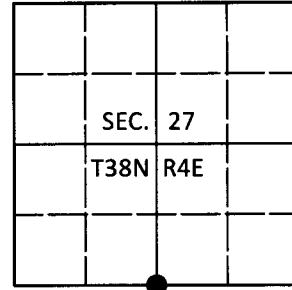
3804270020

U.S. PUBLIC LAND SURVEY MONUMENT RECORD

Note: This form is intended and designed to fulfill all requirements of Wisconsin Administrative Code, Chapter A-E 7.08 U.S. Public Land Survey Monument Record (3)(a-i).

(a) CORNER LOCATION
 1/4 Cor. of Secs. 27 & 34
 Township 38 North
 Range 4 East of the 4th P.M.
 Town of Minocqua
 County of Oneida

WISCRS - Oneida County
 N: 204,374.53 USft
 E: 120,941.58 USft
 Datum: NAD 83(2011)
 GNSS Method: RTN - Direct
 GNSS Control: WISCORS VRS



(b) HISTORY OF ORIGINAL CORNER ESTABLISHMENT

Original Surveyor: _____ Original Accessories: _____
 Date of Survey Commenced: _____ See previous USPLS Monument Record
 Completed: _____

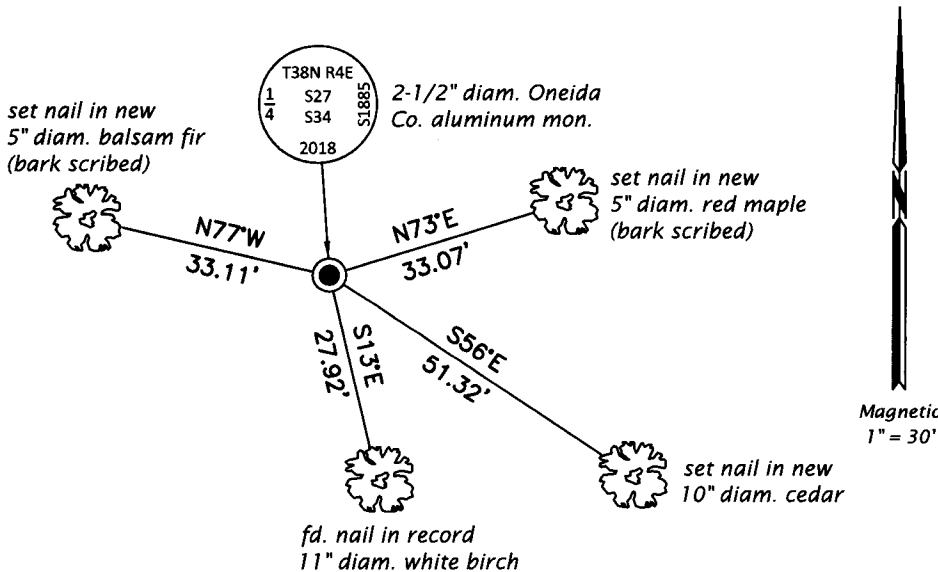
(b)(f)(g)(h) Description of monument found at this corner and if it was accepted, state all evidence (material, testimonial, occupational, plats, records, other monuments) used as a basis for accepting. If not accepted or if nothing was found, state evidence used as basis for establishing location. If re-established through lost corner proportionate methods, indicate all monuments, distances and directions used to establish. Indicate type of monument and sign post found or set.

This is a perpetuation of a previous USPLS Monument Record by Jeffrey W. Austin, RLS dated May 10, 1989 and filed in the office of the Oneida County Register of Deeds. A complete history of the corner can be found on the previous monument record. I accept the previous location as a true and faithful perpetuation or reestablishment of the original corner location and further perpetuate it as follows.

July 27, 2018: I found and accepted the record monument, a 3-1/4" diam., 66" long concrete-filled iron pipe. In place of the pipe, I set a 2-1/2" diam., 60" long aluminum pipe with a 3-1/4" diam. Oneida Co. aluminum cap projecting 3" above the bog surface. The corner is on the West edge of a N-S trail. Record bearing trees #1 and #4 stand dead, tree #2 is a stump. I found or established accessories as shown below. I set a white vinyl sign post bearing East, 0.6 ft.

The coordinate value shown has been verified by at least one of the following methods: 1) comparison to a previously GPS determined published value; 2) the value is the average of two or more GPS observations at a markedly different time; 3) one or more distances were measured back to the GPS observed corner from temporary GPS observed offset locations.

(c)(d)(e) Plan view of corner with ties to at least 4 witness monuments. If in disagreement with previously established corner, show the distances between the two corners and also indicate the ties to the disputed.



REGISTER OF DEEDS OFFICE
 ONEIDA COUNTY
 FILED

AUG 16 2018

KYLE J. FRANSON
 REGISTER OF DEEDS

(i) I, Jeffrey W. Austin, Professional Land Surveyor No. S-1885, hereby certify that the corner location on this record was determined by me or under my direction and control and that this U.S. Public Land Survey Monument Record is correct and complete to the best of my knowledge and belief.

 Signature Date
 AUG. 8, 2018