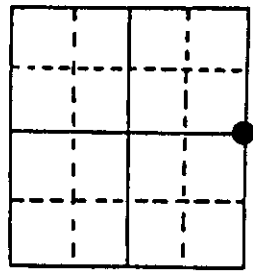


U.S. PUBLIC LAND SURVEY MONUMENT RECORD

Note: This form is intended and designed to fulfill all requirements of Wisconsin Administrative Code, Chapter A-E 5.02, U.S. Public Land Survey Monument Record (3) (a) (b) (c) (d) (e) (f) (g) (h) (i). An additional sheet may be added if necessary to conform with said requirements.

(a) Corner location: Township 38 North
 Range 4 East/West
 Town/City/Village Minocqua
 County Oneida

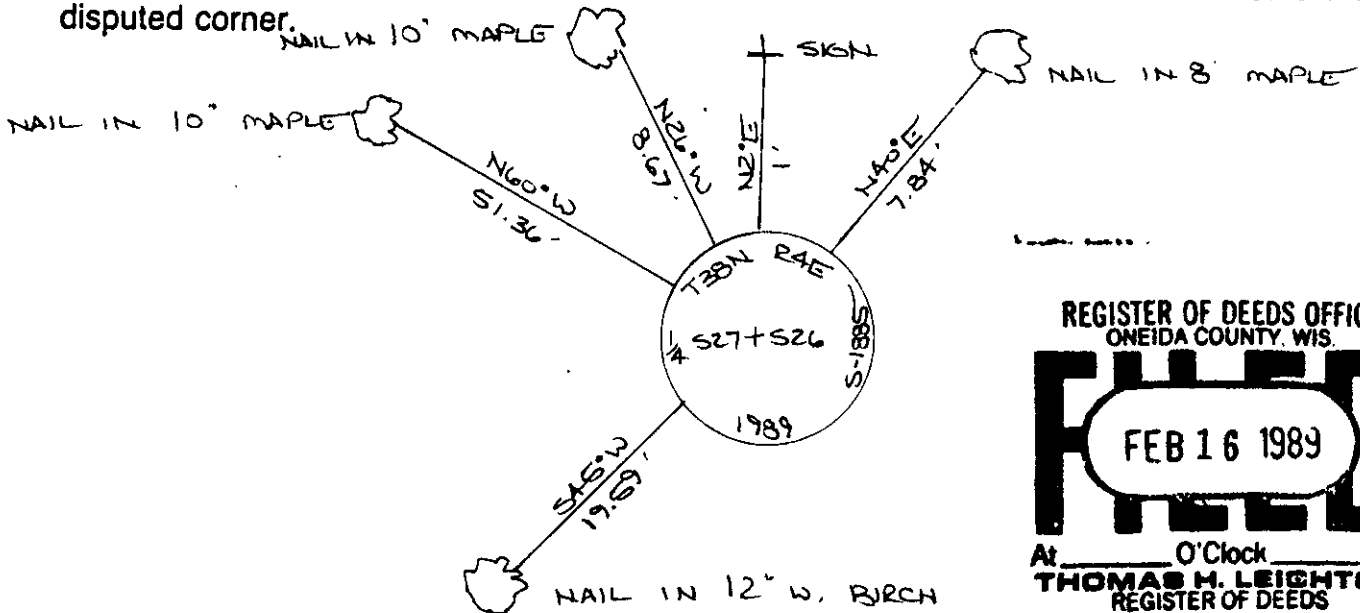


(b) (f) (g) (h) Description of monument found at this corner and if it was accepted, state all evidence (material, testimonial, occupational, plats, records, other monuments) used as a basis for accepting. If not accepted or if nothing was found, state evidence used as basis for establishing location. If reestablished through lost corner proportionate methods, indicate all monuments, distances and directions used to establish.

The original Government Survey was performed by Alexander Anderson in April & May, 1865. A wood post was set: Tamarack 7" S30W, 24 lks., Tamarack 8" S83E, 13 lks.

After determining a search area from our traverse information, I searched extensively and found no marks of the original or any other surveyor. I therefore established at proportionate measure: Aluminum Pipe, 30" long, 2 1/2" dia., 22" in the ground with aluminum cap stamped as shown below. The NE corner of the section bears: N3 05'59"W, 2658.37'. The SE corner of the section bears: S3 05'59"E, 2658.37'. (see U.S.P.L.S. mon. records). I established the following witnesses: (nail in trees) Maple 10" N60W, 51.36'; Maple 10" N26W, 8.67'; Maple 8' N40E, 7.84'; W. Birch 12' S45W, 19.59'; set plastic survey marker sign N2E, 1'.

(c) (d) (e) Plan view of corner with ties to at least 4 witness monuments. If in disagreement with previously established corner, show the distances between the two corners and also indicate the ties to the disputed corner.



REGISTER OF DEEDS OFFICE
 ONEIDA COUNTY, WIS.
FILED
 FEB 16 1989
 At _____ O'Clock _____ M
THOMAS H. LEIGHTON
 REGISTER OF DEEDS

(i) I, JEFFREY W. AUSTIN S-1885
 (type or print name) certify that the corner location on this record was determined by me or under my direction and control and that this U.S. Public Land Survey Monument Record is correct and complete to the best of my knowledge and belief.

Jeffrey W. Austin Signature FEBRUARY 1, 1989 Date



3804272000

Index No. T-17