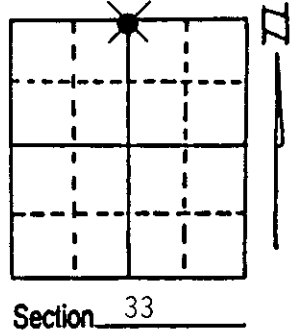


U.S. PUBLIC LAND SURVEY MONUMENT RECORD

Note: This form is intended and designed to fulfill all requirements of Wisconsin Administrative Code, Chapter A-E 7.08 U.S. Public Land Survey Monument Record (3) (a) (b) (c) (d) (e) (f) (g) (h) (i). An additional sheet may be added if necessary to conform with said requirements.

(a) Corner location: Township 38 North
 Range 4 East/West
 Town/City/Village MINOCQUA
 County ONEIDA

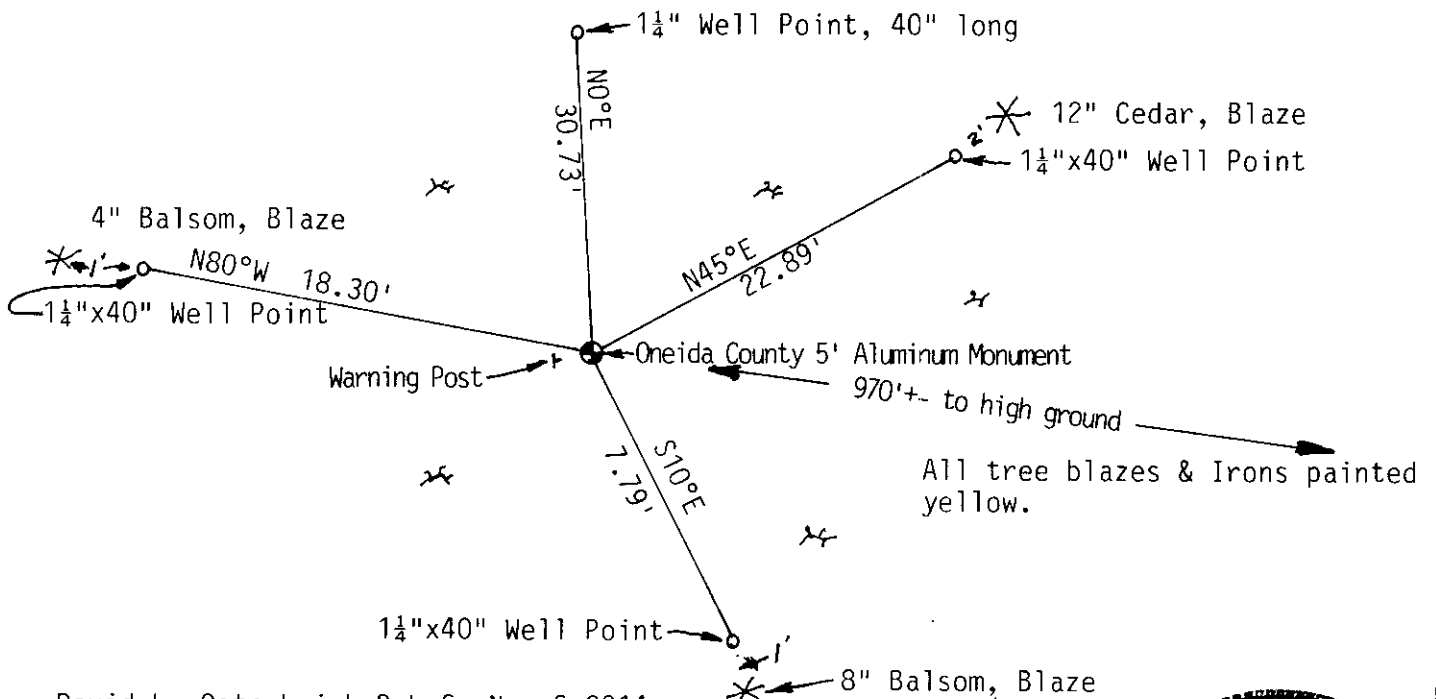


(b) (f) (g) (h) Description of monument found at this corner and if it was accepted, state all evidence (material, testimonial, occupational, plats, records, other monuments) used as a basis for accepting. If not accepted or if nothing was found, state evidence used as basis for establishing location. If reestablished through lost corner proportionate methods, indicate all monuments, distances and directions used to establish. Indicate type of monument found or set and sign post.

Original Government Survey performed by Alexander Anderson, April & May, 1865. Post set. Cedar, 10", N8°E, 11 Links; Do (?), 10", N28°W, 13 Links.

In 1961, W.H. Stuth working for NEPCO, did not find the North 1/4 Corner. He set a 40 Corner (NE Cor. of NW 1/4, NW 1/4) and a meander corner near Pier Lake. I did not find the 40 corner. I found the NEPCO Plaque for the meander corner, but could not find the Iron. Using Meander Corners set in Section 27-38-4, and bearings, I produced the NE Corner of Section 33 in Pier Lake. I straight lined and split the distance. Traversed out into swamp. Found no evidence of corner location. Corner falls in thick brushy area. Many trees are tipped over from wind storm. Set 5 foot Oneida County Aluminum Monument. Tied out, painted ties yellow. Talking with area resident, she said land owners do not know where this corner is. They had looked for it to determine a property line, but did not find it.

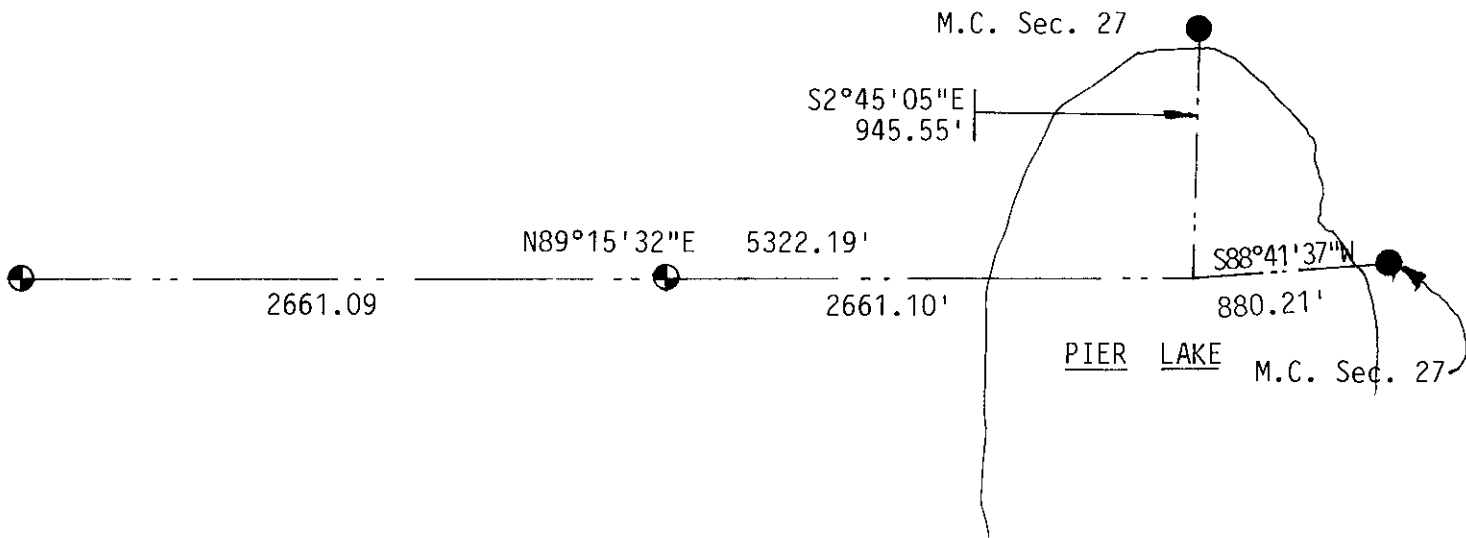
(c) (d) (e) Plan view of corner with ties to at least 4 witness monuments. If in disagreement with previously established corner, show the distances between the two corners and also indicate the ties to the disputed corner.



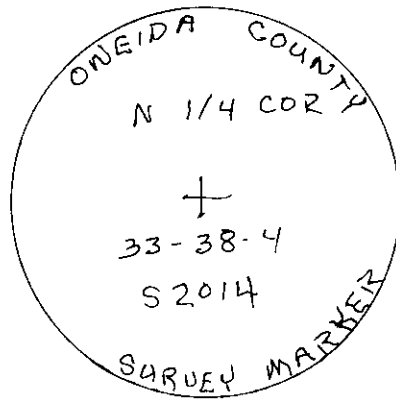
(i) I, David L. Osterbrink R.L.S. No. S-2014
 (type or print name) certify that the corner location on this record was determined by me or under my direction and control and that this U.S. Public Land Survey Monument Record is correct and complete to the best of my knowledge and belief.

David L. Osterbrink Signature 9-21-94 Date





Used Section breakdown of Section 27-38-4 by J.W. Austin, 1-16-89 to determine NE Corner of Section 33. Straight lined between NW & NE Corners of Section 33, and split distance. Set Monument. Looked for 2 irons set on this line, could not find them.



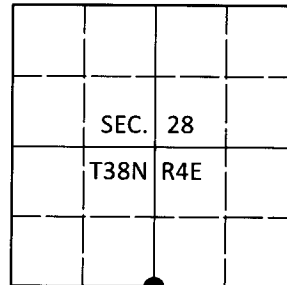
REGISTER OF DEEDS OFFICE
 ONEIDA COUNTY WIS
FILED
 OCT 19 1994
 At _____ O'Clock _____ M
THOMAS H. LEIGHTON
 REGISTER OF DEEDS

U.S. PUBLIC LAND SURVEY MONUMENT RECORD

Note: This form is intended and designed to fulfill all requirements of Wisconsin Administrative Code, Chapter A-E 7.08 U.S. Public Land Survey Monument Record (3)(a-i).

(a) CORNER LOCATION
 1/4 Cor. of Secs. 28 & 33
 Township 38 North
 Range 4 East of the 4th P.M.
 Town of Minocqua
 County of Oneida

WISCORS - Oneida County
 N: 204,280.59 USft
 E: 115,627.63 USft
 Datum: NAD 83(2011)
 GNSS Method: RTN - Direct
 GNSS Control: WISCORS VRS



(b) HISTORY OF ORIGINAL CORNER ESTABLISHMENT

Original Surveyor: _____ Original Accessories: _____
 Date of Survey Commenced: _____ See previous monument record(s)
 Completed: _____

(b)(f)(g)(h) Description of monument found at this corner and if it was accepted, state all evidence (material, testimonial, occupational, plats, records, other monuments) used as a basis for accepting. If not accepted or if nothing was found, state evidence used as basis for establishing location. If re-established through lost corner proportionate methods, indicate all monuments, distances and directions used to establish. Indicate type of monument and sign post found or set.

This is a perpetuation of the following monument record(s) that comprise a complete history of the corner:

Sep. 21, 1994: USPLS Monument Record No. 3804280020 by David L. Osterbrink, PLS

May 6, 2020: I found and accepted the record monument, a 2.4" diam. aluminum pipe with a 3.3" diam. Oneida Co. aluminum cap projecting 3" above the bog surface. The record cedar and 4" fir are down. I found or established accessories as shown below. I found a white vinyl sign post bearing West, 0.7 ft.

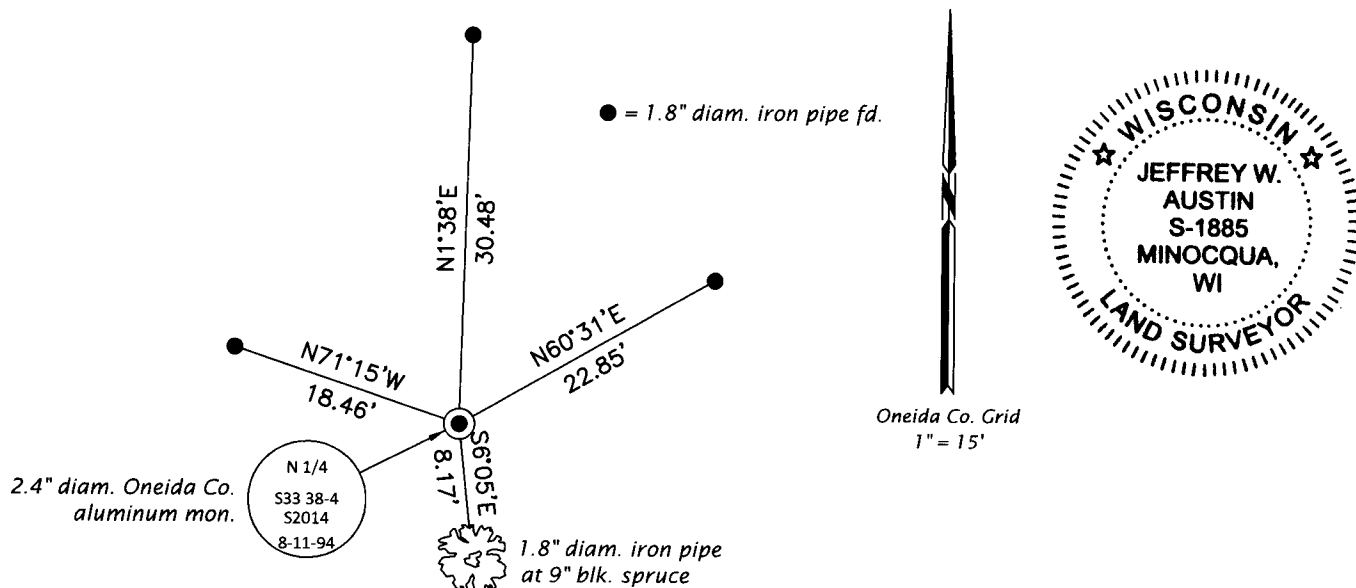
The coordinate value shown has been verified by at least one of the following methods: 1) comparison to a previously GPS determined published value; 2) the value is the average of two or more GPS observations at a markedly different time; 3) one or more distances were measured back to the GPS observed corner from temporary GPS observed offset locations.

REGISTER OF DEEDS OFFICE
 ONEIDA COUNTY
 FILED

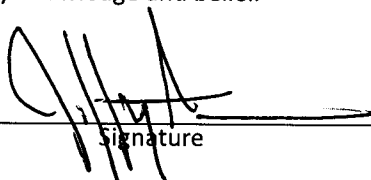
JUN 26 2020

KYLE J. FRANSON
 REGISTER OF DEEDS

(c)(d)(e) Plan view of corner with ties to at least 4 witness monuments. If in disagreement with previously established corner, show the distances between the two corners and also indicate the ties to the disputed.



(i) I, Jeffrey W. Austin, Professional Land Surveyor No. S-1885, hereby certify that the corner location on this record was determined by me or under my direction and control and that this U.S. Public Land Survey Monument Record is correct and complete to the best of my knowledge and belief.

 _____
 Signature Date: JUNE 5, 2020