

U.S. PUBLIC LAND SURVEY MONUMENT RECORD

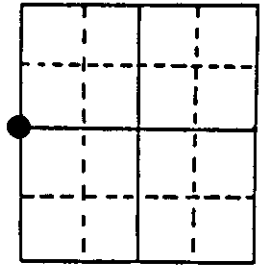
Note: This form is intended and designed to fulfill all requirements of Wisconsin Administrative Code, Chapter A-E 5.02, U.S. Public Land Survey Monument Record (3) (a) (b) (c) (d) (e) (f) (g) (h) (i). An additional sheet may be added if necessary to conform with said requirements.

(a) Corner location: Township 38 North

Range 4 East/West ^{XXXX}

Town/City/Village Minocqua

County Oneida



Section 27

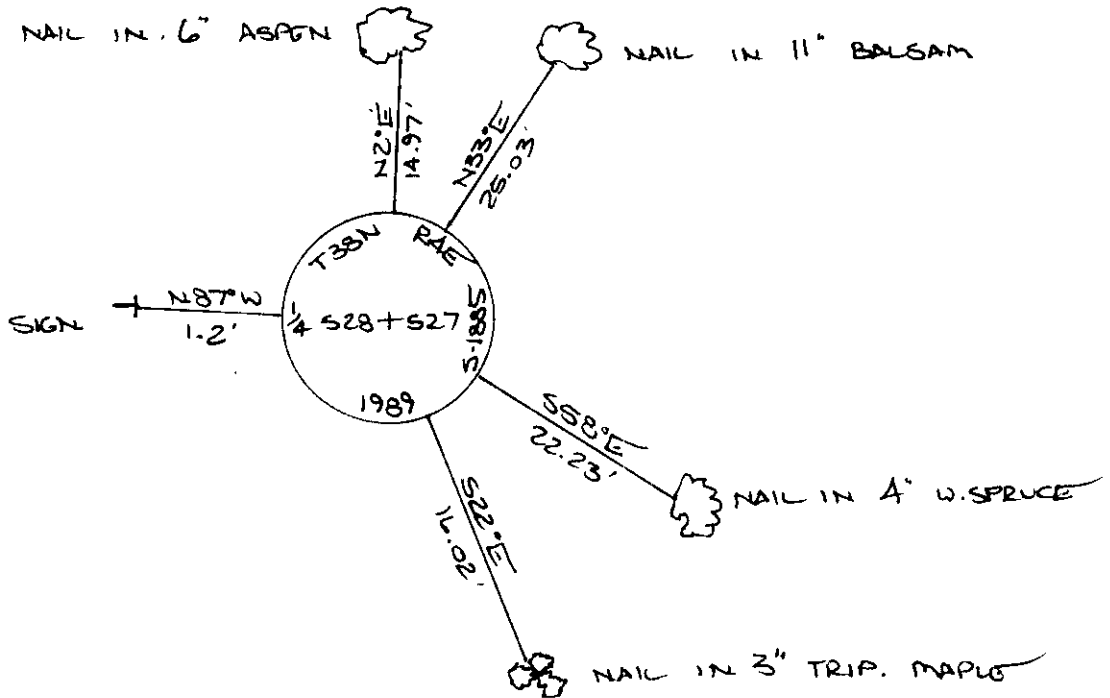
(b) (f) (g) (h) Description of monument found at this corner and if it was accepted, state all evidence (material, testimonial, occupational, plats, records, other monuments) used as a basis for accepting. If not accepted or if nothing was found, state evidence used as basis for establishing location. If reestablished through lost corner proportionate methods, indicate all monuments, distances and directions used to establish.

The original Government Survey was performed by Alexander Anderson in April & May, 1865. A wood post was set: Tamarack 6' S51W 61ks., Hemlock 10' N39E, 20 lks.

This corner location is shown as being monumented by an "iron pipe" on a Survey Map by Northwoods Surveyors, dated October, 1961, revised November, 1961.

I found and accepted: Iron Pipe, 30" long, 2" dia., 20" in the ground. I replaced this monument with: Aluminum Pipe, 30" long, 2½" dia., 28" in the ground with aluminum cap stamped as shown below. I established the following witnesses: (nail in trees) Aspen 6" N2E, 14.97'; Balsam 11' N33E, 25.03'; W. Spruce 4" S58E, 22.23'; Triple Maple 3" S22E, 16.02'; set survey marker sign N87W, 1.2'.

(c) (d) (e) Plan view of corner with ties to at least 4 witness monuments. If in disagreement with previously established corner, show the distances between the two corners and also indicate the ties to the disputed corner.



(i) I, JEFFREY W. AUSTIN S-1885
 (type or print name) certify that the corner location on this record was determined by me or under my direction and control and that this U.S. Public Land Survey Monument Record is correct and complete to the best of my knowledge and belief.

[Signature] FEBRUARY 1, 1989
 Signature Date



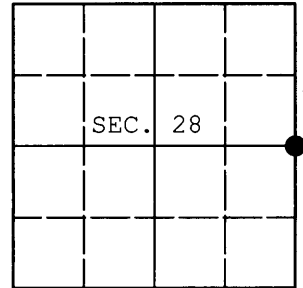
3804282000

Index No. T-13

U.S. PUBLIC LAND SURVEY MONUMENT RECORD

Note: This form is intended and designed to fulfill all requirements of Wisconsin Administrative Code, Chapter A-E 7.08 U.S. Public Land Survey Monument Record (3) (a) (b) (c) (d) (e) (f) (g) (h) (i). An additional sheet may be added if necessary to conform with said requirements.

(a) CORNER LOCATION: WISCRS - Oneida County
 1/4 Cor. of Secs. 27 & 28 N: 206,953.26 USft
 Township 38 North E: 118,164.87 USft
 Range 4 East of the 4th P.M. Datum: NAD 1983(2011)
 Town of Minocqua County of Oneida



(b) HISTORY OF ORIGINAL CORNER ESTABLISHMENT

Original Surveyor: Alexander Anderson Original Accessories:
 Date of Survey: Commenced: April 26, 1865 Tamarack 6" S51°W, 6 lks.
 Completed: May 8, 1865 Hemlock 10" N39°E, 20 lks.

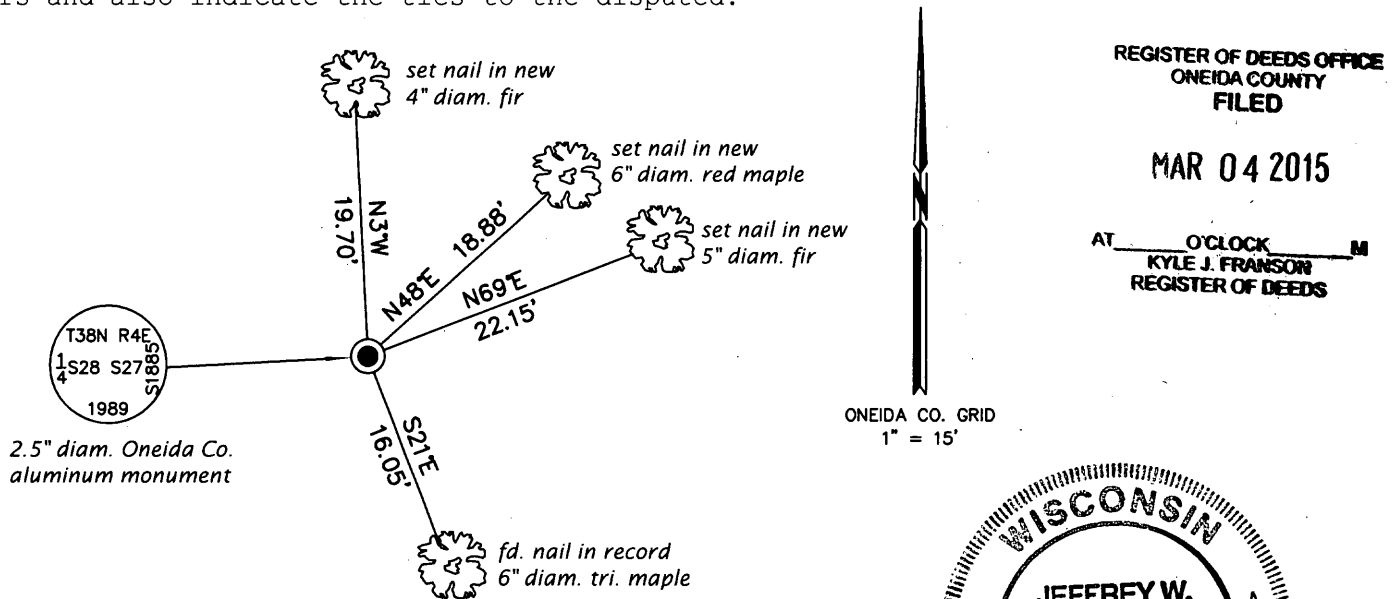
(b) (f) (g) (h) Description of monument found at this corner and if it was accepted, state all evidence (material, testimonial, occupational, plats, records, other monuments) used as a basis for accepting. If not accepted or if nothing was found, state evidence used as basis for establishing location. If re-established through lost corner proportionate methods, indicate all monuments, distances and directions used to establish. Indicate type of monument and sign post found or set.

NOTE: This is a perpetuation of a previous USPLS Monument Record by Jeffrey W. Austin, RLS dated February 1, 1989 and filed in the office of the Oneida County Register of Deeds. A complete history of the corner can be found on the previous monument record. I accept the previous location as a true and faithful perpetuation or reestablishment of the original corner location and further perpetuate it as follows.

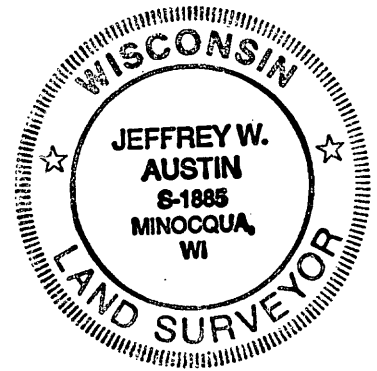
January 28, 2015: I found and accepted the record monument, a 2.5" diam. aluminum pipe with 3.25" diam. Oneida Co. aluminum cap projecting 12" above the ground surface. All but one of the record bearing trees are gone. I found or established accessories as shown below and found a white plastic sign post bearing Southeast, 0.5 ft. dist.

The coordinates shown were derived from a direct RTN GPS observation referenced to the WISCORS network.

(c) (d) (e) Plan view of corner with ties to at least 4 witness monuments. If in disagreement with previously established corner, show the distances between the two corners and also indicate the ties to the disputed.



(i) I, Jeffrey W. Austin, Registered Land Surveyor No. S-1885, hereby certify that the corner location on this record was determined by me or under my direction and control and that this U.S. Public Land Survey Monument Record is correct and complete to the best of my knowledge and belief.



[Handwritten Signature]

MAR 1, 2015

Signature

Date