

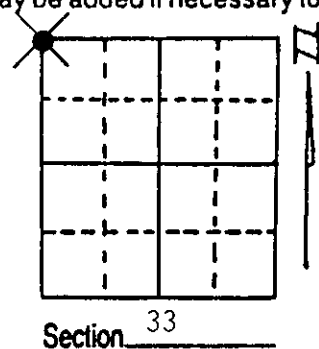
U.S. PUBLIC LAND SURVEY MONUMENT RECORD

Note: This form is intended and designed to fulfill all requirements of Wisconsin Administrative Code, Chapter A-E 7.08 U.S. Public Land Survey Monument Record (3) (a) (b) (c) (d) (e) (f) (g) (h) (i). An additional sheet may be added if necessary to conform with said requirements.

(a) Corner location: Township 38 North
 Range 4 East/West

Town/City/Village MINOCQUA

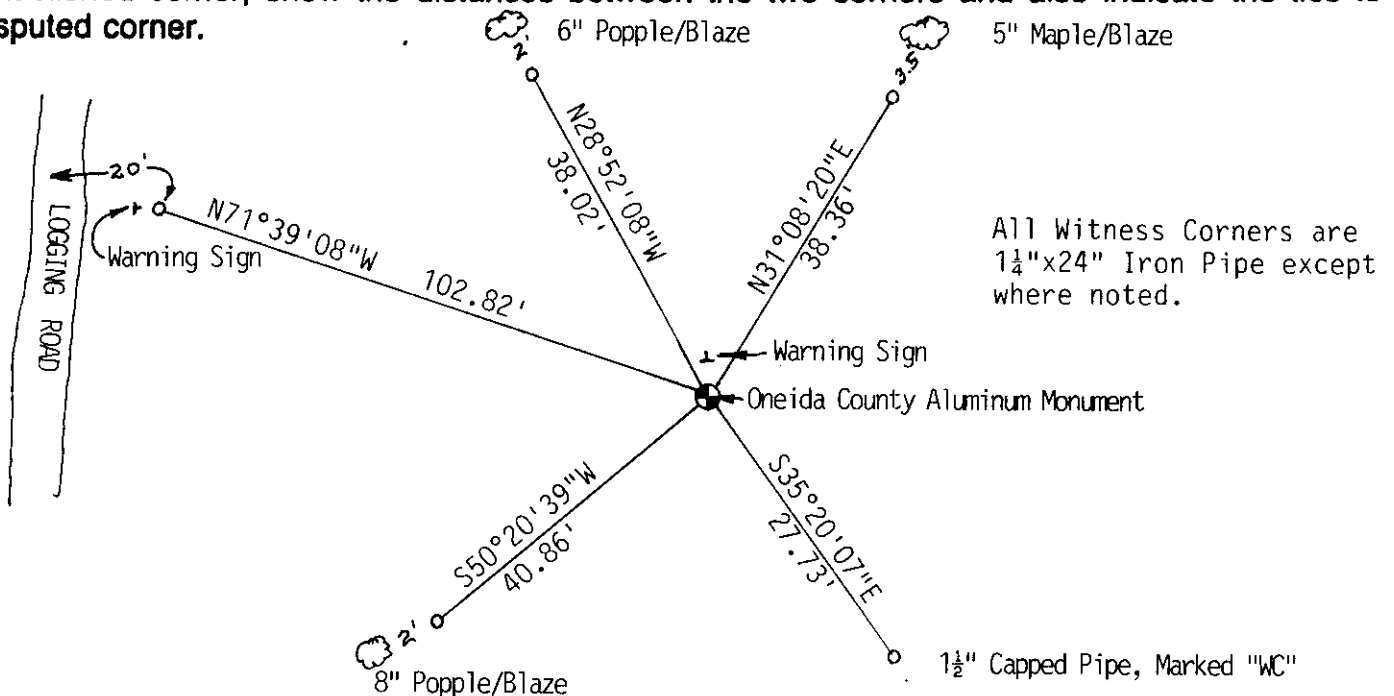
County ONEIDA



(b) (f) (g) (h) Description of monument found at this corner and if it was accepted, state all evidence (material, testimonial, occupational, plats, records, other monuments) used as a basis for accepting. If not accepted or if nothing was found, state evidence used as basis for establishing location. If reestablished through lost corner proportionate methods, indicate all monuments, distances and directions used to establish. Indicate type of monument found or set and sign post.

Original Government Survey performed by Alexander Anderson April & May, 1865. Post set Sugar 10" S44°E, 24 Links; Do (?) 12" N45°E, 29 Links
 In 1961, W.H. Stuth found a 1½" Iron Pipe with cap.
 Corner was marked with white cross for 1989 Aerial Photo
 On August 9, 1994, I found a 1½" Iron Pipe with cap, marked as Section Corner. There was also a rotted off 4" square Cedar post, with Section numbers scribed on it, similar to post at other corners. Pipe was 18" above surface, with rocks piled around pipe. There were remnants of the white plastic cross from the aerial photo. Searched area for other evidence, found none. Dimensions to other corners were favorable, held as corner. Removed 1½" pipe, and set Oneida County Monument, stamped it. Set out ties, used 1½" original corner as witness tie after stamping cap with "WC"
 Put fiberglass warning sign 1 foot North of Monument. painted all ties yellow.

(c) (d) (e) Plan view of corner with ties to at least 4 witness monuments. If in disagreement with previously established corner, show the distances between the two corners and also indicate the ties to the disputed corner.



(i) I, David L. Osterbrink RLS No. S-2014
 (type or print name) certify that the corner location on this record was determined by me or under my direction and control and that this U.S. Public Land Survey Monument Record is correct and complete to the best of my knowledge and belief.

David L. Osterbrink Signature
9-21-94 Date



Index No. N-9

Stamp 3804290000

ONEIDA COUNTY
NW 33-38-4
+
8-9-94
S2014
SURVEY MARKER

REGISTER OF DEEDS OFFICE
ONEIDA COUNTY WIS
FILED
OCT 19 1994
At _____ O'Clock _____ M
THOMAS H. LEIGHTON
REGISTER OF DEEDS