

APR 17 2017

AT \_\_\_\_\_ O'CLOCK \_\_\_\_\_ M  
KYLE J. FRANSON  
REGISTER OF DEEDS

# U.S. PUBLIC LAND SURVEY MONUMENT RECORD

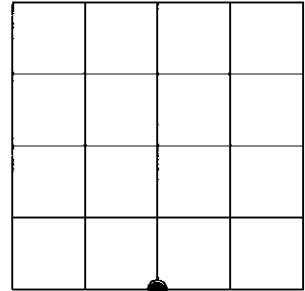
Note: This form is intended and designed to fulfill all requirements of the Wisconsin Administrative Code, Chapter A-E 7.08 U.S. Public Land Monument Record (3)(a)(b)(c)(d)(e)(f)(g)(h)(i). An additional sheet may be added if necessary to conform with said requirements.

(a) CORNER LOCATION: WISCRS - Oneida County  
 South Quarter Corner of Section 29  
 Township 38 North  
 Range 4 East  
 Town of Minocqua  
 County of Oneida

North: 204219.717 USft  
 East: 110317.119 USft  
 Latitude: 45°44'42.61631" N  
 Longitude: 90°00'47.49348" W  
 Datum: NAD 83(2011)  
 GNSS Method: RTK - Direct  
 GNSS Control: WISCRS VRS  
 Record North: 204219.851 USft  
 Record East: 110317.293 USft  
 Record Datum: NAD 83(1991)

(RECORDING AREA)

## SECTION 29



### (b) HISTORY OF ORIGINAL CORNER ESTABLISHMENT

Original Surveyor: Alexander Anderson  
 Date of Survey: Commenced April 26th, 1865  
 Completed May 8th, 1865  
 Original B.T.'S: Hemlock 10" S 53°E 13 lks.  
 Cedar 12" N 5°W 14 lks.

(f)(g)(h) DESCRIPTION OF MONUMENT FOUND AT THIS CORNER AND IF IT WAS ACCEPTED, STATE ALL EVIDENCE (MATERIAL, TESTIMONIAL, OCCUPATIONAL, PLATS, RECORDS, OTHER MONUMENTS) USED AS A BASIS FOR ESTABLISHING LOCATION. IF NOT ACCEPTED OR IF NOTHING WAS FOUND, STATE EVIDENCE USED AS BASIS FOR ESTABLISHING LOCATION. IF REESTABLISHED THROUGH LOST CORNER PROPORTIONATE METHODS, INDICATE ALL MONUMENTS, DISTANCES AND DIRECTIONS USED TO ESTABLISH. INDICATE TYPE OF MONUMENT AND SIGN POST FOUND OR SET.

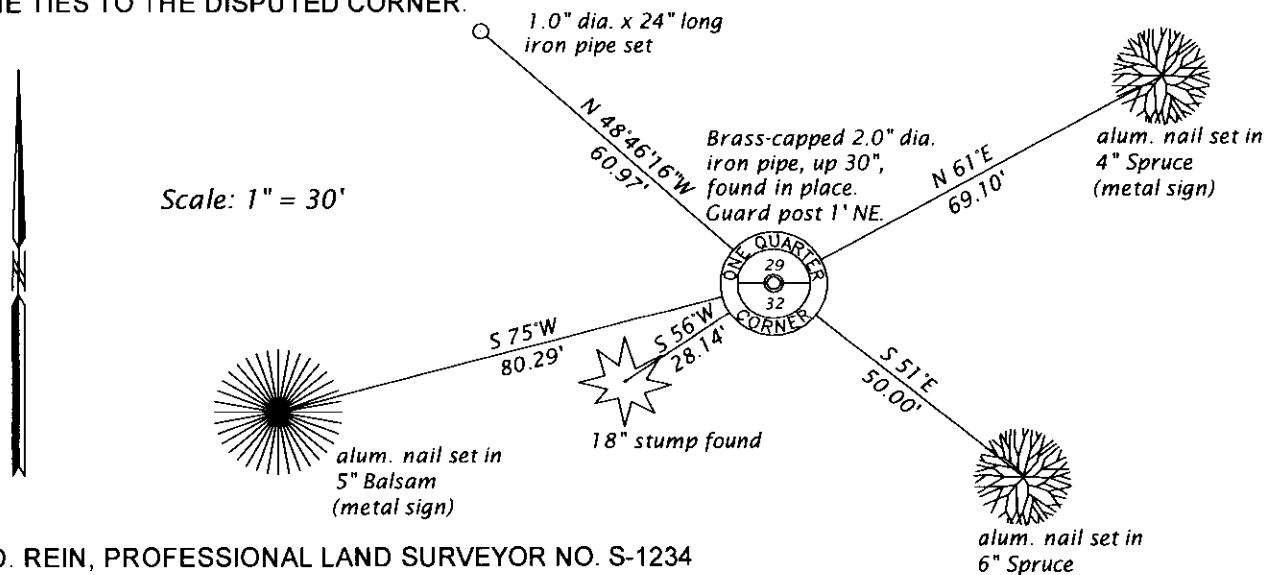
December 8, 1961 - NEPCO survey (NEPCO Book 2, page 45) map drawn by Wm. H. Stuth, for a survey of Section 29, T38N, R4E, legends this corner "iron pipe - Brass cap", referenced by bt's: 7" Aspen S54°W, 28.0' and 7" Aspen N86°E, 10.0'

May 27, 1986 - Owens-Illinois (NEPCO Book 2, page 43) map drawn by W. H. Stuth, for surveys by NEPCO & O.I. in 1961 and 1964, of Section 29, T38N, R4E, legends corner "by others" at proportionate distance between the section corners.

March 21, 2017 - James D. Rein, Professional Land Surveyor No. 1234, we recovered a brass capped 2.0" o.d. iron pipe, which I accept as being a good faith reestablishment of the lost corner, by proportionate measurement, because it's position is harmonious with both the Oneida County published GPS corner and our previously GPS observed corner positions as shown on the above identified Owens-Illinois map. We make reference ties as shown in plan.

The coordinate value shown has been verified by at least one of the following methods: 1) comparison to a previously GPS determined published value; 2) the value is the average of two or more GPS observations at a markedly different time; 3) one or more distances were measured back to the GPS observed corner from temporary GPS observed offset locations.

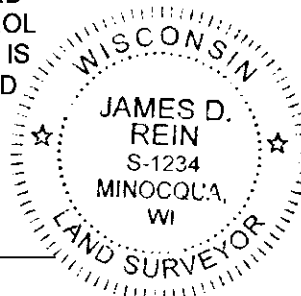
(c)(d)(e) PLAN VIEW OF CORNER WITH TIES TO AT LEAST 4 WITNESS MONUMENTS. IF IN DISAGREEMENT WITH PREVIOUSLY ESTABLISHED CORNER, SHOW THE DISTANCE BETWEEN THE TWO CORNERS AND ALSO INDICATE THE TIES TO THE DISPUTED CORNER.



(i) I, JAMES D. REIN, PROFESSIONAL LAND SURVEYOR NO. S-1234 HEREBY CERTIFY THAT THE CORNER LOCATION ON THIS RECORD WAS DETERMINED BY ME OR UNDER MY DIRECTION AND CONTROL AND THAT THIS U.S. PUBLIC LAND SURVEY MONUMENT RECORD IS CORRECT AND COMPLETE TO THE BEST OF MY KNOWLEDGE AND BELIEF.

*[Handwritten Signature]*

4-10-17  
DATE



INDEX NO. V-7  
3804290020