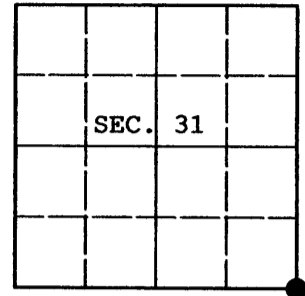


U.S. PUBLIC LAND SURVEY MONUMENT RECORD

Note: This form is intended and designed to fulfill all requirements of Wisconsin Administrative Code, Chapter A-E 7.08 U.S. Public Land Survey Monument Record (3) (a) (b) (c) (d) (e) (f) (g) (h) (i). An additional sheet may be added if necessary to conform with said requirements.

(a) CORNER LOCATION: Plane Coordinates
 Cor. of Secs. 5, 6, 31 & 32 X:
 Township 37 & 38 North Y:
 Range 4 East of the 4th P.M. Datum:
 Town of Minocqua County of Oneida



(b) HISTORY OF ORIGINAL CORNER ESTABLISHMENT

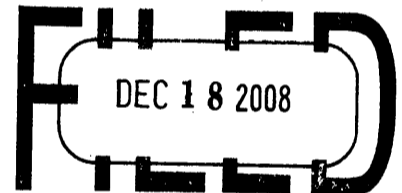
Original Surveyor: Alexander Anderson Original Accessories:
 Date of Survey: Commenced July, 1864 Hemlock 12" N.41°W., 37 lks.
 Completed July, 1864 Hemlock 10" N.38°E., 26 lks.
 Fir 8" S.34°E., 8 lks.
 Hemlock 15" S.47°W., - lks.

(b) (f) (g) (h) Description of monument found at this corner and if it was accepted, state all evidence (material, testimonial, occupational, plats, records, other monuments) used as a basis for accepting. If not accepted or if nothing was found, state evidence used as basis for establishing location. If re-established through lost corner proportionate methods, indicate all monuments, distances and directions used to establish. Indicate type of monument and sign post found or set.

May 27, 1986: Map by William Stuth, RLS indicates corner is "by others."

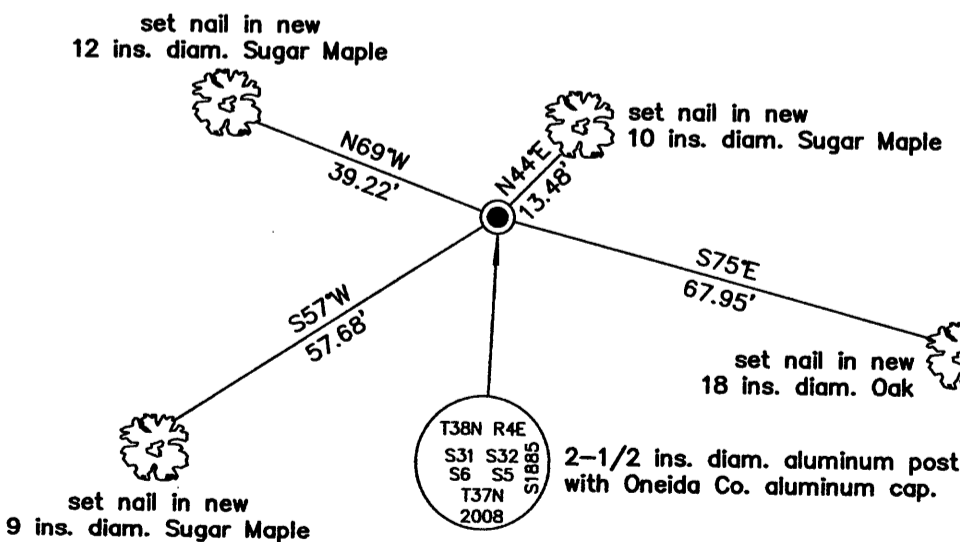
November 11, 2008: I found and accepted the remains of a wood post, a hole in a ring of stone, with the rotted remains of a wood post nearby. As evidenced by my rapid-static GPS survey, this location agrees favorably with the two corners to the East, both of which have been previously certified. In the post hole, I set an aluminum post, 30 ins. long, 2-1/2 ins. diam. with Oneida Co. aluminum cap projecting 4 ins. above the ground surface. I established accessories as shown below and set a white plastic sign post bearing Northeast, 1 ft. dist.

REGISTER OF DEEDS OFFICE
 ONEIDA COUNTY, WIS.



At _____ O'Clock _____ M
THOMAS H. LEIGHTON
 REGISTER OF DEEDS

(c) (d) (e) Plan view of corner with ties to at least 4 witness monuments. If in disagreement with previously established corner, show the distances between the two corners and also indicate the ties to the disputed.



(i) I, Jeffrey W. Austin, Registered Land Surveyor No. S-1885, hereby certify upon honor that the corner location on this record was determined by me or under my direction and control and that this U.S. Public Land Survey Monument Record is correct and complete to the best of my knowledge and belief.

Signature _____ Date DEC 12, 2008



INDEX NO. 2-5 (3804310000)