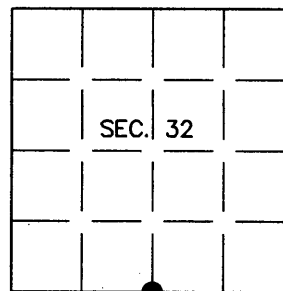


# U.S. PUBLIC LAND SURVEY MONUMENT RECORD

Note: This form is intended and designed to fulfill all requirements of Wisconsin Administrative Code, Chapter A-E 7.08 U.S. Public Land Survey Monument Record (3)(a)(b)(c)(d)(e)(f)(g)(h)(i). An additional sheet may be added if necessary to conform with said requirements.

(a) CORNER LOCATION:  
 1/4 Cor. of Secs. 5 & 32  
 Township 37 & 38 North  
 Range 4 East of the 4th P.M.  
 Town of Minocqua

Plane Coordinates  
 X:  
 Y:  
 Datum:  
 County of Oneida



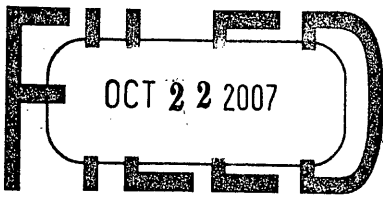
(b) HISTORY OF ORIGINAL CORNER ESTABLISHMENT

Original Surveyor: Alexander Anderson  
 Date of Survey: Commenced July, 1864  
 Completed July, 1864

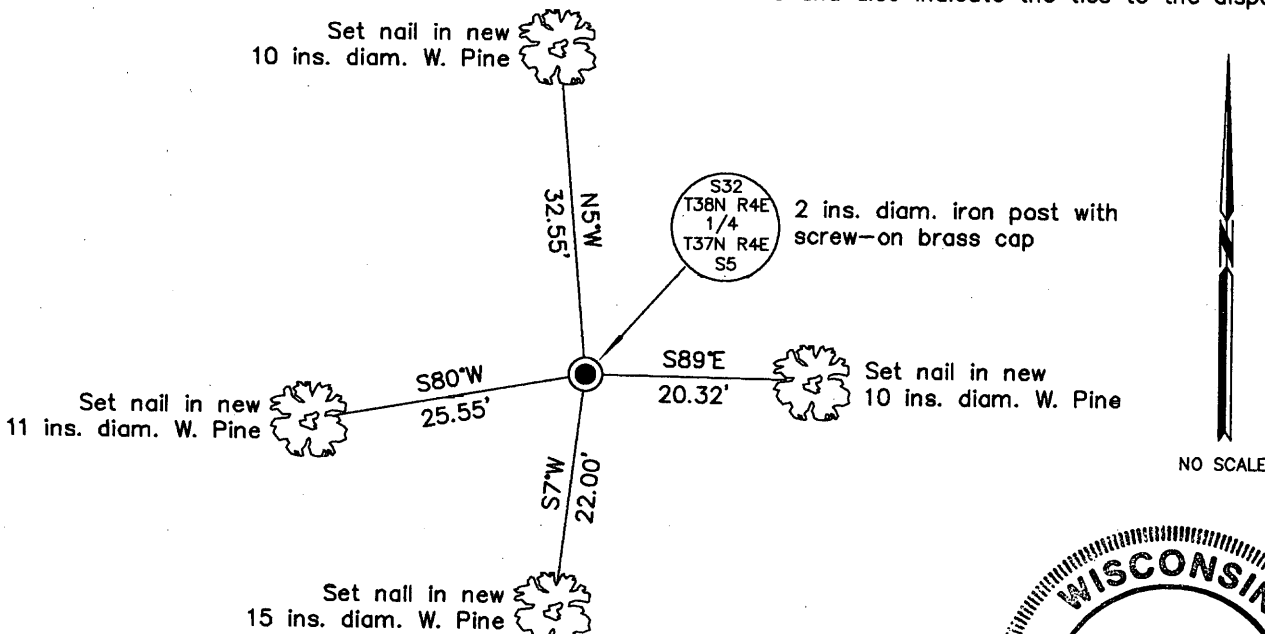
Original Accessories:  
 Tamarack 9" N20°W, 13 lks.  
 Tamarack 9" S36°E, 24 lks.

(b)(f)(g)(h) Description of monument found at this corner and if it was accepted, state all evidence (material, testimonial, occupational, plats, records, other monuments) used as a basis for accepting. If not accepted or if nothing was found, state evidence used as basis for establishing location. If re-established through lost corner proportionate methods, indicate all monuments, distances and directions used to establish. Indicate type of monument and sign post found or set.

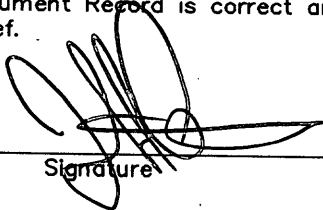
14 June 2006: I found and accepted a 2 ins. diam. iron post with screw-on brass cap projecting 18 ins. above a rock cairn. No evidence of any survey activity remains at this corner, but the monument is similar in character to those found at other reliable corners throughout the county forest. I established accessories as shown below and set a white plastic sign post bearing Southeast, 1 ft. dist.

REGISTER OF DEEDS OFFICE  
 ONEIDA COUNTY, WIS.  
  
 At \_\_\_\_\_ O'Clock \_\_\_\_\_ M  
**THOMAS H. LEIGHTON**  
 REGISTER OF DEEDS

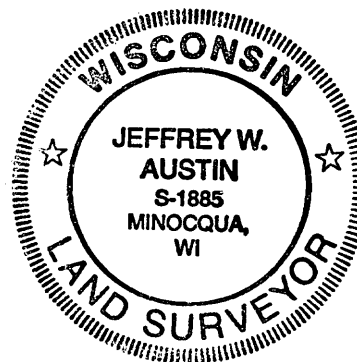
(c)(d)(e) Plan view of corner with ties to at least 4 witness monuments. If in disagreement with previously established corner, show the distances between the two corners and also indicate the ties to the disputed.



(i) I, Jeffrey W. Austin, Registered Land Surveyor No. S-1885, hereby certify upon honor that the corner location on this record was determined by me or under my direction and control and that this U.S. Public Land Survey Monument Record is correct and complete to the best of my knowledge and belief.

  
 Signature

OCT 8, 2007  
 Date



INDEX NO. Z-7 (3804320020)