

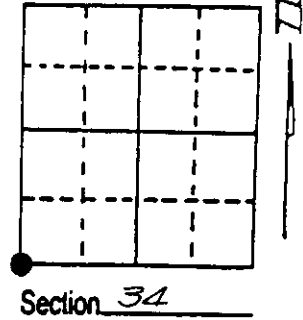
U.S. PUBLIC LAND SURVEY MONUMENT RECORD

Note: This form is intended and designed to fulfill all requirements of Wisconsin Administrative Code, Chapter A-E 7.08 U.S. Public Land Survey Monument Record (3) (a) (b) (c) (d) (e) (f) (g) (h) (i). An additional sheet may be added if necessary to conform with said requirements.

(a) Corner location: Township 38 North
 Range 4 East/West

Town/City/Village MINOCQUA

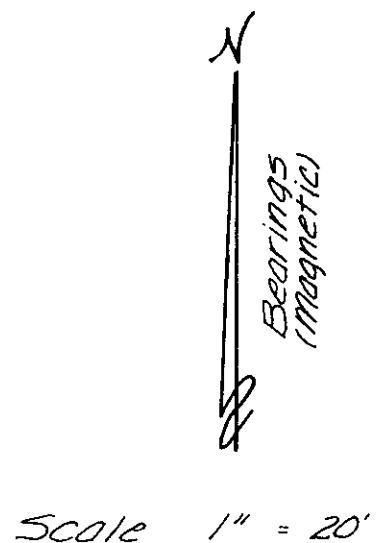
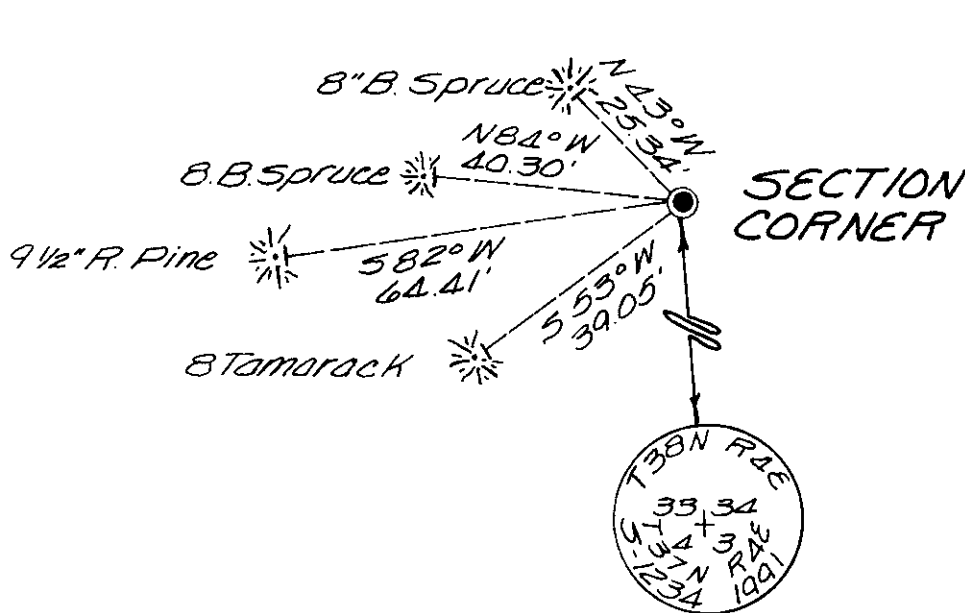
County Oneida



(b) (f) (g) (h) Description of monument found at this corner and if it was accepted, state all evidence (material, testimonial, occupational, plats, records, other monuments) used as a basis for accepting. If not accepted or if nothing was found, state evidence used as basis for establishing location. If reestablished through lost corner proportionate methods, indicate all monuments, distances and directions used to establish. Indicate type of monument found or set and sign post.

- July 27th, 1864 - Alexander Anderson, Deputy Surveyor, set post witnessed by four bearing trees: 24" W. Pine bearing N68°W, 62 links; 8" Spruce bearing N64°E, 35 links; 9" Spruce bearing S32°E, 10 links; and 8" Spruce bearing S41°W, 83 links.
- May, 1960 - William S. Cameron, Registered Land Surveyor, notes, on map, the Section Corner as being an iron rod.
- December, 1961 - William H. Stuth, NEPCO Surveyor, identifies corner on map dated 12/8/61, the Section as a recovered monument by others.
- September 15th, 1972 - John H. Fisher, Registered Land Surveyor, identifies corner on map of Indian Point Woods, as being monumented by a recovered 1" round iron rod.
- August 29th, 1991 - James D. Rein, Registered Land Surveyor No. 1234, recovered a 1" dia. iron rod and a 4" squared scribed post, referenced by four existing bearing trees as shown in plan view. Replaced iron rod with a 2" dia. x 60 long, piston type, aluminum monument. Set county plastic post one foot East of corner monument.

(c) (d) (e) Plan view of corner with ties to at least 4 witness monuments. If in disagreement with previously established corner, show the distances between the two corners and also indicate the ties to the disputed corner.



(i) I, James D. Rein, Registered Land Surveyor No. 1234
 (type or print name) certify that the corner location on this record was determined by me or under my direction and control and that this U.S. Public Land Survey Monument Record is correct and complete to the best of my knowledge and belief.

James D. Rein Signature 9/20-91 Date



Stamp
3804330000

Index No. 2-13