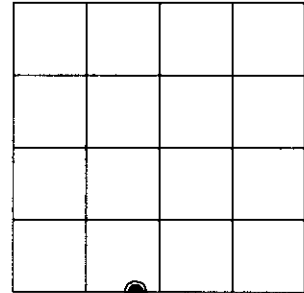


U.S. PUBLIC LAND SURVEY MONUMENT RECORD

Note: This form is intended and designed to fulfill all requirements of Wisconsin Administrative Code, Chapter A-E 7.08 U.S. Public Land Survey Monument Record (3)(a)(b)(c)(d)(e)(f)(g)(h)(i). An additional sheet may be added if necessary to conform with said requirements.

(a) CORNER LOCATION: * on south line

W. Meander corner* of Sec. 33 State Plane Coordinates
 Township 38 North X _____
 Range 4 East Y _____
 Town/~~XXXXXX~~ Minocqua Datum Base _____
 County of Oneida



(b) HISTORY OF ORIGINAL CORNER ESTABLISHMENT

Original Surveyor: Alexander Anderson Original B.T.'S
 Date of Survey: Commenced July 27, 1864 Spruce 8" N23°E, 21 links
 Completed July 27, 1864 Spruce 6" S31°E, 14 links

(f)(g)(h) Description of monument found at this corner and if it was accepted, state all evidence (material, testimonial, occupational, plats, records, other monuments) used as a basis for establishing location. If not accepted or if nothing was found, state evidence used as basis for establishing location. If reestablished through lost corner proportionate methods, indicate all monuments, distances and directions used to establish. Indicate type of monument and sign post found or set.

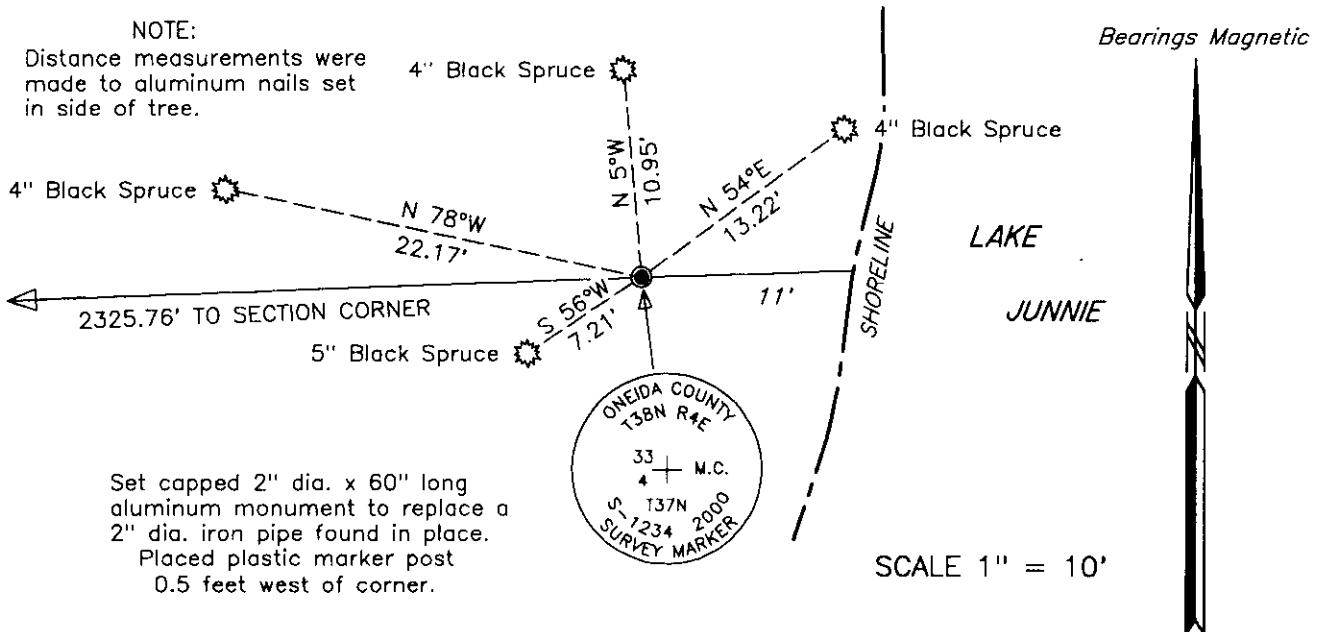
October 11, 1937 – Oneida County CCC #8 Ariel survey field book – Set new Tam. post for Original M.C. on west shore. Set by course and distance from Orig. NE Spruce – broken off, marks OK. SE B.T. not found. Made new: Tam. 5" N29°W, 0.979 chains; Tam. 6" S78°W, 0.703 chains.

1961 – William Stuth, Surveyor for NEPCO, shows recovered monument located 2325.6 feet east of the southwest corner of Section 33.

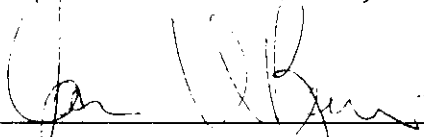
September 20, 1994 – David L. Osterbrink RLS No. 2014– section summary map identifies corner monumented by a 2" capped iron pipe, located 2325.78 feet east of the southwest corner of Section 33.

April 18, 2000 – James D. Rein, RLS No. 1234 – recovered a 2" dia. iron pipe extending 18" above ground level. Corner position is harmonious with both the NEPCO and Osterbrink surveys. Thus we replaced the iron pipe with a capped 2" dia. x 60" long aluminum piston type aluminum monument. Made four new bearing trees as shown in plan and set a county plastic marker stake 0.5 feet west of corner monument.

(c)(d)(e) Plan view of corner with ties to at least 4 witness monuments. If in disagreement with previously established corner, show the distance between the two corners and also indicate the ties to the disputed corner.



(i) I, James D. Rein, Registered Land Surveyor No. 1234, hereby certify that the corner location on this record was determined by me or under my direction and control and that this U.S. Public Land Survey Monument Record is correct and complete to the best of my knowledge and belief.

 _____
 Signature Date September 27, 2000



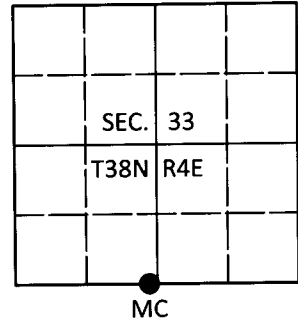
INDEX NO. Z 10-11

U.S. PUBLIC LAND SURVEY MONUMENT RECORD

Note: This form is intended and designed to fulfill all requirements of Wisconsin Administrative Code, Chapter A-E 7.08 U.S. Public Land Survey Monument Record (3)(a-1).

(a) CORNER LOCATION
 Meander Cor. of Secs. 4 & 33
 Township 37 & 38 North
 Range 4 East of the 4th P.M.
 Town of Lynne/Minocqua
 County of Oneida

WISCRS - Oneida County
 N: 199,098.59 USft
 E: 115,184.18 USft
 Datum: NAD 83(2011)
 GNSS Method: Real-Time Network
 GNSS Control: WISCORS VRS



(b) HISTORY OF ORIGINAL CORNER ESTABLISHMENT

Original Surveyor: _____ Original Accessories: _____

Date of Survey _____ Commenced: _____
 Completed: _____

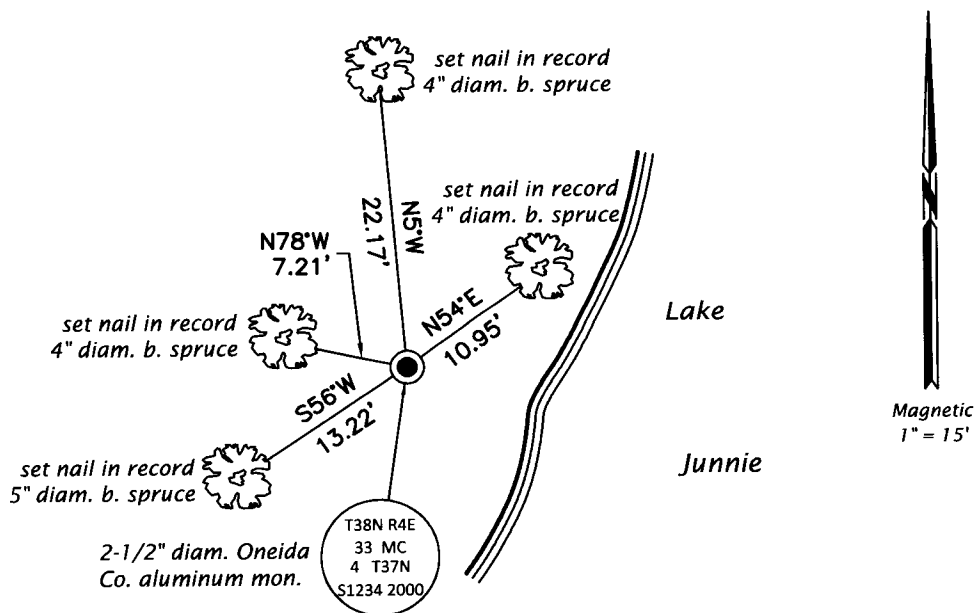
(b)(f)(g)(h) Description of monument found at this corner and if it was accepted, state all evidence (material, testimonial, occupational, plats, records, other monuments) used as a basis for accepting. If not accepted or if nothing was found, state evidence used as basis for establishing location. If re-established through lost corner proportionate methods, indicate all monuments, distances and directions used to establish. Indicate type of monument and sign post found or set.

This is a perpetuation of a previous USPLS Monument Record by James D. Rein, RLS dated September 27, 2000 and filed in the office of the Oneida County Register of Deeds. A complete history of the corner can be found on the previous monument record. I accept the previous location as a true and faithful perpetuation or reestablishment of the original corner location and further perpetuate it as follows.

January 9, 2017: Jeff Austin visited the corner and recovered the record monument, a 2-1/2" diam. aluminum pipe with a 3-1/4" diam. Oneida Co. aluminum cap 4" beneath the bog surface. Rein's bearing tree distances were rotated as shown below. Accessories were found or established as shown below. A white vinyl sign post was found West, 0.5 ft.

The coordinate value shown has been verified by at least one of the following methods: 1) comparison to a previously GPS determined published value; 2) the value is the average of two or more GPS observations at a markedly different time; 3) one or more distances were measured back to the GPS observed corner from temporary GPS observed offset locations.

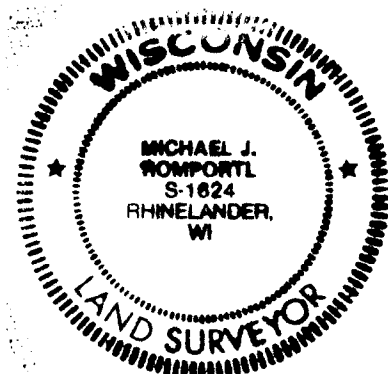
(c)(d)(e) Plan view of corner with ties to at least 4 witness monuments. If in disagreement with previously established corner, show the distances between the two corners and also indicate the ties to the disputed.



REGISTER OF DEEDS OFFICE
 ONEIDA COUNTY
 FILED

JUL 11 2017

AT _____ O'CLOCK _____ M
 KYLE J. FRANSON
 REGISTER OF DEEDS



(i) I, Michael J. Romportl, Professional Land Surveyor No. S-1624, hereby certify that the corner location on this record was determined by me or under my direction and control and that this U.S. Public Land Survey Monument Record is correct and complete to the best of my knowledge and belief.

Michael J. Romportl
 Signature

7/11/2017
 Date

3804330023 (INDEX NO. Z-10,11)