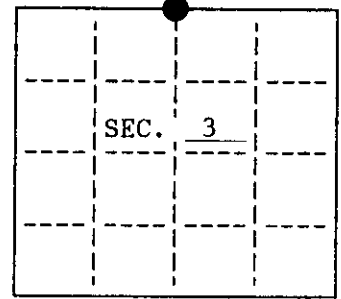


U. S. PUBLIC LAND SURVEY MONUMENT RECORD

Note: This form is intended and designed to fulfill all requirements of Wisconsin Administrative Code, Chapter A-E 7.08 U.S. Public Land Survey Monument Record (3)(a)(b)(c)(d)(e)(f)(g)(h)(i). An additional sheet may be added if necessary to conform with said requirements.

(a) CORNER LOCATION: State Plane Coordinates
 North 1/4 corner of Sec. 3 X _____
 Township 37 North Y _____
 Range 4 East Datum Base _____
 Town/~~XXX~~ Lynne County of Oneida



(b) HISTORY OF ORIGINAL CORNER ESTABLISHMENT

Original Surveyor: Alexander Anderson
 Date of Survey: Commenced July, 1864
 Completed July, 1864

Original B.T.'S

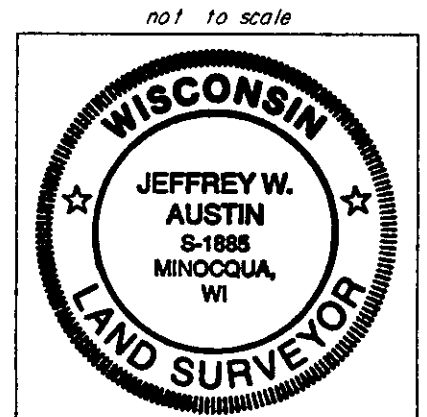
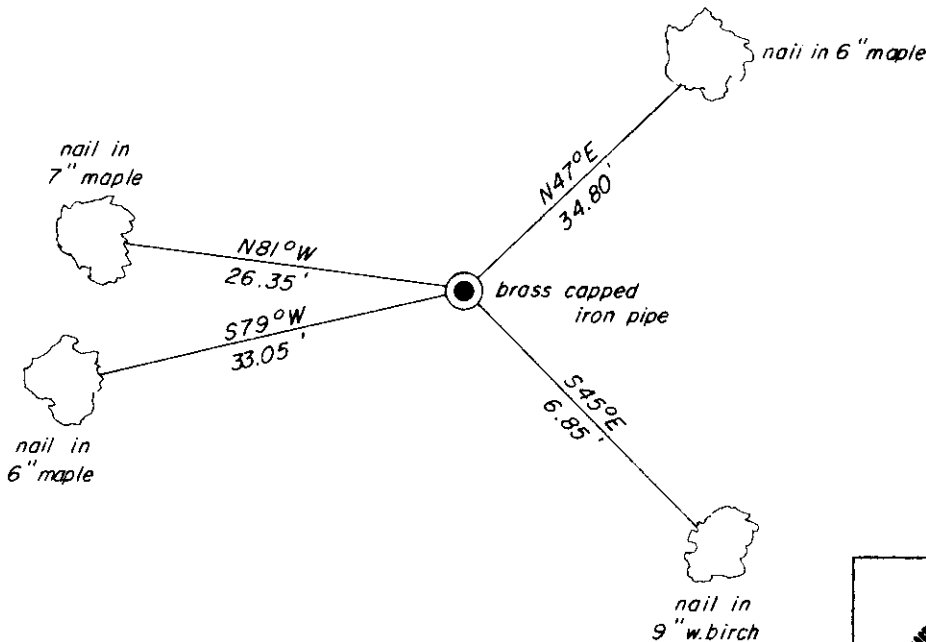
9" Hemlock N20°W, 13 lks.
 15" Birch S57°E, 21 lks.

(b)(f)(g)(h) Description of monument found at this corner and if it was accepted, state all evidence (material, testimonial, occupational, plats, records, other monuments) used as a basis for accepting. If not accepted or if nothing was found, state evidence used as basis for establishing location. If reestablished through lost corner proportionate methods, indicate all monuments, distances and directions used to establish. Indicate type of monument and sign post found or set.

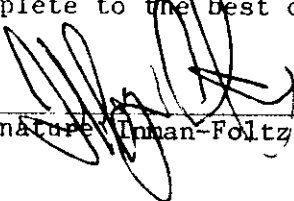
June, 1956 - Notes by Wincentzen indicate corner is monumented with a 4"x 4" wood post witnessed by a 10" W. Birch S30°W, 17.5 feet.

May 24, 1994 - I found and accepted a 2" diameter brass-capped iron pipe witnessed by Wincentzen's 12" W. Birch snag S41°W, 18.2 feet. I witnessed the monument as shown below and found a plastic signpost south 1 foot.

(c)(d)(e) Plan view of corner with ties to at least 4 witness monuments. If in disagreement with previously established corner, show the distances between the two corners and also indicate the ties to the disputed.



(i) I, Jeffrey W. Austin, Registered Land Surveyor hereby certify that the corner location on this record was determined by me or under my direction and control and that this U.S. Public Land Survey Monument Record is correct and complete to the best of my knowledge and belief.


 Signature: Inman-Foltz & Associates, Inc. Date: 9-22-94

INDEX NO. 4-15

JUN 12 2023

KYLE J. FRANSON
REGISTER OF DEEDS

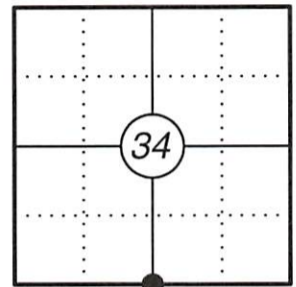
U.S. PUBLIC LAND SURVEY MONUMENT RECORD

This form is intended and designed to fulfill all requirements of Wisconsin Administrative Code, Chapter A-E 7.08 U.S. Public Land Survey Monument Record (3) (a)(b)(c)(d)(e)(f)(g)(h)(i). An additional sheet may be added if necessary to confirm with said requirements.

(a) Corner Location:

S 1/4 Corner Section 34
Township 38 North
Range 4 East
Town of Minocqua
County of Oneida

Corner ID: 3804340020



(b) History of Original Corner:

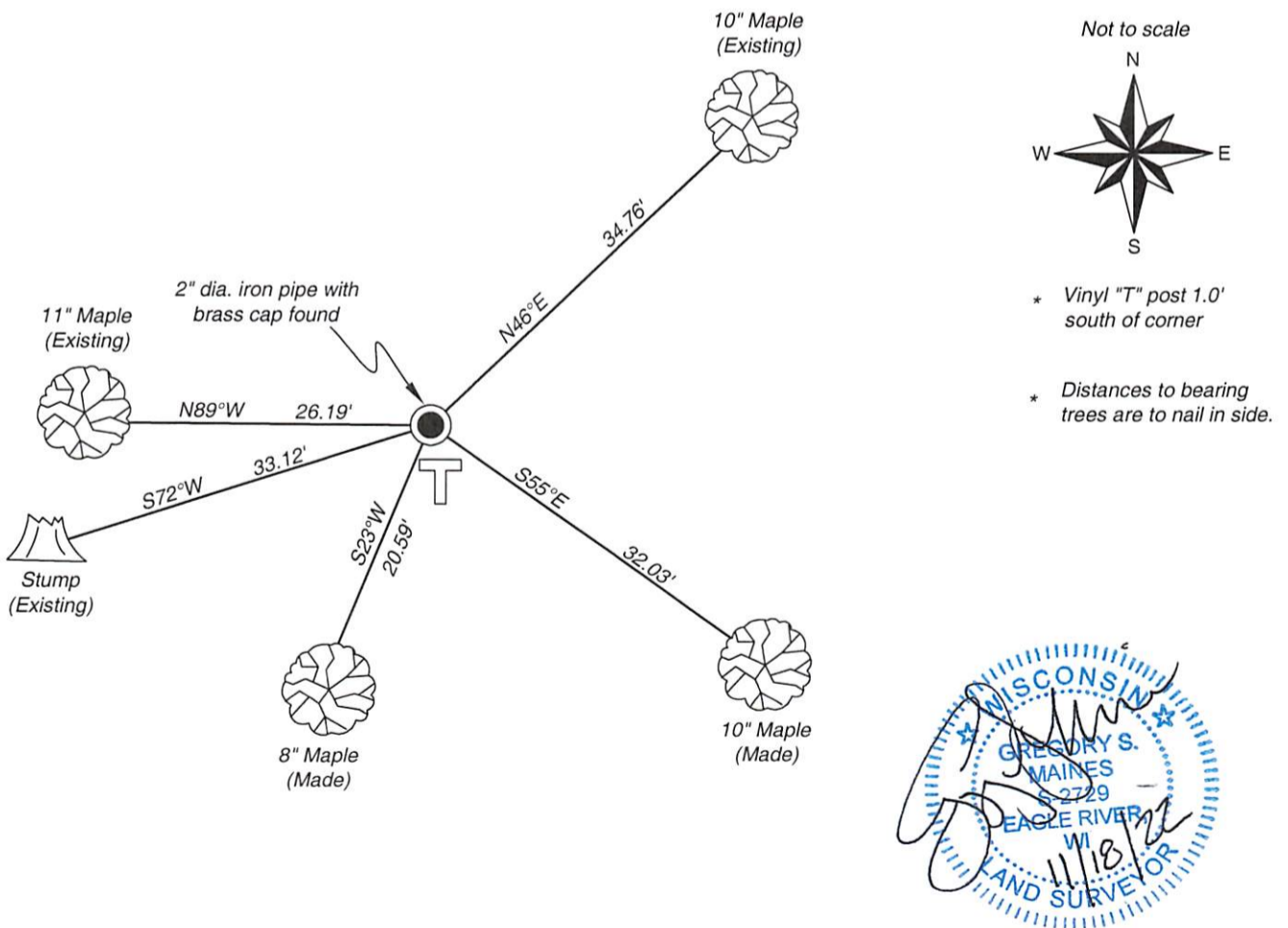
Original Surveyor: Alexander Anderson Original B.T.'s: 9" Hemlock - N 20° W, 13 Links
Date of Survey: July 1864 15" Birch - S 57° E, 21 Links

(f)(g)(h) Description of monument found at this corner and if it was accepted, state all evidence (material, testimonial, occupational, plats, records, other monuments) used as a basis for establishing location. If reestablishing through lost corner proportionate methods, indicate all monuments, distances, and directions used to establish. Indicate type of monument and sign post found or set.

For corner history, see previous U.S. Public Land Survey Monument Record by Jeffrey W. Austin, dated September 22, 1994.

07/27/2022 - I found and accepted a 2" diameter iron pipe with brass cap at the corner location as well as three existing bearing trees, one of which in know a stump. I set two new bearing trees to witness the corner as shown below.

(c)(d)(e) Plan view of corner with ties to at least four witnesses. If in disagreement with previously established corner, show the distances between the two corners and also indicate the tie to the disputed corner.



Certification

I, Gregory S. Maines, Professional Land Surveyor No. 2729, hereby certify that the corner location on this record was referenced by me or under my direction and control and that this U.S. Public Land Survey Monument Record is complete to the best of my knowledge and belief. REF: 2022208