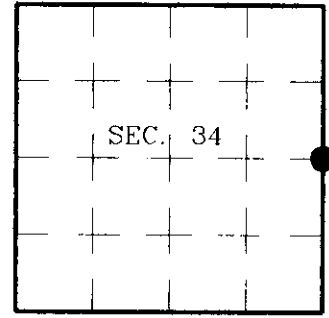


# U.S. PUBLIC LAND SURVEY MONUMENT RECORD

Note: This form is intended and designed to fulfill all requirements of Wisconsin Administrative Code, Chapter A-E 7.08 U.S. Public Land Survey Monument Record (3)(a)(b)(c)(d)(e)(f)(g)(h)(i). An additional sheet may be added if necessary to conform with said requirements.

(a) CORNER LOCATION: State Plane Coordinates  
 East 1/4 Corner of Section 34 X  
 Township 38 North Y  
 Range 4 East Datum Base  
 Town of Minocqua County of Oneida



(b) HISTORY OF ORIGINAL CORNER ESTABLISHMENT

Original Surveyor: Alexander Anderson  
 Date of Survey: Commenced April, 1865  
 Completed May, 1865

Original B.T.s

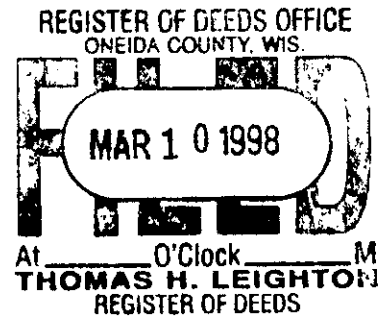
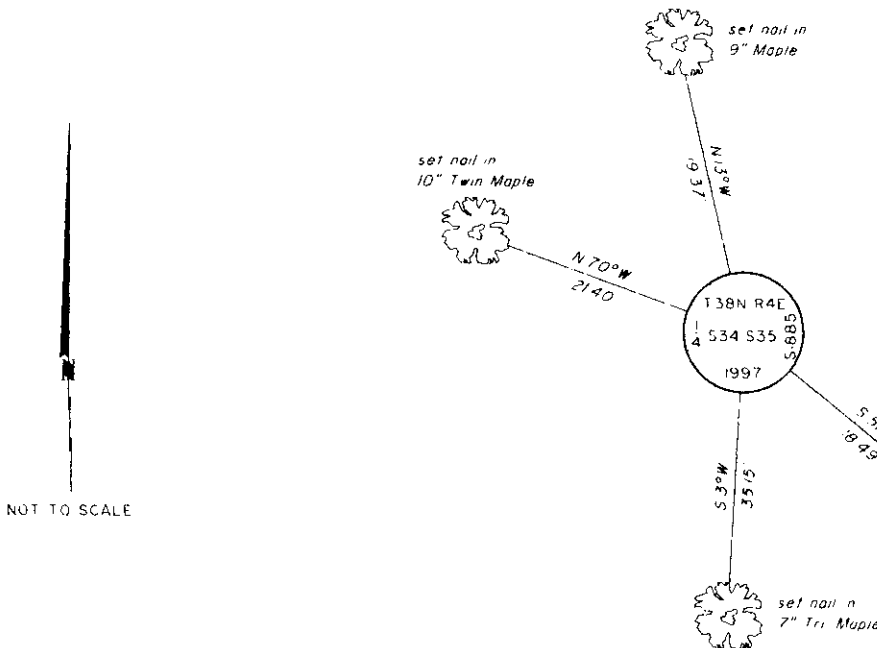
Cedar 8" N22°W, 11 lks.  
 Fir 8" S82°E, 8 lks.

(b)(f)(g)(h) Description of monument found at this corner and if it was accepted, state all evidence (material, testimonial, occupational, plats, records, other monuments) used as a basis for accepting. If not accepted or if nothing was found, state evidence used as basis for establishing location. If reestablished through lost corner proportionate methods, indicate all monuments, distances and directions used to establish. Indicate type of monument and sign post found or set.

1956: Wincentzen set a wood post by single proportionate measure with no accessories.

November 20, 1997: I found an old wood post lying horizontal near the proportioned corner location. I found a Nekoosa tag in a nearby tree indicating their wood post was approximate. Unable to find the old post hole, I established this corner at the midpoint of a line connecting the Northeast and Southeast Section Cors. This location is supported by other corners in Section 34. The East Section line of Section 34 bears N3°38'34"E, 5147.62 feet. I set a 2-1/2" dia., 30" long aluminum pipe with 3-1/4" dia. Oneida Co. aluminum cap 6" above grade and marked as shown below. I established accessories as shown below and set a plastic sign post East, 1 foot.

(c)(d)(e) Plan view of corner with ties to at least 4 witness monuments. If in disagreement with previously established corner, show the distances between the two corners and also indicate the ties to the disputed.



(i) I, Jeffrey W. Austin, Registered Land Surveyor S-1885, hereby certify that the corner location on this record was determined by me or under my direction and control and that this U.S. Public Land Survey Monument Record is correct and complete to the best of my knowledge and belief.

Signature

Date



INDEX NO. X-17  
438 of 34 2000

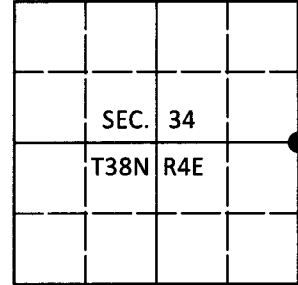
2-13-98

**U.S. PUBLIC LAND SURVEY MONUMENT RECORD**

Note: This form is intended and designed to fulfill all requirements of Wisconsin Administrative Code, Chapter A-E 7.08 U.S. Public Land Survey Monument Record (3)(a-i).

(a) CORNER LOCATION  
 1/4 Cor. of Secs. 34 & 35  
 Township 38 North  
 Range 4 East of the 4th P.M.  
 Town of Minocqua  
 County of Oneida

WISCRS - Oneida County  
 N: 201,867.80 USft  
 E: 123,488.67 USft  
 Datum: NAD 83(2011)  
 GNSS Method: RTN - Direct  
 GNSS Control: WISCORS VRS



(b) HISTORY OF ORIGINAL CORNER ESTABLISHMENT

Original Surveyor: \_\_\_\_\_ Original Accessories: \_\_\_\_\_  
 Date of Survey Commenced: \_\_\_\_\_ See previous USPLS Monument Record  
 Completed: \_\_\_\_\_

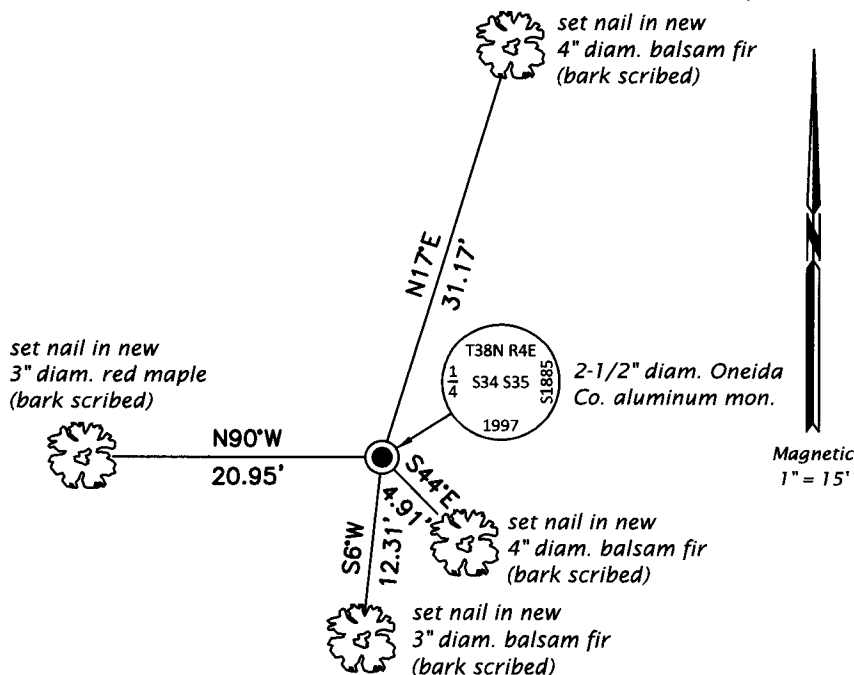
(b)(f)(g)(h) Description of monument found at this corner and if it was accepted, state all evidence (material, testimonial, occupational, plats, records, other monuments) used as a basis for accepting. If not accepted or if nothing was found, state evidence used as basis for establishing location. If re-established through lost corner proportionate methods, indicate all monuments, distances and directions used to establish. Indicate type of monument and sign post found or set.

*This is a perpetuation of a previous USPLS Monument Record by Jeffrey W. Austin, RLS dated February 13, 1998 and filed in the office of the Oneida County Register of Deeds. A complete history of the corner can be found on the previous monument record. I accept the previous location as a true and faithful perpetuation or reestablishment of the original corner location and further perpetuate it as follows.*

*July 27, 2018: I found and accepted the record monument, a 2-1/2" diam. aluminum pipe with a 3-1/4" diam. Oneida Co. aluminum cap projecting 4" above the ground surface. All of the record bearing trees have been recently cut. I found or established accessories as shown below. I found a white vinyl sign post bearing East, 0.9 ft.*

*The coordinate value shown has been verified by at least one of the following methods: 1) comparison to a previously GPS determined published value; 2) the value is the average of two or more GPS observations at a markedly different time; 3) one or more distances were measured back to the GPS observed corner from temporary GPS observed offset locations.*

(c)(d)(e) Plan view of corner with ties to at least 4 witness monuments. If in disagreement with previously established corner, show the distances between the two corners and also indicate the ties to the disputed.



REGISTER OF DEEDS OFFICE  
 ONEIDA COUNTY  
 FILED

AUG 16 2018

KYLE J. FRANSON  
 REGISTER OF DEEDS

(i) I, Jeffrey W. Austin, Professional Land Surveyor No. S-1885, hereby certify that the corner location on this record was determined by me or under my direction and control and that this U.S. Public Land Survey Monument Record is correct and complete to the best of my knowledge and belief.

\_\_\_\_\_  
 Signature Date Aug 8, 2018