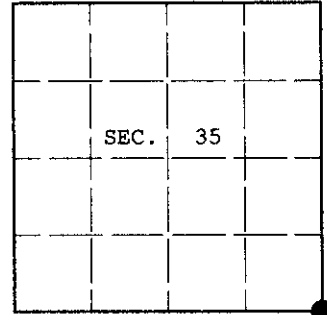


U.S. PUBLIC LAND SURVEY MONUMENT RECORD

Note: This form is intended and designed to fulfill all requirements of Wisconsin Administrative Code, Chapter A-E 7.08 U.S. Public Land Survey Monument Record (3) (a) (b) (c) (d) (e) (f) (g) (h) (i). An additional sheet may be added if necessary to conform with said requirements.

(a) CORNER LOCATION:
 Corner common to Secs. 1, 2, 35 and 36
 Township 37 & 38 North
 Range 4 East, 4th Principal Meridian
 Town of Minocqua

Plane Coordinates
 X:
 Y:
 Datum:
 County of Oneida



(b) HISTORY OF ORIGINAL CORNER ESTABLISHMENT

Original Surveyor: Alexander Anderson
 Date of Survey: Commenced: July 13, 1864
 Completed: July 24, 1864

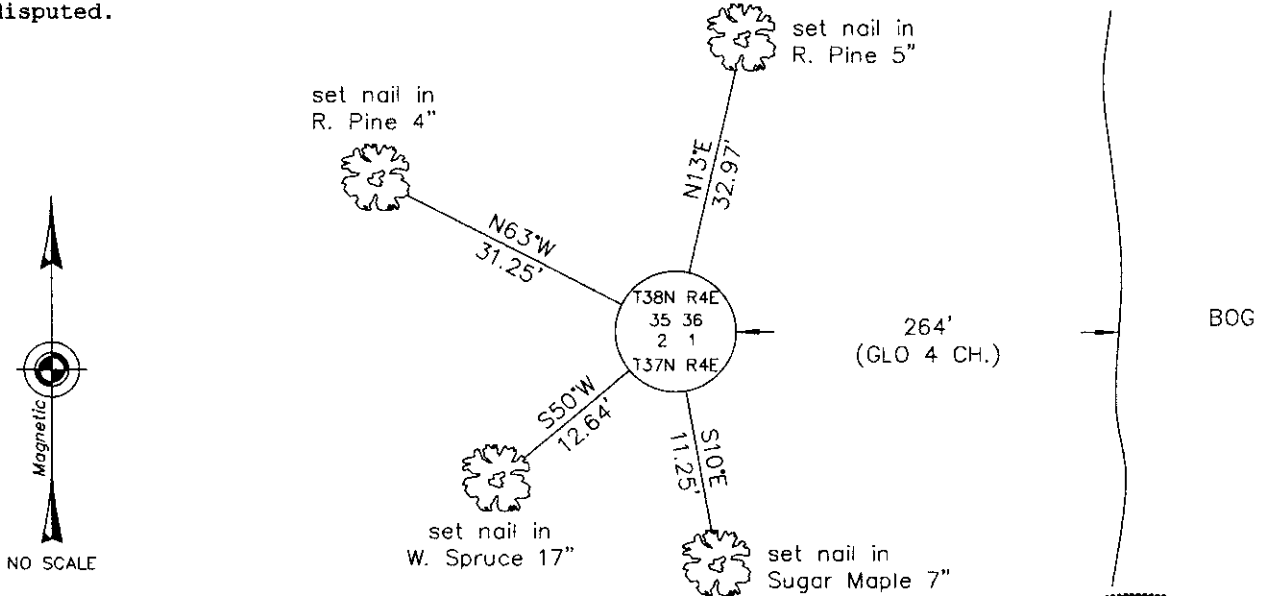
Original Accessories:

- Hemlock 12 N.51°W. 18 lks.
- Hemlock 10 N.32°E. 5 lks.
- Hemlock 9 S.18°E. 6 lks.
- Hemlock 8 S.61°W. 34 lks.

(b) (f) (g) (h) Description of monument found at this corner and if it was accepted, state all evidence (material, testimonial, occupational, plats, records, other monuments) used as a basis for accepting. If not accepted or if nothing was found, state evidence used as basis for establishing location. If reestablished through lost corner proportionate methods, indicate all monuments, distances and directions used to establish. Indicate type of monument and sign post found or set.

April 26, 2003: I found and accepted a galv. iron post, 2 ins. diam. with screw-on brass cap 22 ins. above the ground and marked as shown below. A rock cairn surrounds the monument. I found the stump holes of two GLO bearing trees bearing N.48°W., 18 lks. and S.65°W., 34 lks. dist. I established accessories as shown below and set a plastic sign post North, 0.7 ft. dist.

(c) (d) (e) Plan view of corner with ties to at least 4 witness monuments. If in disagreement with previously established corner, show the distances between the two corners and also indicate the ties to the disputed.



(i) I, Jeffrey W. Austin, Registered Land Surveyor No. S-1885, hereby certify upon honor that the corner location on this record was determined by me or under my direction and control and that this U.S. Public Land Survey Monument Record is correct and complete to the best of my knowledge and belief.

Jeffrey W. Austin #S-1885

SEPT. 15, 2003
 Date



3804350000