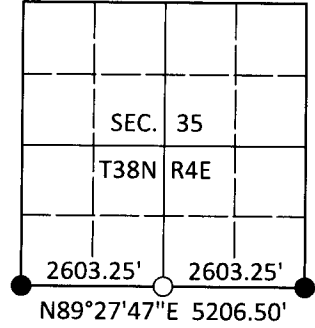


U.S. PUBLIC LAND SURVEY MONUMENT RECORD

Note: This form is intended and designed to fulfill all requirements of Wisconsin Administrative Code, Chapter A-E 7.08 U.S. Public Land Survey Monument Record (3)(a-i).

(a) CORNER LOCATION
 1/4 Cor. of Secs. 2 & 35
 Township 37 & 38 North
 Range 4 East of the 4th P.M.
 Town of Lynne & Minocqua
 County of Oneida

WISCRS - Oneida County
 N: 199,324.03 USft
 E: 125,927.90 USft
 Datum: NAD 83(1991)
 GNSS Method: RTN - Direct
 GNSS Control: WISCORS VRS



(b) HISTORY OF ORIGINAL CORNER ESTABLISHMENT

Original Surveyor: Alexander Anderson

Original Accessories:

Date of Survey Commenced: July 13, 1864
 Completed: July 24, 1864

Birch 18" N10°W, 20 lks.
 Hemlock 12" S39°E, 19 lks.

(b)(f)(g)(h) Description of monument found at this corner and if it was accepted, state all evidence (material, testimonial, occupational, plats, records, other monuments) used as a basis for accepting. If not accepted or if nothing was found, state evidence used as basis for establishing location. If re-established through lost corner proportionate methods, indicate all monuments, distances and directions used to establish. Indicate type of monument and sign post found or set.

Oct., 1977: Survey map by W.H. Stuth in NEPCO book 2 on page 61 identifies corner as being marked by a wood post at the midpoint of the mile measuring 79.00 chains.

Sep. 17, 2018: I searched the corner location and found no evidence of the wood post set by Stuth. At the midpoint of the mile, I set a 1" diam., 30" long aluminum pipe with a 2-1/2" diam. Oneida Co. aluminum cap projecting 2" above the ground surface. I deposited a blue/black DEEP-1 magnet adjacent to the monument. An East/West blue painted line bears South, 5 ft. I found or established accessories as shown below. I set a white vinyl sign post bearing Northwest, 1.0 ft.

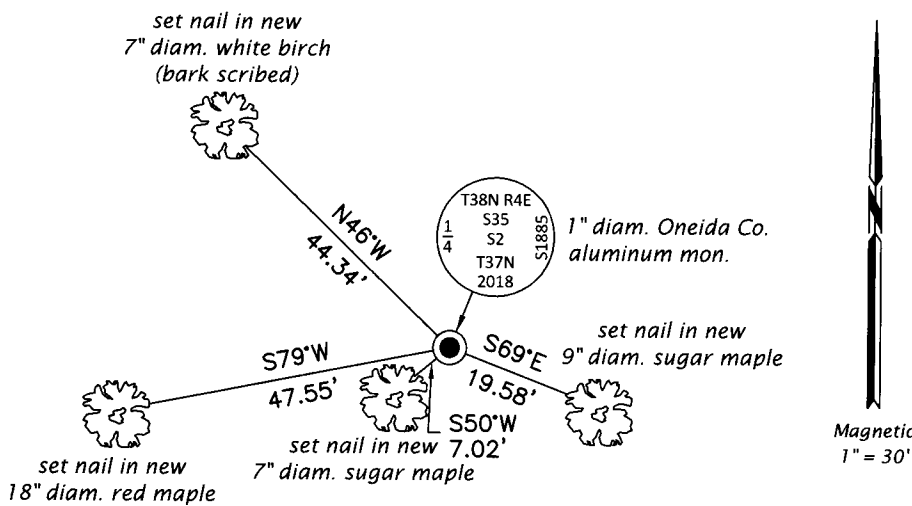
The coordinate value shown has been verified by at least one of the following methods: 1) comparison to a previously GPS determined published value; 2) the value is the average of two or more GPS observations at a markedly different time; 3) one or more distances were measured back to the GPS observed corner from temporary GPS observed offset locations.

REGISTER OF DEEDS OFFICE
 ONEIDA COUNTY
 FILED

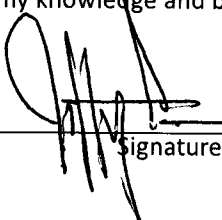
DEC 31 2018

KYLE J. FRANSON
 REGISTER OF DEEDS

(c)(d)(e) Plan view of corner with ties to at least 4 witness monuments. If in disagreement with previously established corner, show the distances between the two corners and also indicate the ties to the disputed.



(i) I, Jeffrey W. Austin, Professional Land Surveyor No. S-1885, hereby certify that the corner location on this record was determined by me or under my direction and control and that this U.S. Public Land Survey Monument Record is correct and complete to the best of my knowledge and belief.


 Signature

13 DEC 2018
 Date