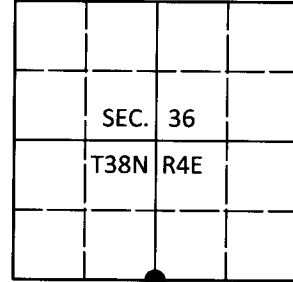


U.S. PUBLIC LAND SURVEY MONUMENT RECORD

Note: This form is intended and designed to fulfill all requirements of Wisconsin Administrative Code, Chapter A-E 7.08 U.S. Public Land Survey Monument Record (3)(a-l).

(a) CORNER LOCATION
 1/4 Cor. of Secs. 1 & 36
 Township 37 & 38 North
 Range 4 East of the 4th P.M.
 Town of Minocqua/Lynne
 County of Oneida

WISCRS - Oneida County
 N: 199,360.95 USft
 E: 131,138.54 USft
 Datum: NAD 83(2011)
 GNSS Method: Real-Time Network
 GNSS Control: WISCORS VRS



(b) HISTORY OF ORIGINAL CORNER ESTABLISHMENT

Original Surveyor: Alexander Anderson

Original Accessories:

Date of Survey Commenced: July, 1864
 Completed: July, 1864

Cedar 12 N38°E, 5 lks.
 Spruce 6 S52°W, 20 lks.

(b)(f)(g)(h) Description of monument found at this corner and if it was accepted, state all evidence (material, testimonial, occupational, plats, records, other monuments) used as a basis for accepting. If not accepted or if nothing was found, state evidence used as basis for establishing location. If re-established through lost corner proportionate methods, indicate all monuments, distances and directions used to establish. Indicate type of monument and sign post found or set.

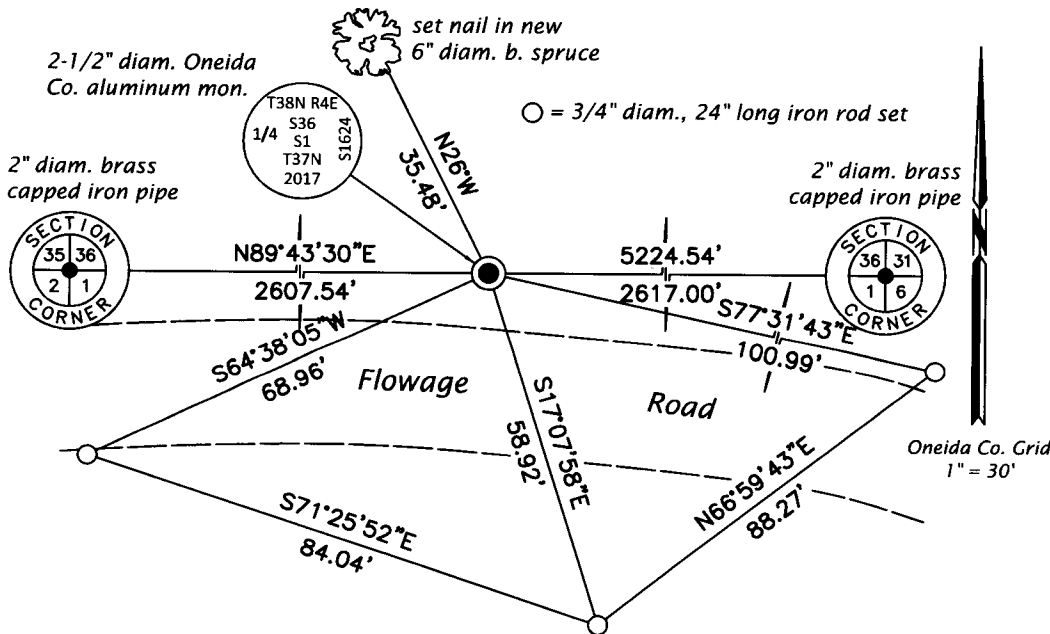
October 8, 1935: Notes by Hall in CCC book 4 on page 104 indicate he set a county monument and marked a bearing tree: cedar 5 N34°W, 15.7'

1953: Map (NEPCO 2-63) indicates corner is an "orig. 1/4 cor." with a distance East to the township corner of 2617.0'

May 30, 2017: Jeff Austin recovered a 2-1/2" diam., 42" long iron pipe with brass cap lying flat, 1 foot deep. He also searched and was unable to recover Hall's bearing tree or a monument at the East 1/16th cor. The corner was positioned on the section line using the NEPCO distance from the township corner. At the corner point, a 2-1/2" diam., 30" long aluminum pipe with a 3-1/4" diam. Oneida Co. aluminum cap projecting 2" above the ground surface was set. Accessories were established as shown below. A white vinyl sign post was set South, 0.6 ft.

The coordinate value shown has been verified by at least one of the following methods: 1) comparison to a previously GPS determined published value; 2) the value is the average of two or more GPS observations at a markedly different time; 3) one or more distances were measured back to the GPS observed corner from temporary GPS observed offset locations.

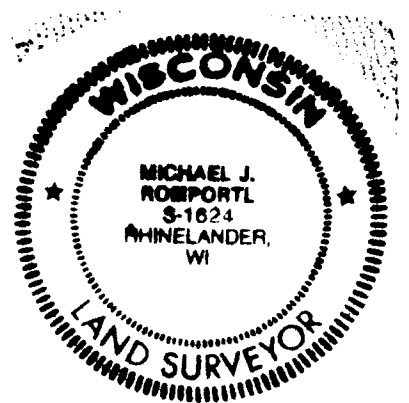
(c)(d)(e) Plan view of corner with ties to at least 4 witness monuments. If in disagreement with previously established corner, show the distances between the two corners and also indicate the ties to the disputed.



REGISTER OF DEEDS OFFICE
 ONEIDA COUNTY
 FILED

JUL 11 2017

AT _____ O'CLOCK _____ M
 KYLE J. FRANSON
 REGISTER OF DEEDS



(i) I, Michael J. Romportl, Professional Land Surveyor No. S-1624, hereby certify that the corner location on this record was determined by me or under my direction and control and that this U.S. Public Land Survey Monument Record is correct and complete to the best of my knowledge and belief.

Michael J Romportl
 Signature

7/11/2017
 Date