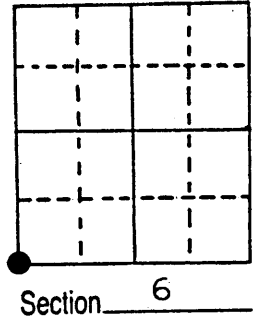


# U.S. PUBLIC LAND SURVEY MONUMENT RECORD

Note: This form is intended and designed to fulfill all requirements of Wisconsin Administrative Code, Chapter A-E 5.02, U.S. Public Land Survey Monument Record (3) (a) (b) (c) (d) (e) (f) (g) (h) (i). An additional sheet may be added if necessary to conform with said requirements.

(a) Corner location: Township 38 North  
 Range 6 East/West  
 Town/City/Village HAZELHURST  
 County ONEIDA



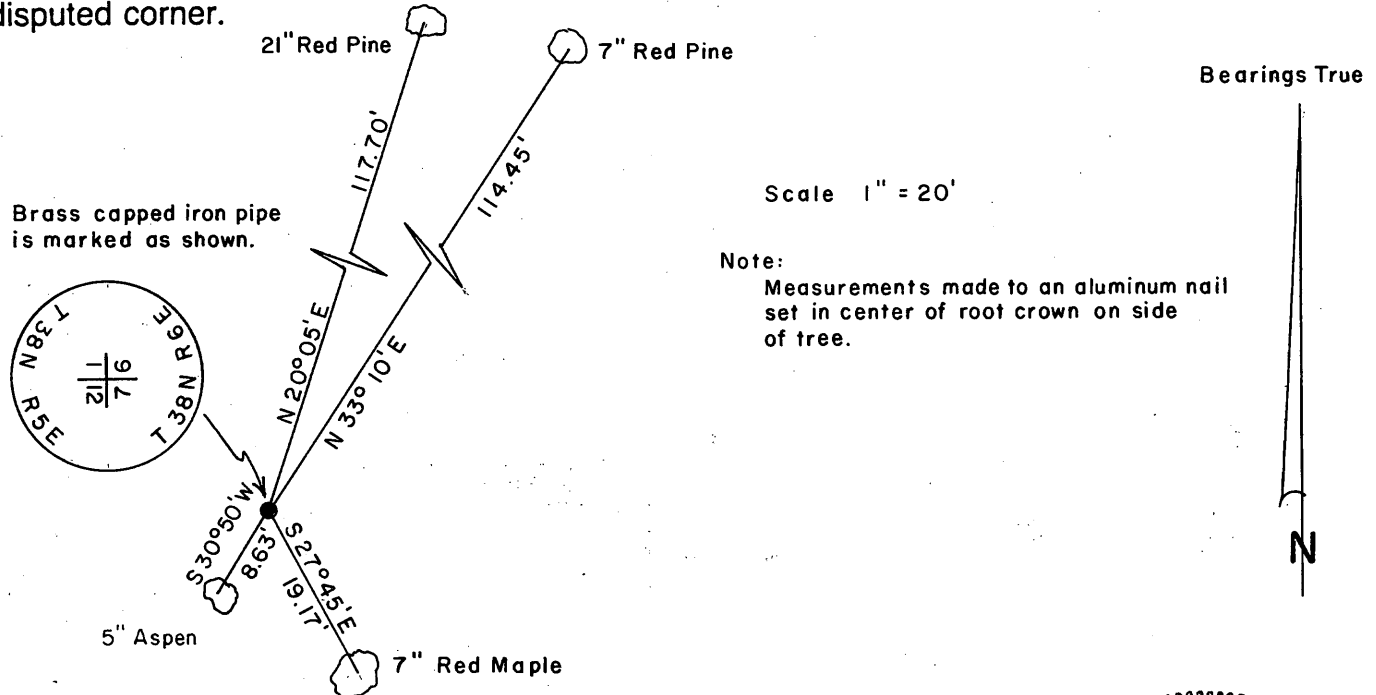
(b) (f) (g) (h) Description of monument found at this corner and if it was accepted, state all evidence (material, testimonial, occupational, plats, records, other monuments) used as a basis for accepting. If not accepted or if nothing was found, state evidence used as basis for establishing location. If reestablished through lost corner proportionate methods, indicate all monuments, distances and directions used to establish.

Sept. 1860- Alfred Millard, Deputy Surveyor - Set post corner of Sec. 1, 6, 7 and 12. Original bearing trees:  
 Y. Pine 10" S10°W, 105 lks.  
 Y. Pine 10" S77½°E, 31 lks.  
 Y. Pine 12" N67½°E, 102 lks.

Oct. 23 1933- Ray H. Hall, Deputy County Surveyor - Identify corner by old post hole agreeing as near as possible with stumps of 3 original bearings. Originals, S82°E, .313 ch; N62°-50'E, .993 ch; S8°W, 1.011 ch. Drive new Tamarack post and remark originals.

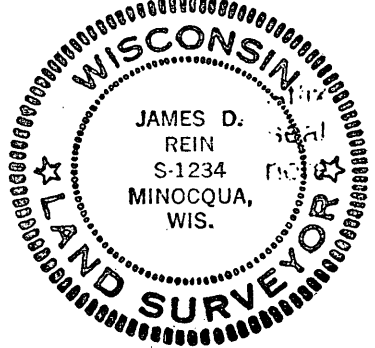
Dec. 11 1984- James D. Rein, RLS - Found 1 7/9" O.D. iron pipe with brass cap marked to identify corner. Remains of original bearing trees:  
 18" Red Pine stp. S8°W, 67.0 feet; 22" Red Pine stp. S80°E, 21.2 feet; 17" Red Pine stp. N63°E, 66.0 feet.  
 Made new bearing trees as shown below in plan view.

(c) (d) (e) Plan view of corner with ties to at least 4 witness monuments. If in disagreement with previously established corner, show the distances between the two corners and also indicate the ties to the disputed corner.



(i) I, JAMES D. REIN, Reg. Land Surveyor No. S-1234  
 (type or print name) certify that the corner location on this record was determined by me or under my direction and control and that this U.S. Public Land Survey Monument Record is correct and complete to the best of my knowledge and belief.

James D Rein Signature      Jan. 31st, 1985 Date



3805010000

Index No. E-1

Stock No. 26273

REGISTER OF DEEDS OFFICE  
ONEIDA COUNTY, WIS.  
JUL 1 1 1986  
A... 8:00 O'clock... M  
DORIS VERAGE KUEHN  
REGISTER OF DEEDS