

JAN 12 2023

KYLE J. FRANSON  
REGISTER OF DEEDS

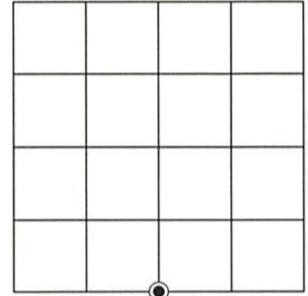
U.S. PUBLIC LAND SURVEY MONUMENT RECORD

Note: This form is intended and designed to fulfill all requirements of the Wisconsin Administrative Code, Chapter A-E 7.08 U.S. Public Land Monument Record (3)(a)(b)(c)(d)(e)(f)(g)(h)(i). An additional sheet may be added if necessary to conform with said requirements.

(a) CORNER LOCATION: WISCRS - Oneida County  
 South Quarter Corner of Section 1 North: 225,418.635 USft  
 Township 38 North East: 163,056.499 USft  
 Range 5 East Datum: NAD 83(2011) ep. 2010.00  
 Town of Minocqua GNSS Method: RTN - Direct  
 County of Oneida GNSS Control: WISCRS VRS

(RECORDING AREA)

SECTION 1



(b) HISTORY OF ORIGINAL CORNER ESTABLISHMENT

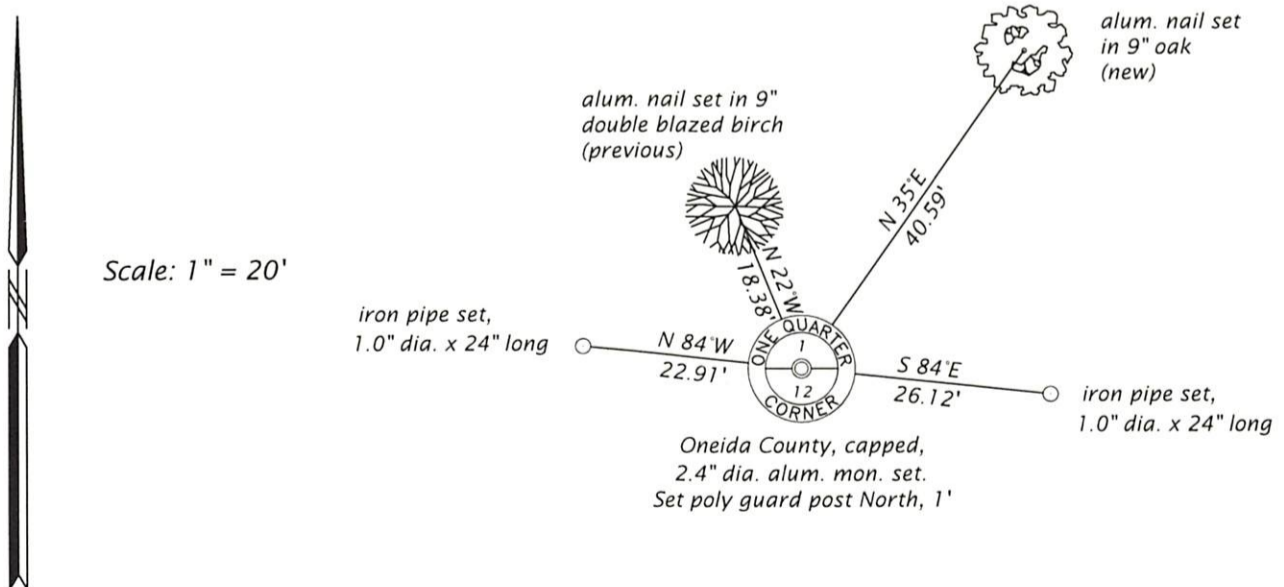
Original Surveyor: Alexanber Anderson, Deputy Surveyor  
 Date of Survey: Commenced October 6, 1863  
 Completed October 13, 1863  
 Original B.T.'S: Birch 7" N 77°W, 33 links  
 Spruce 6" S 57°W, 44 links

(f)(g)(h) DESCRIPTION OF MONUMENT FOUND AT THIS CORNER AND IF IT WAS ACCEPTED, STATE ALL EVIDENCE (MATERIAL, TESTIMONIAL, OCCUPATIONAL, PLATS, RECORD, OTHER MONUMENTS) USED AS A BASIS FOR ESTABLISHING LOCATION. IF NOT ACCEPTED OR IF NOTHING WAS FOUND, STATE EVIDENCE USED AS BASIS FOR ESTABLISHING LOCATION. IF REESTABLISHED THROUGH LOST CORNER PROPORTIONATE METHODS, INDICATE ALL MONUMENTS, DISTANCES AND DIRECTIONS USED TO ESTABLISH. INDICATE TYPE OF MONUMENT AND SIGN POST FOUND OR SET.

March 22, 1962 - NEPCO Book 2, page 80 map of Section 12, T38N, R5E. legends the N 1/4 corner monumented by an "Iron Pipe or Brass Cap". The west half on the north line common with Section 1 is shown S 88°48'E, 2649.8 feet. The east half of this line is shown as N84°54'E, 2712.0 feet.

July 15, 2021 - James D. Rein, PLS No. 1234, we recovered a 1 3/4" dia. iron pipe, top 1" below surface, a "T" fence post 6" above ground painted blue, bears S 52°W, 0.2', and a 4" square by 20" high old wood post sets along side. There are remains of an old north-south wire fence at the corner. We replaced the iron pipe with a capped 2.4" dia. aluminum monument and made reference ties to the corner as shown below in the plan.

(c)(d)(e) PLAN VIEW OF CORNER WITH TIES TO AT LEAST 4 WITNESS MONUMENTS. IF IN DISAGREEMENT WITH PREVIOUSLY ESTABLISHED CORNER, SHOW THE DISTANCE BETWEEN THE TWO CORNERS AND ALSO INDICATE THE TIES TO THE DISPUTED CORNER.



(i) I, JAMES D. REIN, PROFESSIONAL LAND SURVEYOR NO. S-1234 HEREBY CERTIFY THAT THE CORNER LOCATION ON THIS RECORD WAS DETERMINED BY ME OR UNDER MY DIRECTION AND CONTROL AND THAT THIS U.S. PUBLIC LAND SURVEY MONUMENT RECORD IS CORRECT AND COMPLETE TO THE BEST OF MY KNOWLEDGE AND BELIEF.

*James D. Rein*  
 SIGNATURE

12/05/22  
 DATE



INDEX NO. E-23  
 3805010020