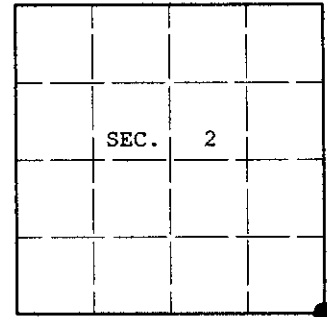


U.S. PUBLIC LAND SURVEY MONUMENT RECORD

Note: This form is intended and designed to fulfill all requirements of Wisconsin Administrative Code, Chapter A-E 7.08 U.S. Public Land Survey Monument Record (3) (a) (b) (c) (d) (e) (f) (g) (h) (i). An additional sheet may be added if necessary to conform with said requirements.

(a) CORNER LOCATION:
 Corner common to Secs. 1, 2, 11 and 12
 Township 38 North
 Range 5 East, 4th Principal Meridian
 Town of Minocqua

Plane Coordinates
 X:
 Y:
 Datum:
 County of Oneida



(b) HISTORY OF ORIGINAL CORNER ESTABLISHMENT

Original Surveyor: Alexander Anderson
 Date of Survey: Commenced: Oct. 6, 1863
 Completed: Oct. 13, 1863

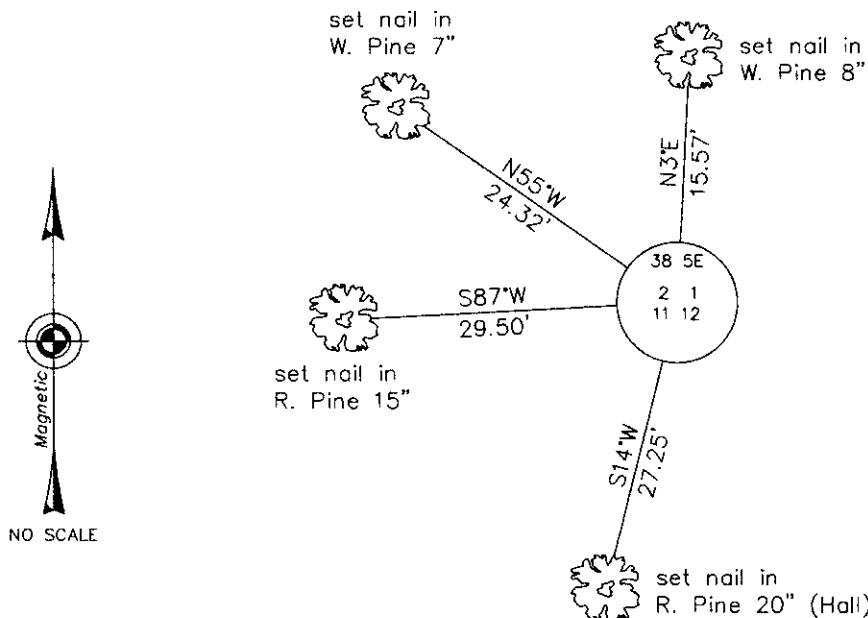
Original Accessories:
 Y. Pine 6 N.48°E. 52 lks.
 Aspen 8 N.50°W. 36 lks.

(b) (f) (g) (h) Description of monument found at this corner and if it was accepted, state all evidence (material, testimonial, occupational, plats, records, other monuments) used as a basis for accepting. If not accepted or if nothing was found, state evidence used as basis for establishing location. If reestablished through lost corner proportionate methods, indicate all monuments, distances and directions used to establish. Indicate type of monument and sign post found or set.

June 26, 1934: Hall notes on page 174 "Had identified this cor. last summer by orig. Y.P. in NE cor. of state timber. We find this tree facing NE with a post about .60 NE of it. Conclude US deputy read compass wrong. Cannot find aspen. Re-adjust the corner location to be N.48°E. .52 from BT and mark: Y. Pine 14 S.14°06'W. .405 and Y. Pine 26 N.87°39'W. .278. Set Wis. conservation monument in place at corner."

June 23, 2003: I found and accepted an iron post, 2-1/2 ins. diam. with WCD brass cap 9 ins. above the ground and marked as shown below. I found Hall's westerly tree wind-thrown at record bearing and dist. I established accessories as shown below and set a plastic sign post North, 1 ft. dist.

(c) (d) (e) Plan view of corner with ties to at least 4 witness monuments. If in disagreement with previously established corner, show the distances between the two corners and also indicate the ties to the disputed.



(i) I, Jeffrey W. Austin, Registered Land Surveyor No. S-1885, hereby certify upon honor that the corner location on this record was determined by me or under my direction and control and that this U.S. Public Land Survey Monument Record is correct and complete to the best of my knowledge and belief.

Jeffrey W. Austin #S-1885

SEPT. 15, 2003
 Date



380502000