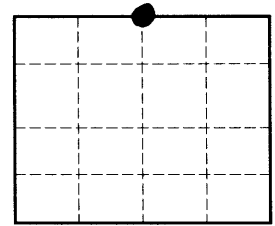


U. S. PUBLIC LAND SURVEY MONUMENT RECORD

Note: This form is intended and designed to fulfill all requirements of Wisconsin Administrative Code, Chapter A-E 7.08 U. S. Public Land Survey Monument Record (3) (a) (b) (c) (d) (e) (f) (h) (i). An additional sheet may be added if necessary to conform with said requirements.



Section 11

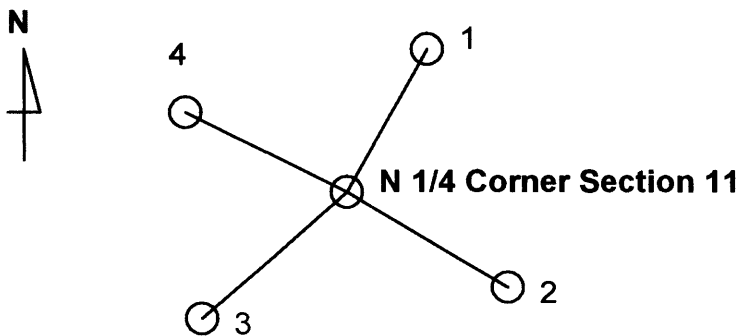
a) Corner location: **N 1/4 Corner, Section 11, Township 38 North, Range 5 East, Town of Minocqua, Oneida County, Wisconsin**

b) (f) (g) (h) Description of monument found at this corner and if it was accepted, state all evidence (material, testimonial, occupational, plats, records, other monuments) used as a basis for accepting. If not accepted or if nothing was found, state evidence used as basis for establishing location. If reestablished through lost corner proportionate methods, indicate all monuments, distances and directions used to establish type of monument found or set and sign post.

1. **Original corner set by Deputy U. S. Surveyor Alexander Anderson Oct. 1863: Wood Post : Bt's White Pine 14", N70°E, 41 lks (27.06') and Yellow Pine 12", S77°E, 27 lks (17.82').**
2. **John Fisher Map of Survey of August 22, 1979 shows a iron rod with pointed top marking the N 1/4 Corner of Section 11 (the South 1/4 of Section 12). Bearing trees: 7" Maple, S41°W, 9.8" and 10" Maple N61°W, 47.1'**

I find pointed iron rod (1/2 "x2"x21") called for in Fisher Map of Survey and Wisconsin Department of Natural Resources Guard Stake. Fisher Bt's gone. Set 2.4" x 30" Oneida County Aluminum Monument and Fiberglass Post. Monument set over iron rod. Monument stamped 1/4 S and S 11 and S 2 on proper side of monument.

c) (d) (e) Plan view of corner with ties to at least 4 witness monuments. If in disagreement with previously established corner, show the distances between the two corners and also indicate the ties to the disputed corner.



Accessory Number	Description	Bearing	Distance to Center of Accessory (* to nail at base of tree)
1	8" Rock Maple	N26°E	*53.08'
2	1"x24" iron pipe	S29°-21'E	37.82
3	1"x24" iron pipe	S64°-06'W	36.15'
4	1"x24" iron pipe	N43°-06'W	39.98'

i) **I, John B. Margitan** certify that the corner location on this record was determined by me or under my direction and control and that this U. S. Public Land Survey Monument Record is correct and complete to the best of my knowledge and belief.

Signature John B. Margitan Date 3/8/2004

3805020020

61-3