

# U.S. PUBLIC LAND SURVEY MONUMENT RECORD

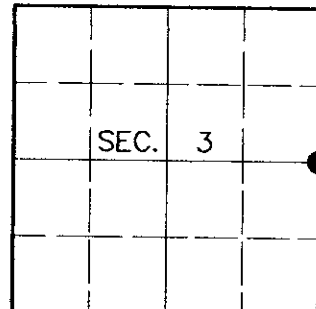
Note: This form is intended and designed to fulfill all requirements of Wisconsin Administrative Code, Chapter A-E 7.08, U.S. Public Land Survey Monument Record (3)(a)(b)(c)(d)(e)(f)(g)(h)(i). An additional sheet may be added if necessary to conform with said requirements.

**(a) CORNER LOCATION**

East 1/4 Corner of Section 3  
 Township 38 North  
 Range 5 East  
 Town of Minocqua

State Plane Coordinates

X  
 Y  
 Datum  
 County of Oneida



**(b) HISTORY OF ORIGINAL CORNER ESTABLISHMENT**

Original Surveyor: Alexander Anderson

Original Bearing Trees:

Date of Survey: Commenced Oct. 6, 1863  
 Completed Oct. 13, 1863

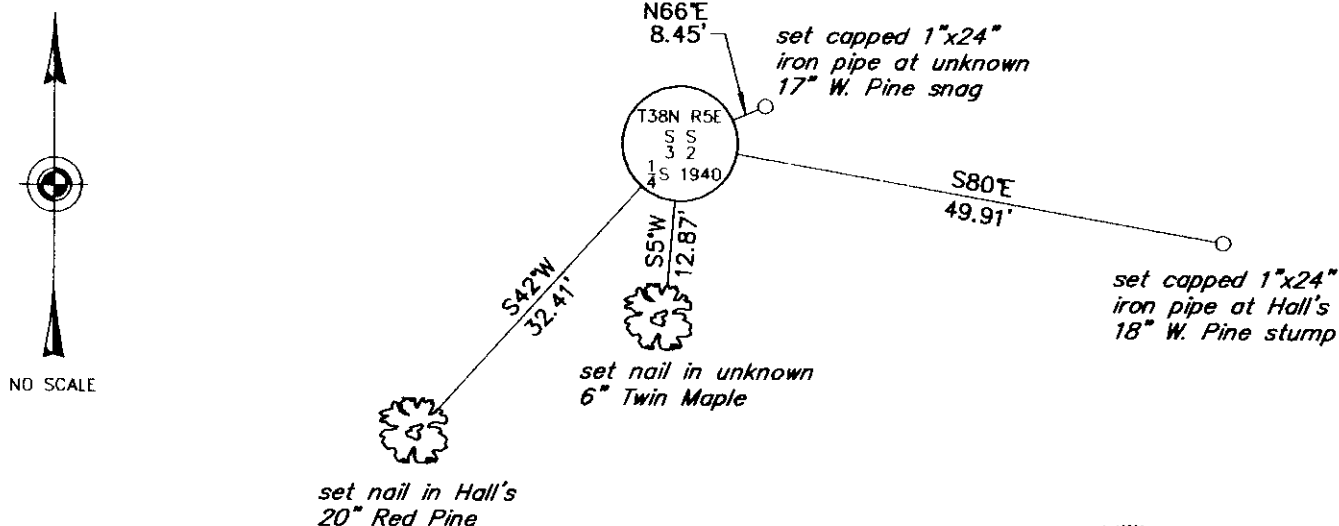
Birch 6 N27°W, 8 links  
 Birch 5 S33°E, 13 links

(b)(f)(g)(h) Description of monument found at this corner and if it was accepted, state all evidence (material, testimonial, occupational, plats, records, other monuments) used as a basis for accepting. If not accepted or if nothing was found, state evidence used as basis for establishing location. If reestablished through lost corner proportionate methods, indicate all monuments, distances and directions used to establish. Indicate type of monument and sign post found or set.

July 10, 1933: As detailed on page 163 of Hall's notes, Ray Hall indicates at 34.29 found 2 old posts (down) and 2 squared W. Pines. Fail to find Birches to fit notes but there are many here. Am satisfied this is the corner D.H. Vaughan found in 1903 at which time he found evidence. Corner stands on ridge E-W. Drive new pine post & mark: Y. Pine 8" S37°W, .485; W. Pine 6" S86°E, .764.

September 7, 2000: I found and accepted a 2-1/2" dia. iron pipe with 2-1/2" dia. brass cap 12" above grade and marked as shown below. The monument is surrounded by a rock cairn and lies on the top of a distinct ridge that bears S45°W and N50°E. I established accessories as shown below and set a plastic sign post Northwest, 1 foot.

(c)(d)(e) Plan view of corner with ties to at least 4 witness monuments. If in disagreement with previously established corner, show the distances between the two corners and also indicate the ties to the disputed corner.



(i) I, Jeffrey W. Austin, Registered Land Surveyor S-1885, hereby certify that the corner location on this record was determined by me or under my direction and control and that this U.S. Public Land Survey Monument Record is correct and complete to the best of my knowledge and belief.

Signature: [Handwritten Signature] Date: 1-23-2001



INDEX NO. C-17

3805632000