

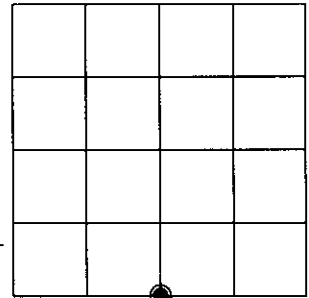
U.S. PUBLIC LAND SURVEY MONUMENT RECORD

Note: This form is intended and designed to fulfill all requirements of Wisconsin Administrative Code, Chapter A-E 7.08 U.S. Public Land Survey Monument Record (3)(a)(b)(c)(d)(e)(f)(g)(h)(i). An additional sheet may be added if necessary to conform with said requirements.

(a) CORNER LOCATION:

S 1/4 corner of Sec. 4
 Township 38 North
 Range 5 East
 Town/City/Village Minocqua
 County of Oneida

Oneida County Coordinates
 North 225669.2583
 East 147238.6807
 Control Station # 278 S
 Latitude 45°48'31.23574"N
 Longitude 89°51'31.13730"W
 Datum NAD-83, '91 Method Offset
 from RTK control



(b) HISTORY OF ORIGINAL CORNER ESTABLISHMENT

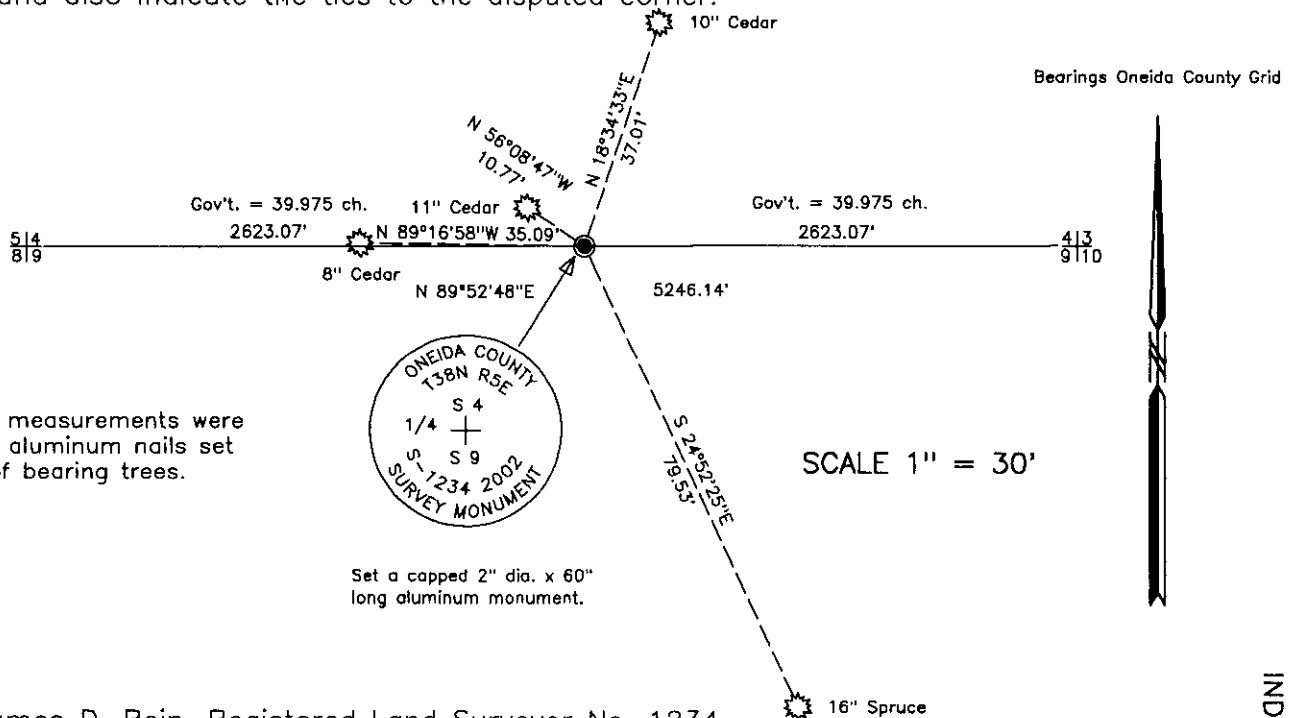
Original Surveyor: Alexander Anderson Original B.T.'S SECTION 4
 Date of Survey: Commenced Oct. 6, 1863 Cedar 8" N 10°E, 6 lks.
 Completed Oct. 13, 1863 Tamarac 9" S 10°W, 12 lks.

(f)(g)(h) Description of monument found at this corner and if it was accepted, state all evidence (material, testimonial, occupational, plats, records, other monuments) used as a basis for establishing location. If not accepted or if nothing was found, state evidence used as basis for establishing location. If reestablished through lost corner proportionate methods, indicate all monuments, distances and directions used to establish. Indicate type of monument and sign post found or set.

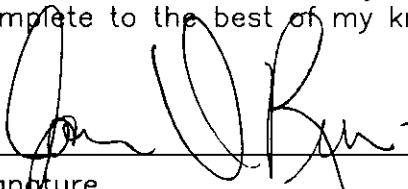
December 21, 1933 – R. H. Hall, Oneida County survey record: Survey of Swamsauger Fire Lane notes that 1/4 cor should be _____ W. in swamp, however the notes fail to show he recovered it.

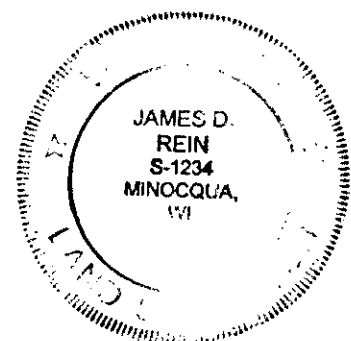
December 11, 2002 – James D. Rein, R.L.S. No. 1234: I am unable to recover any physical evidence of the original corner, or any record for the perpetuation of this corner. Thus I re-establish the corner by single proportionate position between the section corners with a capped 2" dia. x 60" long flange bottom aluminum monument. We also set a county stake along side of the monument and made reference ties as shown in the plan view. The corner is located in a cedar swamp approximately 260 feet west of the Kennedy Fire Lane.

(c)(d)(e) Plan view of corner with ties to at least 4 witness monuments. If in disagreement with previously established corner, show the distance between the two corners and also indicate the ties to the disputed corner.



(i) I, James D. Rein, Registered Land Surveyor No. 1234, hereby certify that the corner location on this record was determined by me or under my direction and control and that this U.S. Public Land Survey Monument Record is correct and complete to the best of my knowledge and belief.

 January 17, 2003
 Signature Date



INDEX NO. E 11

3805040020