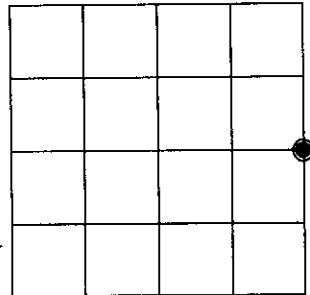


U.S. PUBLIC LAND SURVEY MONUMENT RECORD

Note: This form is intended and designed to fulfill all requirements of Wisconsin Administrative Code, Chapter A-E 7.08 U.S. Public Land Survey Monument Record (3)(a)(b)(c)(d)(e)(f)(g)(h)(i). An additional sheet may be added if necessary to conform with said requirements.

(a) CORNER LOCATION: Oneida County Coordinates
E 1/4 corner of Sec. 4
 Township 38 North
 Range 5 East
 Town/~~XXX~~ Range Minocqua
 County of Oneida

North 228290.5592
 East 149844.1698
 Control Station # 278 S
 Latitude 45°48'31.23574"N
 Longitude 89°51'31.13730"W
 Datum NAD-83,91 Method Set by
RTK direct



(b) HISTORY OF ORIGINAL CORNER ESTABLISHMENT

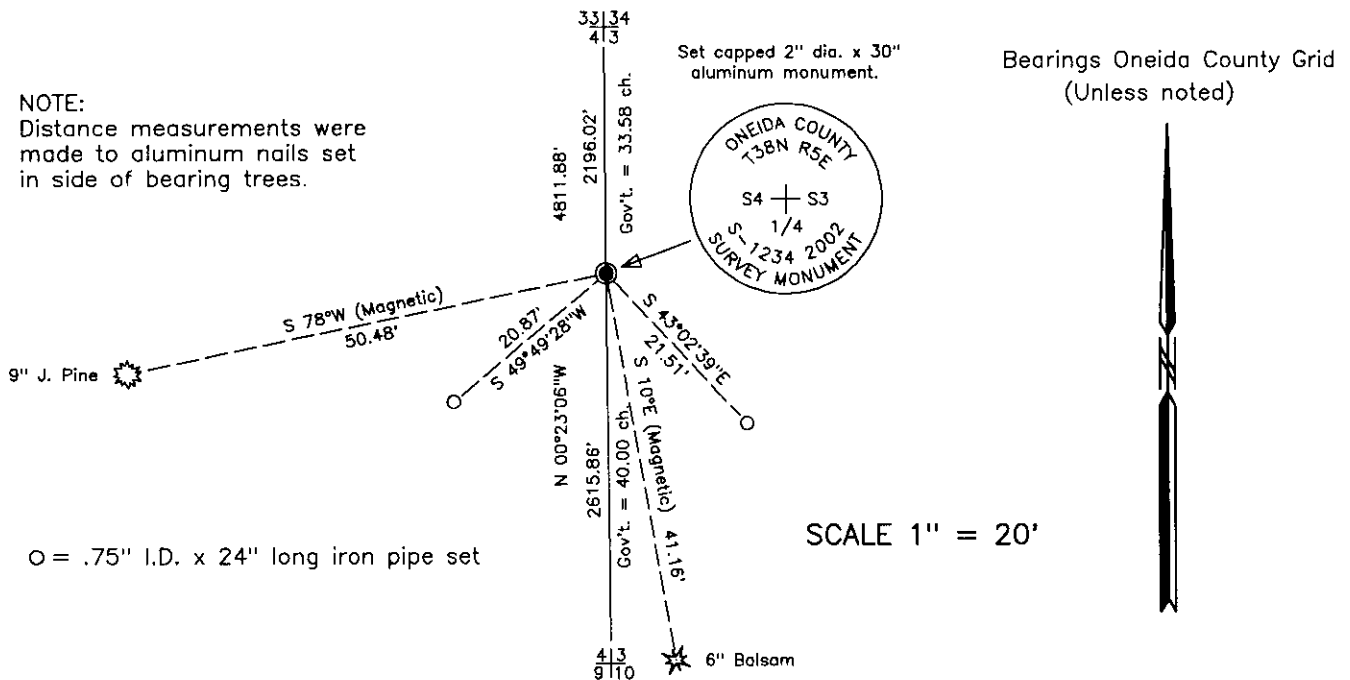
Original Surveyor: Alexander Anderson Original B.T.'S SECTION 4
 Date of Survey: Commenced Oct. 6, 1863 Birch 10" N 28°W, 4 lks.
 Completed Oct. 13, 1863 Birch 9" S 80°E, 5 lks.

(f)(g)(h) Description of monument found at this corner and if it was accepted, state all evidence (material, testimonial, occupational, plats, records, other monuments) used as a basis for establishing location. If not accepted or if nothing was found, state evidence used as basis for establishing location. If reestablished through lost corner proportionate methods, indicate all monuments, distances and directions used to establish. Indicate type of monument and sign post found or set.

May 1, 1934 - R. H. Hall, Oneida County survey record: East line of Sec. 4, approximate for planting. Triangulated S. from Orig. NE. corner, 12.59 chains. Transit unto line with old blaze near E 1/4 location, 13.58 ch. S of NE x set pine picket for temp 1/8. Thence Sly again on same line, 20.00 temp E 1/4, 20.10 3/4 ch. to old blazed stub.

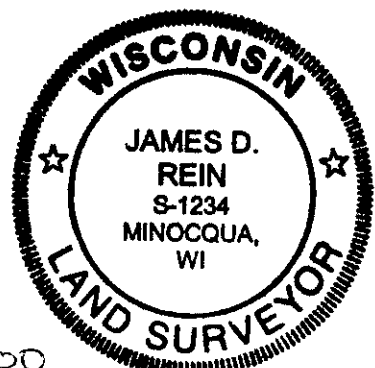
December 11, 2002 - James D. Rein, R.L.S. No. 1234, I am unable to recover any physical evidence of the original corner, or any record for the perpetuation of this corner. Corner position is located in a recent timber slash area. Thus I re-establish the corner by single proportionate measurement between the section corners with a capped 2" dia. x 30" long flange bottom aluminum monument. We also set a plastic county stake and made reference ties as shown in the plan view.

(c)(d)(e) Plan view of corner with ties to at least 4 witness monuments. If in disagreement with previously established corner, show the distance between the two corners and also indicate the ties to the disputed corner.



(i) I, James D. Rein, Registered Land Surveyor No. 1234, hereby certify that the corner location on this record was determined by me or under my direction and control and that this U.S. Public Land Survey Monument Record is correct and complete to the best of my knowledge and belief.

[Signature] January 17, 2002
 Signature Date



INDEX NO. C 13

3805042000