

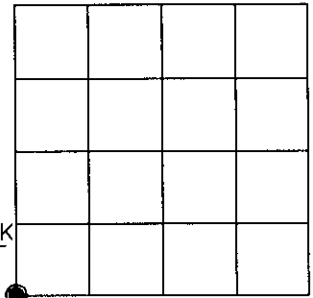
U.S. PUBLIC LAND SURVEY MONUMENT RECORD

Note: This form is intended and designed to fulfill all requirements of Wisconsin Administrative Code, Chapter A-E 7.08 U.S. Public Land Survey Monument Record (3)(a)(b)(c)(d)(e)(f)(g)(h)(i). An additional sheet may be added if necessary to conform with said requirements.

(a) CORNER LOCATION:

Southwest corner of Sec. 4
 Township 38 North
 Range 5 East
 Town/~~City/Village~~ Minocqua
 County of Oneida

Oneida County Coordinates
 North 225663.7614
 East 144615.6168
 Control Station # 278 S
 Latitude 45°48'31.23574"N
 Longitude 89°51'31.13730"W
 Datum NAD-83,'91 Method Direct-RTK



(b) HISTORY OF ORIGINAL CORNER ESTABLISHMENT

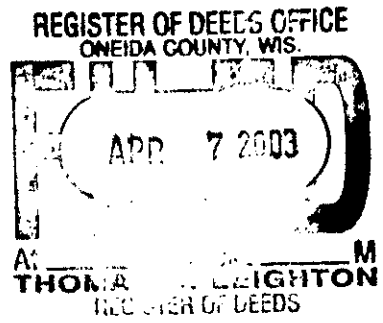
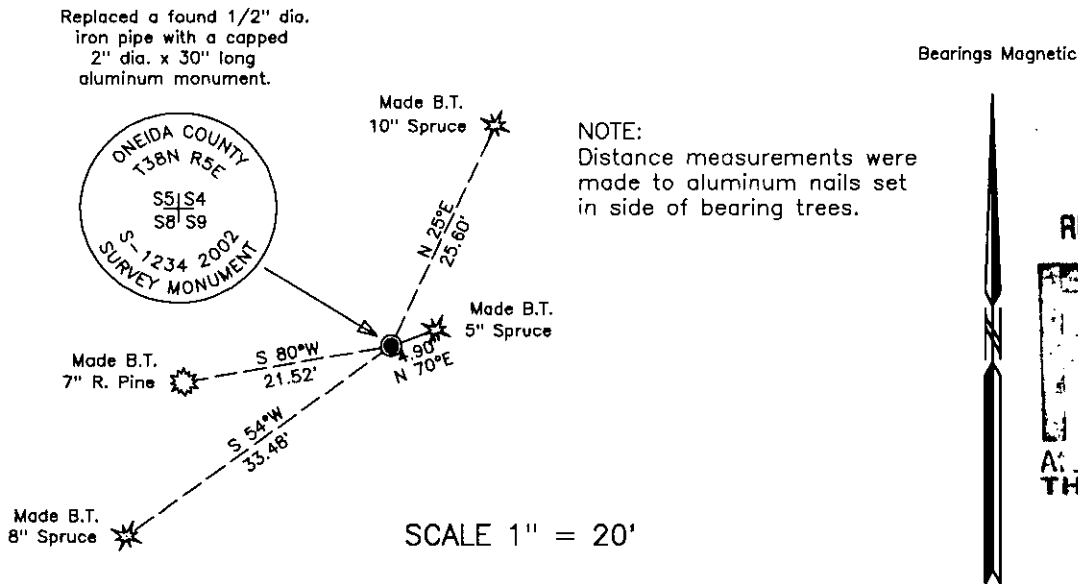
Original Surveyor: Alexander Anderson Original B.T.'S SECTION 4
 Date of Survey: Commenced Oct. 6, 1863 Spruce 9" N 45°E, 19 lks.
 Completed Oct. 13, 1863 Tam. 10" S 73°E, 7 lks.

(f)(g)(h) Description of monument found at this corner and if it was accepted, state all evidence (material, testimonial, occupational, plats, records, other monuments) used as a basis for establishing location. If not accepted or if nothing was found, state evidence used as basis for establishing location. If reestablished through lost corner proportionate methods, indicate all monuments, distances and directions used to establish. Indicate type of monument and sign post found or set.
 July 1, 1933 - Dan Jossart & R.H. Hall, Oneida County survey record: Fail to identify orig cor. Sec. 4-5-8-9, but can determine probable vicinity of cor. by shape of pond. Notes must be in error about matter of dist. West from cor. to hard land. Rec.= 5.00 ch. (actual about .50).

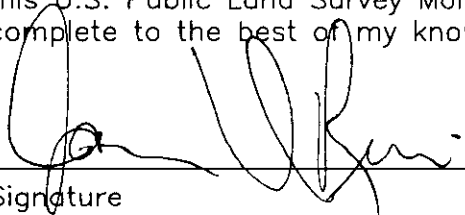
March 23, 1960 - B. Stuth & K. Voyt, Surveyors for NEPCO, identify corner as being a sq. scribed cedar wood corner post set 36" above ground.

November 12, 2002 - James D. Rein, R.L.S. No. 1234: Recovered 1/2 in. dia. iron pipe driven adjacent to the north edge of a 5" square scribed cedar post near the westerly edge of a broken swamp. Although I am unable to recover any original evidence of this corner, I accept the iron pipe as the best evidence by common report. This position has been used by NEPCO for surveys in Section 8 and is harmonious with other recovered corners. I replace the iron pipe with a capped 2" dia. x 36" long flange bottom aluminum monument. We reset the cedar post 1.5 feet northwest and a plastic county stake 1.2 feet southeast of the corner. We made new bearing trees as shown in the plan view.

(c)(d)(e) Plan view of corner with ties to at least 4 witness monuments. If in disagreement with previously established corner, show the distance between the two corners and also indicate the ties to the disputed corner.



(i) I, James D. Rein, Registered Land Surveyor No. 1234, hereby certify that the corner location on this record was determined by me or under my direction and control and that this U.S. Public Land Survey Monument Record is correct and complete to the best of my knowledge and belief.

 January 17, 2003
 Signature Date



INDEX NO. E 9

3805050000