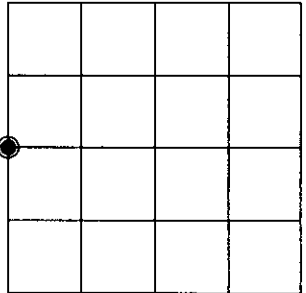


U.S. PUBLIC LAND SURVEY MONUMENT RECORD

Note: This form is intended and designed to fulfill all requirements of Wisconsin Administrative Code, Chapter A-E 7.08 U.S. Public Land Survey Monument Record (3)(a)(b)(c)(d)(e)(f)(g)(h)(i). An additional sheet may be added if necessary to conform with said requirements.

(a) CORNER LOCATION: Oneida County Coordinates
W 1/4 corner of Sec. 4
 Township 38 North
 Range 5 East
 Town/~~City/Village~~ Minocqua
 County of Oneida
 North 228291.5790
 East 144570.4361
 Control Station # 278 S
 Latitude 45°48'31.23574"N
 Longitude 89°51'31.13730"W
 Datum NAD-83, '91 Method Offset
 from RTK control



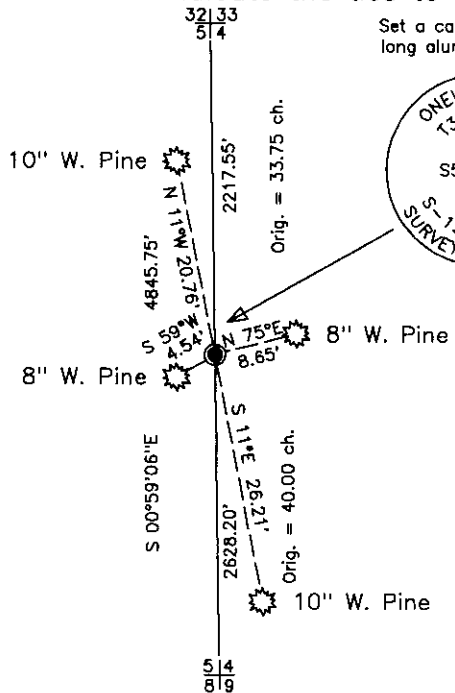
(b) HISTORY OF ORIGINAL CORNER ESTABLISHMENT
 Original Surveyor: Alexander Anderson Original B.T.'S SECTION 4
 Date of Survey: Commenced Oct. 6, 1863 Aspen 10" N 32°W, 19 lks.
 Completed Oct. 13, 1863 Maple 10" N 74°E, 4 lks.

(f)(g)(h) Description of monument found at this corner and if it was accepted, state all evidence (material, testimonial, occupational, plats, records, other monuments) used as a basis for establishing location. If not accepted or if nothing was found, state evidence used as basis for establishing location. If reestablished through lost corner proportionate methods, indicate all monuments, distances and directions used to establish. Indicate type of monument and sign post found or set.

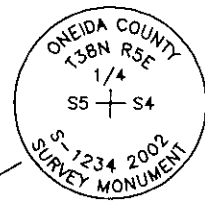
October 2, 1934 – K. H. Hall, Oneida County survey record: Record S. of Tp. line – fail to find 1/4 corner.

December 11, 2002 – James D. Rein, Reg. Land Surveyor No. 1234: Unable to find any physical evidence of the original corner, or any record for perpetuation of the original government corner. Thus we re-establish the corner by single proportionate measurement between the section corners, with a capped 2" dia. x 30" long flange bottom aluminum monument. We also place a plastic county stake along side of the corner monument and make new bearing tree ties as shown in plan.

(c)(d)(e) Plan view of corner with ties to at least 4 witness monuments. If in disagreement with previously established corner, show the distance between the two corners and also indicate the ties to the disputed corner.



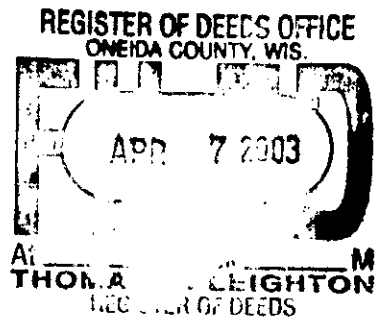
Set a capped 2" dia. x 30" long aluminum monument.



Section line bearings are Oneida County Grid.
 Bearing tree ties are Magnetic.

NOTE: Distance measurements were made to aluminum nails set in side of bearing trees.

SCALE 1" = 20'



(i) I, James D. Rein, Registered Land Surveyor No. 1234, hereby certify that the corner location on this record was determined by me or under my direction and control and that this U.S. Public Land Survey Monument Record is correct and complete to the best of my knowledge and belief.

[Signature] January 17, 2003
 Signature Date
 380505 2000



INDEX NO. C 9