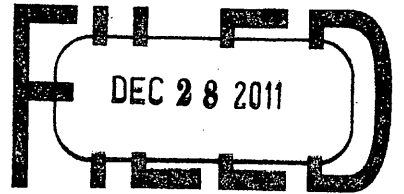


U.S. PUBLIC LAND SURVEY MONUMENT RECORD

Note: This form is intended and designed to fulfill all requirements of the Wisconsin Administrative Code, Chapter A-E 7.08 U.S. Public Land Monument Record (3)(a)(b)(c)(d)(e)(f)(g)(h)(i). An additional sheet may be added if necessary to conform with said requirements.

REGISTER OF DEEDS OFFICE
ONEIDA COUNTY, WIS.



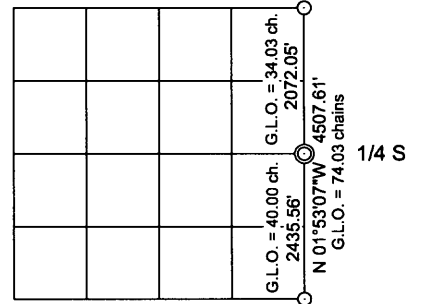
At _____ O'Clock _____ M
THOMAS H. LEIGHTON
REGISTER OF DEEDS

(a) CORNER LOCATION:
East 1/4 corner of Section 6
Township 38 North
Range 5 East
Town of Minocqua
County of Oneida

COORDINATES
North: 228492.224
East: 139297.125
Control Station: Oneida County GPS # 207
Latitude: 45°49'03.59887"
Longitude: 89°56'30.36164"
Datum: NAD-83, '91
Method: Offset traverse from GPS control

(RECORDING AREA)

SECTION 6



(b) HISTORY OF ORIGINAL CORNER ESTABLISHMENT

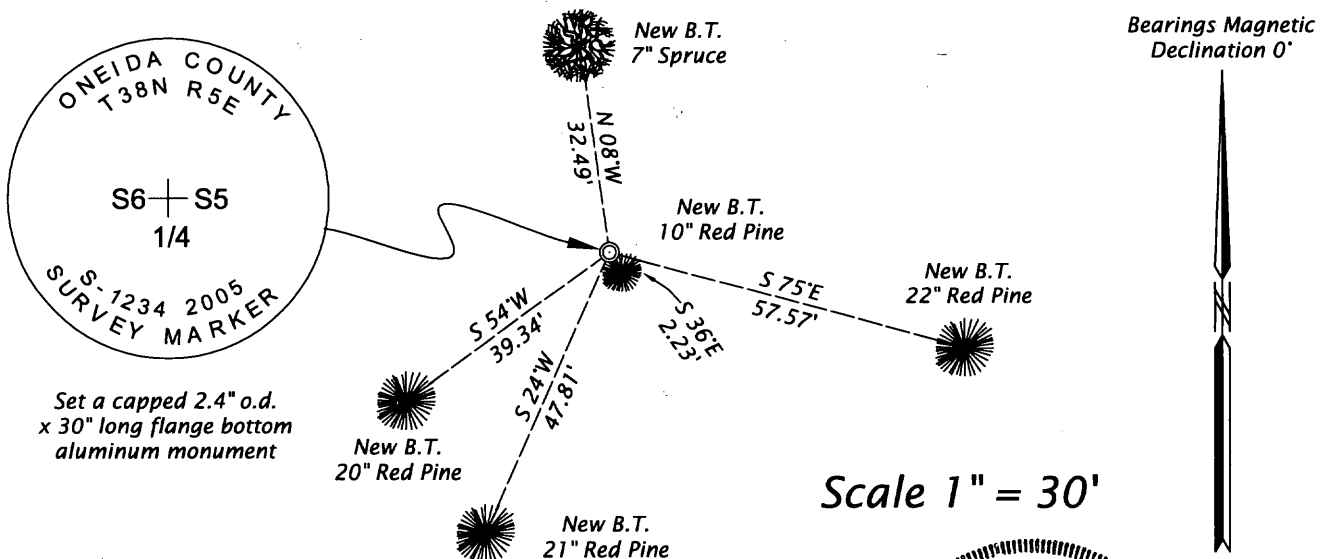
Original Surveyor: Alexander Anderson, Deputy Surveyor
Date of Survey: Commenced October 6, 1863
Completed October 13, 1863
Original B.T.'s: Spruce 5" S40°E, 58 links
Spruce 5" S 4°W, 77 links

(f)(g)(h) DESCRIPTION OF MONUMENT FOUND AT THIS CORNER AND IF IT WAS ACCEPTED, STATE ALL EVIDENCE (MATERIAL, TESTIMONIAL, OCCUPATIONAL, PLATS, RECORDS, OTHER MONUMENTS) USED AS A BASIS FOR ESTABLISHING LOCATION. IF NOT ACCEPTED OF IF NOTHING WAS FOUND, STATE EVIDENCE USED AS BASIS FOR ESTABLISHING LOCATION. IF REESTABLISHED THROUGH LOST CORNER PROPORTIONATE METHODS, INDICATE ALL MONUMENTS, DISTANCES AND DIRECTIONS USED TO ESTABLISH. INDICATE TYPE OF MONUMENT AND SIGN POST FOUND OR SET.

August 16, 1991 - William H. Stuth - R.L.S. No. 1418 - Map filed in the Oneida County Surveyor's Office as "C822" identifies corner position by single proportionate position with a statement that he is unable to monument the 1/4 corner due to high water.

December 15, 2005 - James D. Rein, RLS No. 1234 - We are unable to locate any original or subsequent evidence for this corner, thus we monument it by single proportionate measurement between the recovered northeast and southeast corner of Section 6 at a position shown in the section diagram. We monument the corner with a standard capped 2.4" o.d. x 30" long flange bottom aluminum monument. We also set a white poly stake adjacent to the corner monument and make ties to aluminum nails set in the side root crown of new bearing trees as shown in the plan below.

(c)(d)(e) PLAN VIEW OF CORNER WITH TIES TO AT LEAST 4 WITNESS MONUMENTS. IF IN DISAGREEMENT WITH PREVIOUSLY ESTABLISHED CORNER, SHOW THE DISTANCE BETWEEN THE TWO CORNERS AND ALSO INDICATE THE TIES TO THE DISPUTED CORNER.



(i) I, JAMES D. REIN, PROFESSIONAL LAND SURVEYOR NO. S-1234 HEREBY CERTIFY THAT THE CORNER LOCATION ON THIS RECORD WAS DETERMINED BY ME OR UNDER MY DIRECTION AND CONTROL AND THAT THIS U.S. PUBLIC LAND SURVEY MONUMENT RECORD IS CORRECT AND COMPLETE TO THE BEST OF MY KNOWLEDGE AND BELIEF.



3805062000

SIGNATURE

12-23-11

DATE

INDEX NO. C-5