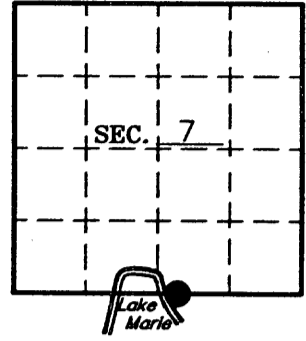


U. S. PUBLIC LAND SURVEY MONUMENT RECORD

Note: This form is intended and designed to fulfill all requirements of Wisconsin Administrative Code-Chapter A-E 7.08 U. S. Public Land Survey Monument Record (3)(a)(b)(c)(d)(e)(f)(g)(h)(i). An additional sheet may be added if necessary to conform with said requirements.

(a) CORNER LOCATION: State Plane Coordinates
 Wit. to S1/4 corner of Sec. 7 X ---
 Township 38 North Y ---
 Range 5 East Datum Base ---
 Town Minocqua County of Oneida



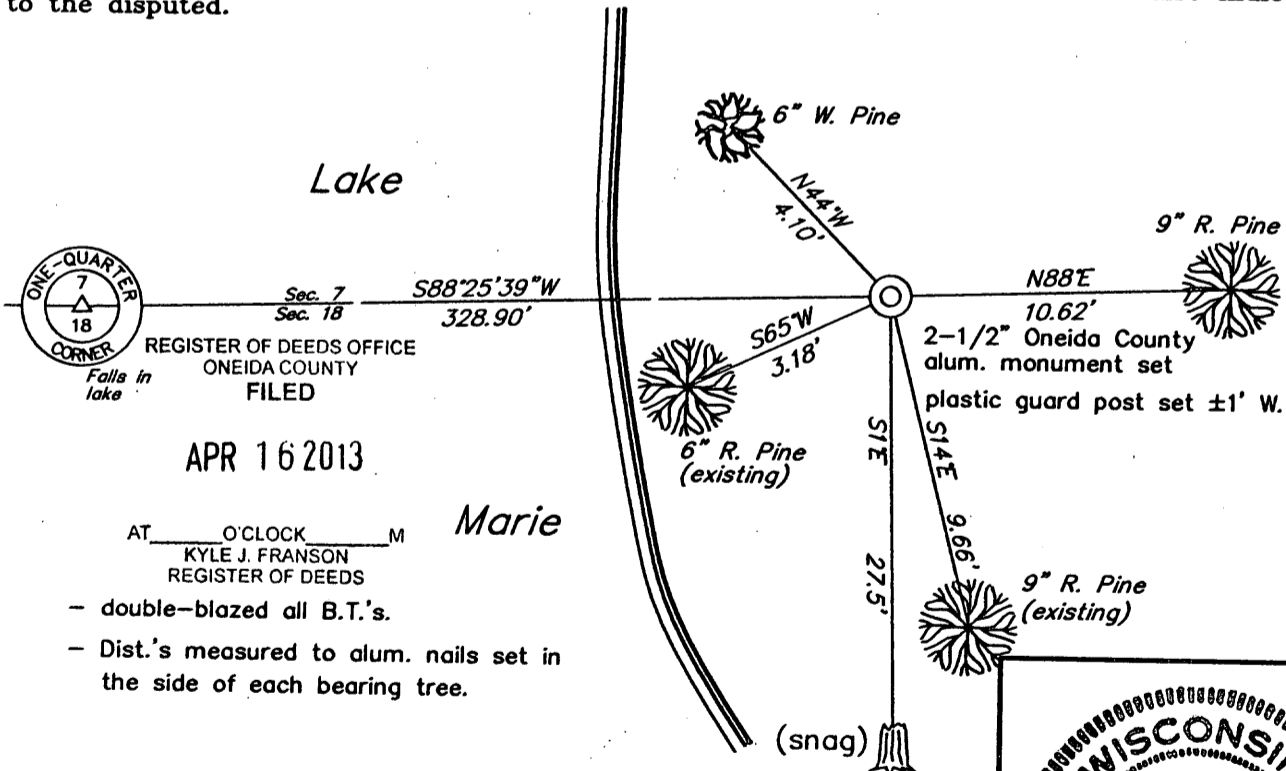
(b) HISTORY OF ORIGINAL CORNER ESTABLISHMENT:
 Original Surveyor: Alexander Anderson
 Date of Survey: Commenced Oct. 6, 1863
 Completed Oct. 13, 1863

Original B.T.'S
 Corner not set as part of U.S.P.L.S.S.

(b)(f)(g)(h) Description of monument found at this corner and if it was accepted—state all evidence (material—testimonial—occupation—plats—records—other monuments) used as a basis for accepting. If not accepted or if nothing was found state evidence used as basis for establishing location. If reestablished through lost corner proportionate methods indicate all monuments—distances and directions used to establish. Indicate type of monument and sign post found or set.

- 1974 – Northwoods Surveyors (John H. Fisher) set a 1-1/4" iron rod on the east shore of Lake Marie on the south line of Section 7 between the W1/16 Corner and the E1/16 Corner. This Meander Corner witnesses the S1/4 Corner which lies 328.9' West in Lake Marie. He made the following BT's: 6" Maple, N42°W, 14.2' and 11" W. Pine, S1°E, 27.5'.
- 2012 – I recovered and accepted Fisher's 1-1/4" iron rod as a witness to the S1/4, Sec. 7. I replaced said iron rod with a 2-1/2"-dia. Oneida County aluminum monument. See sketch below for ties:

(c)(d)(e) Plan view of corner with ties to at least 4 witness monuments. If in disagreement with previously established corner—show the distances between the two corners and also indicate the ties to the disputed.



APR 16 2013
 AT --- O'CLOCK --- M
 KYLE J. FRANSON
 REGISTER OF DEEDS
 - double-blazed all B.T.'s.
 - Dist.'s measured to alum. nails set in the side of each bearing tree.

(i) I Charles E. Winkler S-1431
 hereby certify that the corner location on this record was determined by me or under my direction and control and that this U.S. Public Land Survey Monument Record is correct and complete to the best of my knowledge and belief.

Charles E. Winkler 4/12/2013
 Signature Foltz and Associates, Inc. Date



INDEX NO. J-3-4

3805070018