

U.S. PUBLIC LAND SURVEY MONUMENT RECORD

REGISTER OF DEEDS OFFICE
ONEIDA COUNTY
FILED

JAN 16 2012

AT _____ O'CLOCK _____ M
THOMAS H. LEIGHTON
REGISTER OF DEEDS

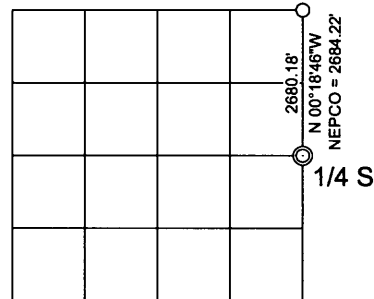
Note: This form is intended and designed to fulfill all requirements of the Wisconsin Administrative Code, Chapter A-E 7.08 U.S. Public Land Monument Record (3)(a)(b)(c)(d)(e)(f)(g)(h)(i). An additional sheet may be added if necessary to conform with said requirements.

(a) CORNER LOCATION:
East 1/4 corner of Section 7
Township 38 North
Range 5 East
Town of Minocqua
County of Oneida

COORDINATES
North: 223377.846
East: 139391.882
Control Station: Oneida County GPS # 207
Latitude: 45°49'03.59887"
Longitude: 89°56'30.36164"
Datum: NAD-83, '91
Method: Direct RTK GPS

(RECORDING AREA)

SECTION 7



(b) HISTORY OF ORIGINAL CORNER ESTABLISHMENT

Original Surveyor: Alexander Anderson, Deputy Surveyor
Date of Survey: Commenced October 6th, 1863
Completed October 13, 1865
Original B.T.'s: Tamarack 10" N 7°W, 10 links
Tamarack 8" N 42°E, 30 links

(f)(g)(h) DESCRIPTION OF MONUMENT FOUND AT THIS CORNER AND IF IT WAS ACCEPTED, STATE ALL

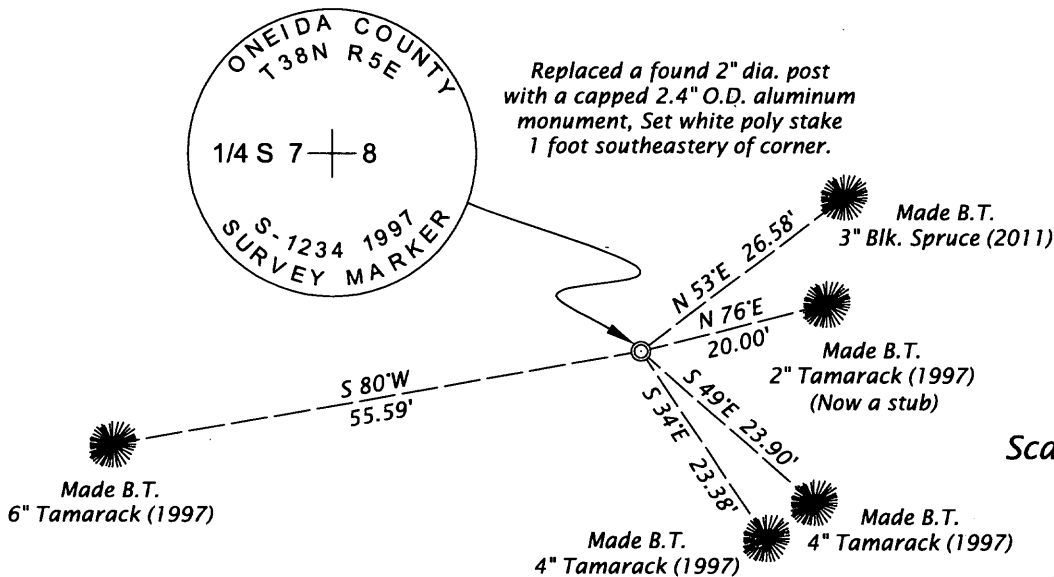
BASIS FOR ESTABLISHING LOCATION. IF NOT ACCEPTED OF IF NOTHING WAS FOUND, STATE EVIDENCE USED AS BASIS FOR ESTABLISHING LOCATION. IF REESTABLISHED THROUGH LOST CORNER PROPORTIONATE METHODS, INDICATE ALL MONUMENTS, DISTANCES AND DIRECTIONS USED TO ESTABLISH. INDICATE TYPE OF MONUMENT AND SIGN POST FOUND OR SET.

November 9, 1959 - February 15, 1960 - Nekoosa Edwards Paper Company survey map by K. Voyt - filed in NEPCO Book 2, page 74, in Oneida County Surveyor's Office, for Subdivision of Sections 7 and 8, T38N, R5E, legends this 1/4 corner as being monumented by "Sq. wood post set" by apparent single proportionate measurement.

July 17, 1997 - James D. Rein, R.L.S. No. 1234 - Field crew P. Totsch & A. Dallman recover 4" dia. square top post as described in the above Nekoosa Edwards Paper Company survey. I accept the post as marking the re-established corner by single proportionate measurement and we replace it with an Oneida County capped 2.4" o.d. x 60" long aluminum monument. We also set a white poly post 1 foot southeasterly of the corner monument and made reference ties to four new bearing trees as shown below in plan.

December 31, 2011 - James D. Rein, R.L.S. No. 1234 - I recover the monument as described above and make one new bearing tree to replace the previous northeast which is not a stub. I make measurements to new aluminum nails set in the center of the root crown on sides of the trees. I also make Direct RTK GPS observations on the corner monument.

(c)(d)(e) PLAN VIEW OF CORNER WITH TIES TO AT LEAST 4 WITNESS MONUMENTS. IF IN DISAGREEMENT WITH PREVIOUSLY ESTABLISHED CORNER, SHOW THE DISTANCE BETWEEN THE TWO CORNERS AND ALSO INDICATE THE TIES TO THE DISPUTED CORNER.



Bearings Magnetic
Declination 0'

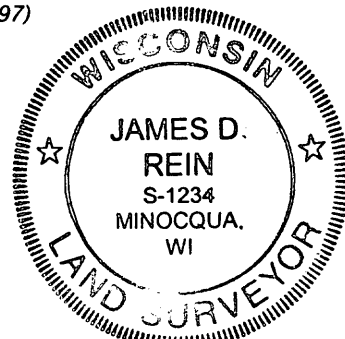
Scale 1" = 20'

(i) I, JAMES D. REIN, PROFESSIONAL LAND SURVEYOR NO. S-1234 HEREBY CERTIFY THAT THE CORNER LOCATION ON THIS RECORD WAS DETERMINED BY ME OR UNDER MY DIRECTION AND CONTROL AND THAT THIS U.S. PUBLIC LAND SURVEY MONUMENT RECORD IS CORRECT AND COMPLETE TO THE BEST OF MY KNOWLEDGE AND BELIEF.

SIGNATURE

DATE

JANUARY 6, 2012



INDEX NO. 65

3805072000