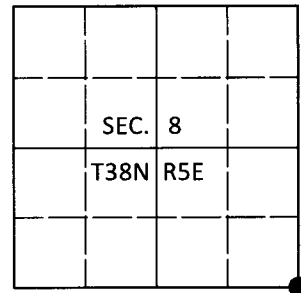


# U.S. PUBLIC LAND SURVEY MONUMENT RECORD

Note: This form is intended and designed to fulfill all requirements of Wisconsin Administrative Code, Chapter A-E 7.08 U.S. Public Land Survey Monument Record (3)(a-i).

(a) CORNER LOCATION  
 Cor. of Secs. 8, 9, 16 & 17  
 Township 38 North  
 Range 5 East of the 4th P.M.  
 Town of Minocqua  
 County of Oneida

WISCRS - Oneida County  
 N: 220,435.61 USft  
 E: 144,713.81 USft  
 Datum: NAD 83(2011)  
 GNSS Method: RTN - Direct  
 GNSS Control: WISCORS VRS



(b) HISTORY OF ORIGINAL CORNER ESTABLISHMENT

Original Surveyor: Alexander Anderson

Original Accessories:

Date of Survey      Commenced: Oct. 6, 1863  
    Completed: Oct. 13, 1863

Tamarack 9" S40°W, 69 lks.  
 Tamarack 7" N62°W, 62 lks.

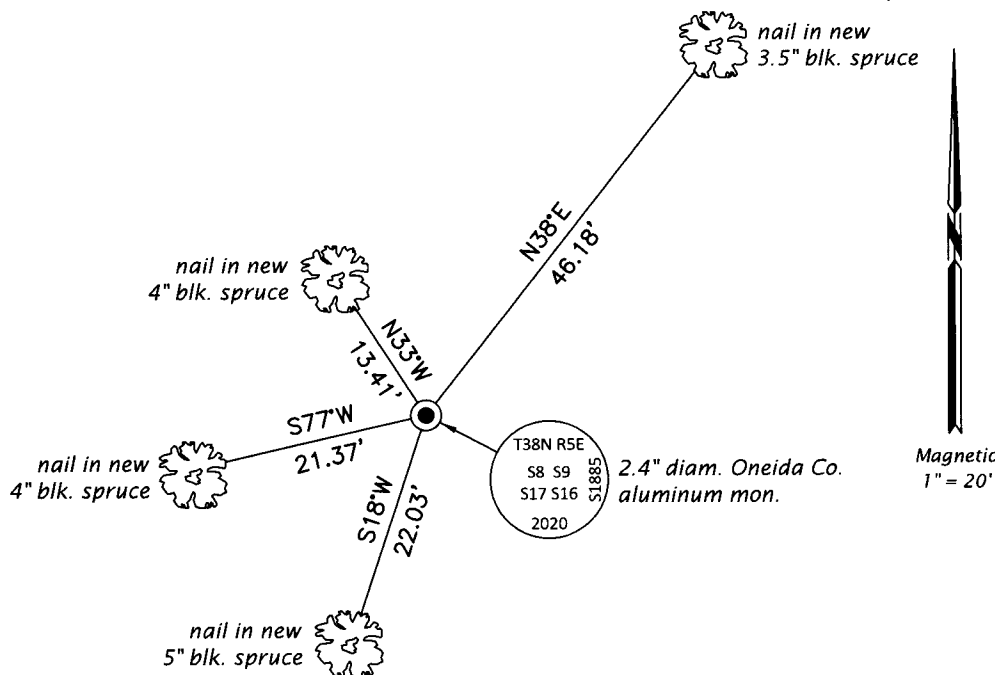
(b)(f)(g)(h) Description of monument found at this corner and if it was accepted, state all evidence (material, testimonial, occupational, plats, records, other monuments) used as a basis for accepting. If not accepted or if nothing was found, state evidence used as basis for establishing location. If re-established through lost corner proportionate methods, indicate all monuments, distances and directions used to establish. Indicate type of monument and sign post found or set.

*May 15, 1935: On page 80 of CCC book 4, Ray Hall's notes read: "Orig. SWx, identify same by stubs of both original tamarack bearing trees, marks in good shape. Intersect meas. from both. Point falls about 3" E. of 2' section of very old post under bog - may be point of original stake? Old bearings are adjacent to E. side of jack pine island. Drive jack pine post at intersect of record measure. Orig. N66°W, record; orig. S37°W, record; new jack 2" S16°E, .294; jack 6" N61°W, 1.128; jack 6" S41°W, .942."*

*May 5, 2020: I found and accepted the record monument, a 3.5" diam. wood post point by Hall. A 0.8" diam. rusted iron pipe was adjacent to the post point. I found the SW GLO tree tipped over at record location. I was unable to recover evidence of the other GLO tree. I found the following from Hall: jack pine stump scribed "S8 BT" N61°W, 74.5'; rotted jack pine stump S41°W, 62.2'; jack pine snag 4" (healed blaze) S16°E, 19.4'. In place of the post point, I set a 2.4" diam., 60" long aluminum pipe with a 3.3" diam. Oneida Co. aluminum cap flush with the bog surface. I found or established accessories as shown below. I set a white vinyl sign post bearing Northeast, 0.8 ft.*

*The coordinate value shown has been verified by at least one of the following methods: 1) comparison to a previously GPS determined published value; 2) the value is the average of two or more GPS observations at a markedly different time; 3) one or more distances were measured back to the GPS observed corner from temporary GPS observed offset locations.*

(c)(d)(e) Plan view of corner with ties to at least 4 witness monuments. If in disagreement with previously established corner, show the distances between the two corners and also indicate the ties to the disputed.

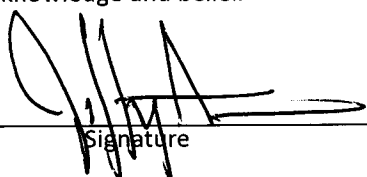


REGISTER OF DEEDS OFFICE  
 ONEIDA COUNTY  
 FILED

JUN 26 2020

KYLE J. FRANSON  
 REGISTER OF DEEDS

(i) I, Jeffrey W. Austin, Professional Land Surveyor No. S-1885, hereby certify that the corner location on this record was determined by me or under my direction and control and that this U.S. Public Land Survey Monument Record is correct and complete to the best of my knowledge and belief.

  
 Signature

JUNE 5, 2020  
 Date