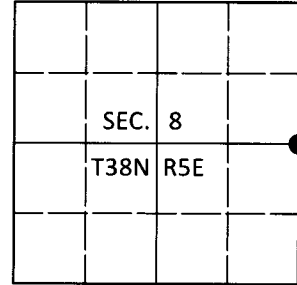


U.S. PUBLIC LAND SURVEY MONUMENT RECORD

Note: This form is intended and designed to fulfill all requirements of Wisconsin Administrative Code, Chapter A-E 7.08 U.S. Public Land Survey Monument Record (3)(a-i).

(a) CORNER LOCATION
 1/4 Cor. of Secs. 8 & 9
 Township 38 North
 Range 5 East of the 4th P.M.
 Town of Minocqua
 County of Oneida

WISCRS - Oneida County
 N: 223,042.89 USft
 E: 144,691.95 USft
 Datum: NAD 83(2011)
 GNSS Method: RTN - Direct
 GNSS Control: WISCORS VRS



(b) HISTORY OF ORIGINAL CORNER ESTABLISHMENT

Original Surveyor: Alexander Anderson

Original Accessories:

Date of Survey Commenced: Oct. 6, 1863
 Completed: Oct. 13, 1863

Hemlock 8" S54°E, 7 lks.
 Hemlock 10" N54°W, 5 lks.

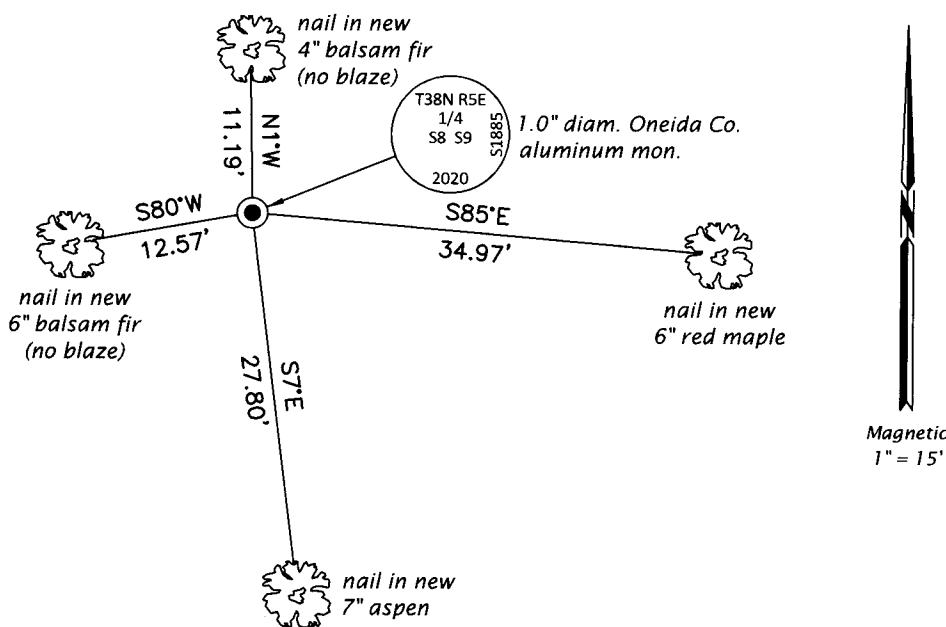
(b)(f)(g)(h) Description of monument found at this corner and if it was accepted, state all evidence (material, testimonial, occupational, plats, records, other monuments) used as a basis for accepting. If not accepted or if nothing was found, state evidence used as basis for establishing location. If re-established through lost corner proportionate methods, indicate all monuments, distances and directions used to establish. Indicate type of monument and sign post found or set.

Jul. 1, 1933: On page 161 of Hall book 1, Ray Hall's notes read: "Orig. 1/4 S cor. identified by stumps of both originals. Scribe marks visible on E. stump, good boxing on W. stump. Set pine post. Nothing near for bearings except: Birch stub 11" N66°W, 8.4 ft.; Swamp about N. 60 steps."

May 5, 2020: I found and accepted a perpetuation of the record monument, a 2.0" diam., 50" long bent iron pipe with a brass plumbing cap. The monument was quite high and about to fall. An old post hole is adjacent to the monument. I found dim stump holes at the location of both GLO bearing trees. I found a distinct stump hole at the location of Hall's birch stub. In place of the iron pipe, I set a 1.0" diam., 30" long aluminum pipe with a 2.5" diam. Oneida Co. aluminum cap flush with the ground surface. I found or established accessories as shown below. I set a white vinyl sign post bearing South, 1.0 ft. The corner is in a recent N-S blue painted line.

The coordinate value shown has been verified by at least one of the following methods: 1) comparison to a previously GPS determined published value; 2) the value is the average of two or more GPS observations at a markedly different time; 3) one or more distances were measured back to the GPS observed corner from temporary GPS observed offset locations.

(c)(d)(e) Plan view of corner with ties to at least 4 witness monuments. If in disagreement with previously established corner, show the distances between the two corners and also indicate the ties to the disputed.



REGISTER OF DEEDS OFFICE
 ONEIDA COUNTY
 FILED

JUN 26 2020

KYLE J. FRANSON
 REGISTER OF DEEDS

(i) I, Jeffrey W. Austin, Professional Land Surveyor No. S-1885, hereby certify that the corner location on this record was determined by me or under my direction and control and that this U.S. Public Land Survey Monument Record is correct and complete to the best of my knowledge and belief.

[Handwritten Signature]
 Signature

JUNE 5, 2020
 Date