

U.S. PUBLIC LAND SURVEY MONUMENT RECORD

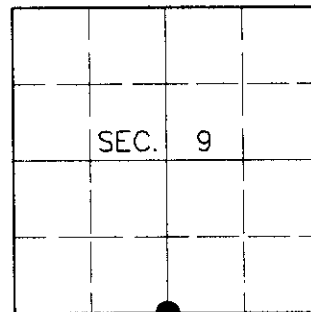
Note: This form is intended and designed to fulfill all requirements of Wisconsin Administrative Code, Chapter A-E 7.08, U.S. Public Land Survey Monument Record (3)(a)(b)(c)(d)(e)(f)(g)(h)(i). An additional sheet may be added if necessary to conform with said requirements.

(a) CORNER LOCATION

South ¼ Corner of Section 9
 Township 38 North
 Range 5 East
 Town of Minocqua

State Plane Coordinates

X
 Y
 Datum
 County of Oneida



(b) HISTORY OF ORIGINAL CORNER ESTABLISHMENT

Original Surveyor: Alexander Anderson

Original Bearing Trees:

Date of Survey: Commenced Oct. 6, 1863
 Completed Oct. 13, 1863

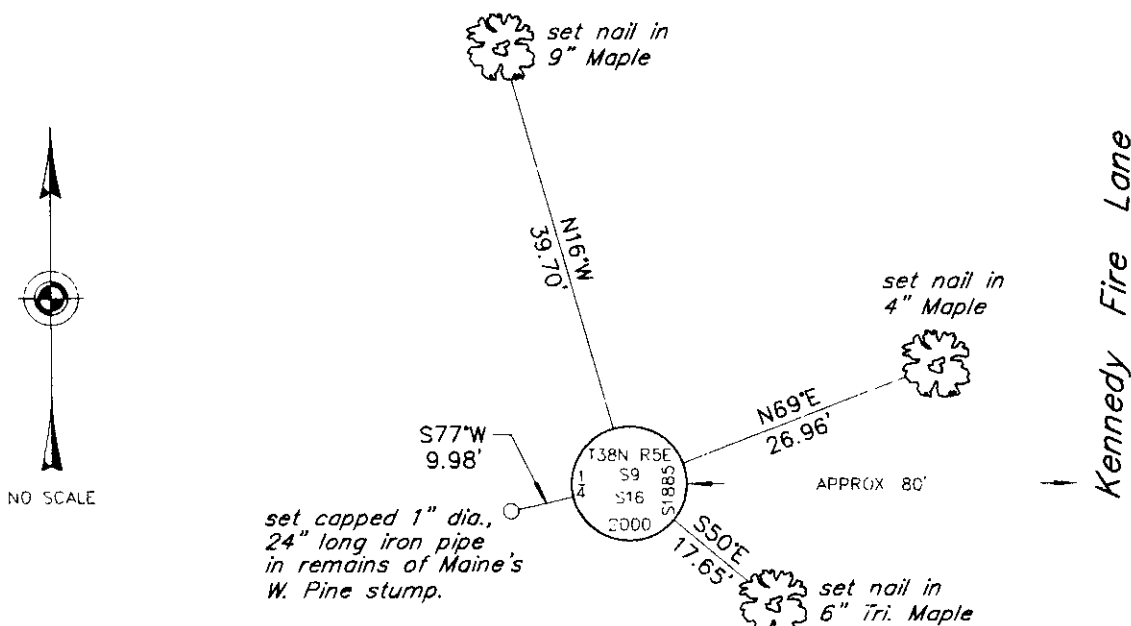
Tamarack 12 N12-½°E, 6 links
 W. Pine 9 S26°E, 8 links

(b)(f)(g)(h) Description of monument found at this corner and if it was accepted, state all evidence (material, testimonial, occupational, plats, records, other monuments) used as a basis for accepting. If not accepted or if nothing was found, state evidence used as basis for establishing location. If reestablished through lost corner proportionate methods, indicate all monuments, distances and directions used to establish. Indicate type of monument and sign post found or set.

April, 1938: Maine Book 2, Page 67. Maine recovers original ¼ stake between Secs. 9 and 16. He sets a R.R. iron and cedar post with the following bearing tree: W. Pine stump 12 S73°W, 0.14½ ch.

June 21, 2000: I found and accepted a 48" long piece of railroad track with the remains of Maine's stump as shown below. I replaced the track with a 2-½" dia., 30" long aluminum pipe with 3-¼" dia. Oneida County aluminum cap 4" above grade in a rock cairn and marked as shown below. I established accessories as shown below and set a plastic sign post Southwest, 1 foot.

(c)(d)(e) Plan view of corner with ties to at least 4 witness monuments. If in disagreement with previously established corner, show the distances between the two corners and also indicate the ties to the disputed corner.



(i) I, Jeffrey W. Austin, Registered Land Surveyor S-1885, hereby certify that the corner location on this record was determined by me or under my direction and control and that this U.S. Public Land Survey Monument Record is correct and complete to the best of my knowledge and belief.

[Handwritten Signature]

7-31-00
 Date



INDEX NO. J-11