

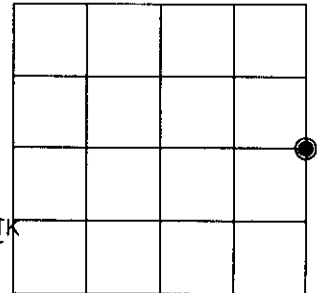
U.S. PUBLIC LAND SURVEY MONUMENT RECORD

Note: This form is intended and designed to fulfill all requirements of Wisconsin Administrative Code, Chapter A-E 7.08 U.S. Public Land Survey Monument Record (3)(a)(b)(c)(d)(e)(f)(g)(h)(i). An additional sheet may be added if necessary to conform with said requirements.

(a) CORNER LOCATION:

East 1/4 corner of Sec. 9
 Township 38 North
 Range 5 East
 Town/~~City/Village~~ Minocqua
 County of Oneida

Oneida County Coordinates
 North 223058.7424
 East 149826.2398
 Control Station # 278 S
 Latitude 45°48'31.23574 N
 Longitude 89°51'31.13730 W
 Datum NAD-83,'91 Method Direct-RTK



(b) HISTORY OF ORIGINAL CORNER ESTABLISHMENT

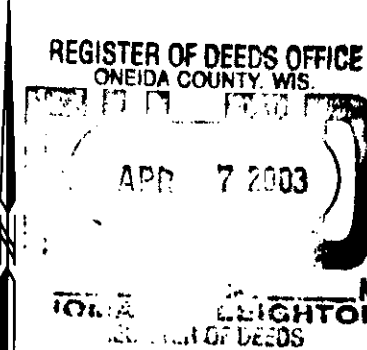
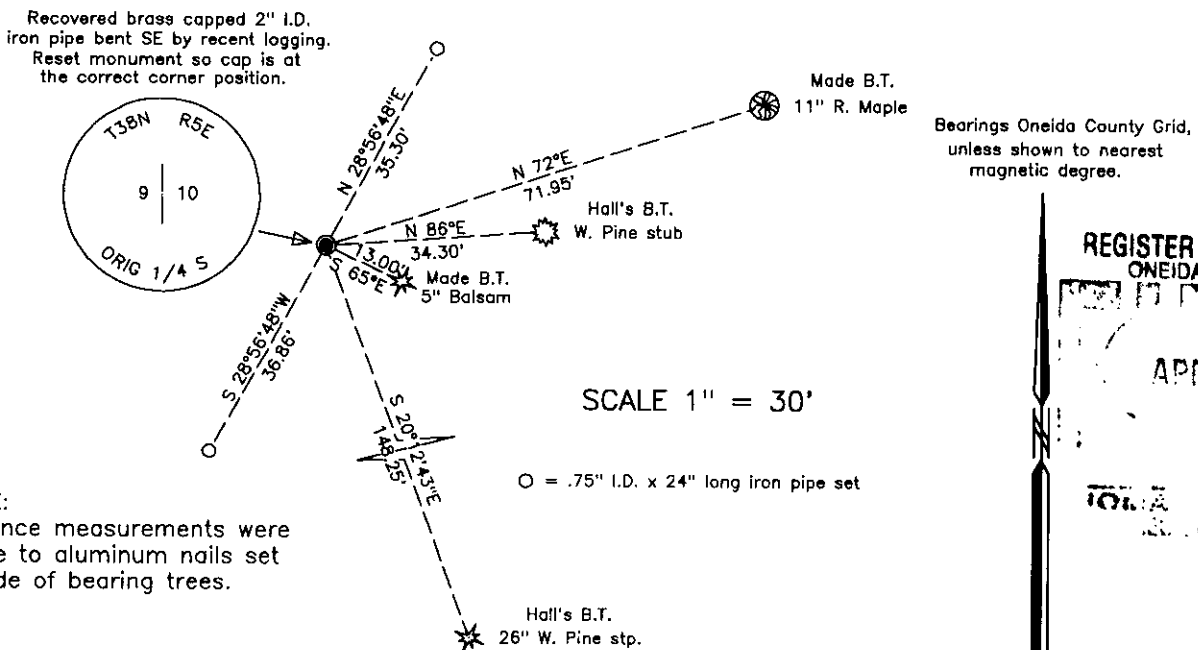
Original Surveyor: Alexander Anderson Original B.T.'S SECTION 9
 Date of Survey: Commenced Oct. 6, 1863 Hemlock 9" N89 1/2°E, 12 lks.
 Completed Oct. 13, 1863 Birch 9" S 28 1/2°W, 10 lks.

(f)(g)(h) Description of monument found at this corner and if it was accepted, state all evidence (material, testimonial, occupational, plats, records, other monuments) used as a basis for establishing location. If not accepted or if nothing was found, state evidence used as basis for establishing location. If reestablished through lost corner proportionate methods, indicate all monuments, distances and directions used to establish. Indicate type of monument and sign post found or set.

December 18, 1936 – Hall & Swearinger, Oneida County Survey record: Set County Mon. 8" exposed, at original 1/4 S between 9 & 10 – 38 – 5 at intersection of record distances from stumps of both original bearing trees: Orig. Hemlock bears N 83°E, 12 lks.; Orig. Birch S 35°W, 10 lks.: New B.T.s: W. Pine 4" N 83°E, .519 chains (34.25 feet); W. Pine 9" S 22°E, 2.245 chains (148.17 feet); and a Maple 3" N 10°W, .265 chains (17.49 feet). West corner of swamp bears SE 0.50 chains +/-.

November 16, 2002 – James D. Rein, R.L.S. No. 1234: Recovered brass capped 2 in. inside diameter iron pipe bent southeast by recent clear cut logging. I reset the pipe so that top of cap is plumb with good base and checks with two of Hall bearing tree stumps as shown in plan. I set a plastic county post alongside of the corner monument and also set two reference iron pipes and made new bearing trees as shown in plan.

(c)(d)(e) Plan view of corner with ties to at least 4 witness monuments. If in disagreement with previously established corner, show the distance between the two corners and also indicate the ties to the disputed corner.



(i) I, James D. Rein, Registered Land Surveyor No. 1234, hereby certify that the corner location on this record was determined by me or under my direction and control and that this U.S. Public Land Survey Monument Record is correct and complete to the best of my knowledge and belief.

James D. Rein

January 17, 2003

Signature

Date

3805092000



INDEX NO. 5-13