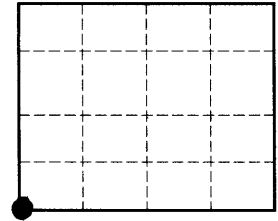


# U. S. PUBLIC LAND SURVEY MONUMENT RECORD

Note: This form is intended and designed to fulfill all requirements of Wisconsin Administrative Code, Chapter A-E 7.08 U. S. Public Land Survey Monument Record (3) (a) (b) (c) (d) (e) (f) (h) (i). An additional sheet may be added if necessary to conform with said requirements.



Section 11

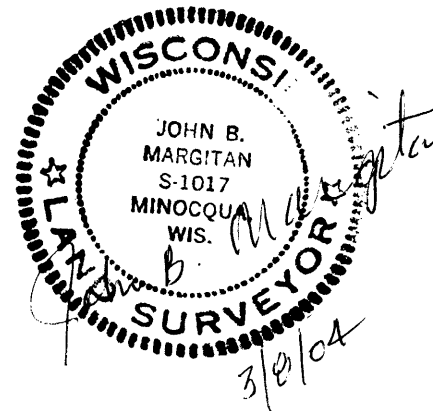
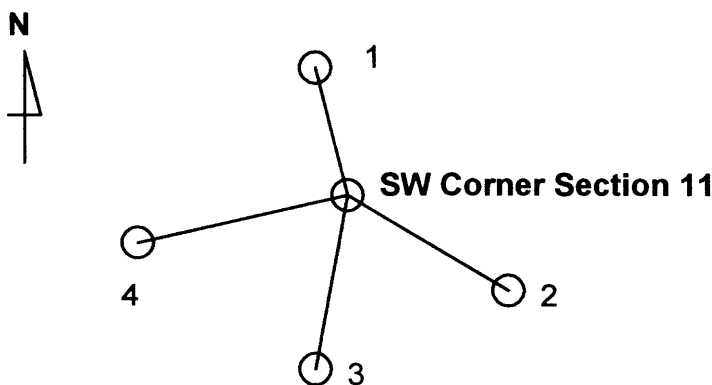
a) Corner location: **SW Corner, Section 11, Township 38 North, Range 5 East, Town of Minocqua, Oneida County, Wisconsin**

b) (f) (g) (h) Description of monument found at this corner and if it was accepted, state all evidence (material, testimonial, occupational, plats, records, other monuments) used as a basis for accepting. If not accepted or if nothing was found, state evidence used as basis for establishing location. If reestablished through lost corner proportionate methods, indicate all monuments, distances and directions used to establish type of monument found or set and sign post.

1. **Original corner set by Deputy U. S. Surveyor Alexander Anderson Oct. 1863: Wood Post : Bt's Tamarack 6", N12-½ °W, 15lks(9.90') and Yellow Pine 6", S66½ °W, 33 lks (21.78').**
2. **Ray Hall found Corner Location from original BT'S, July 14, 1933 while conducting retracement work in Township. Set post and new BT's: Birch, 3", S87½°E, .078, and Jack, 4", N28°-40"W, .575; August Ahlborn's stake S, .03.**
3. **Wm H. Stuth shows wood post on Sketch prepared 2/15/89 of Survey by NEPCO on 3/9/62.**

**I find no evidence of any monumentation, but do find Original Bearing Trees identified by scribing on Tamarack stump and chaining notch on Yellow Pine stump. Set 2.4" x 30" Oneida County Aluminum Monument and Fiberglass Post. Monument set from Original BT information. Monument stamped SC, with S10, S11, S14, and S15 in proper quadrant.**

c) (d) (e) Plan view of corner with ties to at least 4 witness monuments. If in disagreement with previously established corner, show the distances between the two corners and also indicate the ties to the disputed corner.



Accessory Number	Description	Bearing	Distance to Center of Accessory (* to nail at base of tree)
1	8" White Pine	N15°W	* 39.38'
2	12" Balsam	S42°E	* 28.95'
3	6" Balsam	S11°W	* 33.84'
4	1"x24" iron pipe	S87°W	31.28'

i) I, **John B. Margitan** certify that the corner location on this record was determined by me or under my direction and control and that this U. S. Public Land Survey Monument Record is correct and complete to the best of my knowledge and belief.

Signature John B. Margitan

Date 3/2/2004

3805/00000