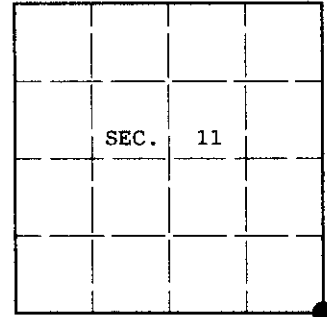


U.S. PUBLIC LAND SURVEY MONUMENT RECORD

Note: This form is intended and designed to fulfill all requirements of Wisconsin Administrative Code, Chapter A-E 7.08 U.S. Public Land Survey Monument Record (3) (a) (b) (c) (d) (e) (f) (g) (h) (i). An additional sheet may be added if necessary to conform with said requirements.

(a) CORNER LOCATION:
 Corner common to Secs. 11, 12, 13 and 14
 Township 38 North
 Range 5 East, 4th Principal Meridian
 Town of Minocqua

Plane Coordinates
 X:
 Y:
 Datum:
 County of Oneida



(b) HISTORY OF ORIGINAL CORNER ESTABLISHMENT

Original Surveyor: Alexander Anderson
 Date of Survey: Commenced: Oct. 6, 1863
 Completed: Oct. 13, 1863

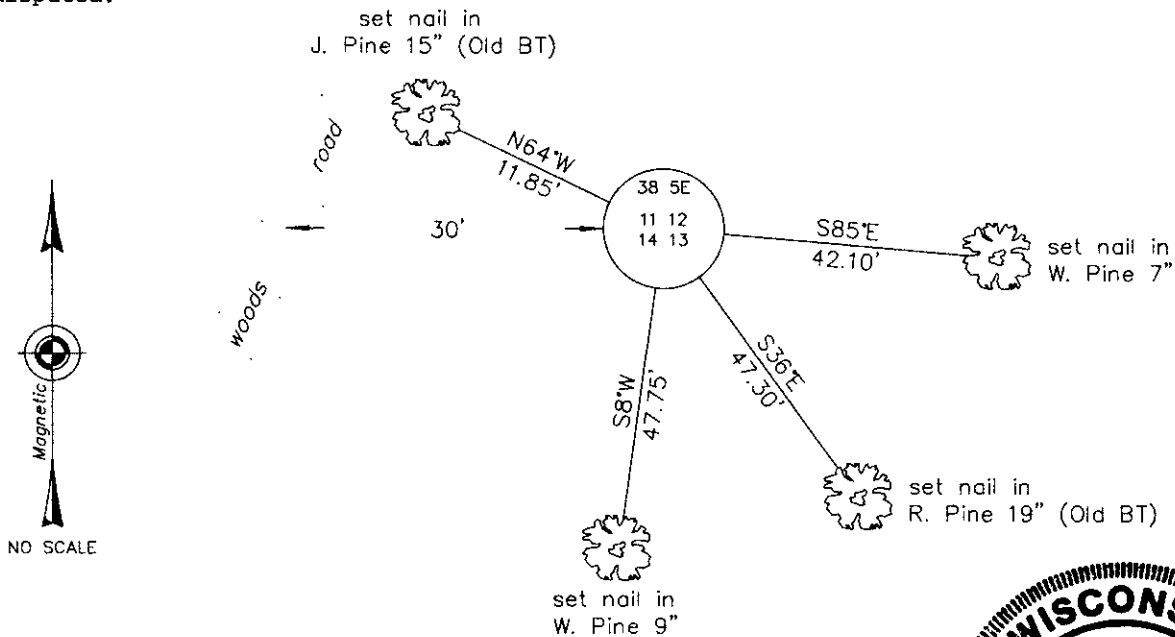
Original Accessories:
 Aspen 6 N.42°W. 114 lks.
 Aspen 5 N.58°E. 1 lk.

(b) (f) (g) (h) Description of monument found at this corner and if it was accepted, state all evidence (material, testimonial, occupational, plats, records, other monuments) used as a basis for accepting. If not accepted or if nothing was found, state evidence used as basis for establishing location. If reestablished through lost corner proportionate methods, indicate all monuments, distances and directions used to establish. Indicate type of monument and sign post found or set.

August 15, 1935: Hall notes on page 173 "Final corner 11, 12, 13, 14 by double pro rate. Set conservation dept. monument: Orig ? Jack Pine S.35°E., .751; New Jack Pine 5 S.43°05'W., .648."

June 16, 2003: I found and accepted an iron post, 2-1/2 ins. diam. with WCD brass cap 12 ins. above the ground and marked as shown below. I could find no evidence of Hall's bearing trees. I established accessories as shown below and set a plastic sign post South, 0.7 ft. dist.

(c) (d) (e) Plan view of corner with ties to at least 4 witness monuments. If in disagreement with previously established corner, show the distances between the two corners and also indicate the ties to the disputed.



(i) I, Jeffrey W. Austin, Registered Land Surveyor No. S-1885, hereby certify upon honor that the corner location on this record was determined by me or under my direction and control and that this U.S. Public Land Survey Monument Record is correct and complete to the best of my knowledge and belief.

Jeffrey W. Austin #S-1885

SEPT. 15, 2003
 Date



3805110000