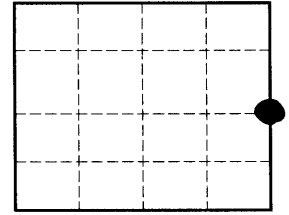


U. S. PUBLIC LAND SURVEY MONUMENT RECORD

Note: This form is intended and designed to fulfill all requirements of Wisconsin Administrative Code, Chapter A-E 7.08 U. S. Public Land Survey Monument Record (3) (a) (b) (c) (d) (e) (f) (h) (i). An additional sheet may be added if necessary to conform with said requirements.



Section 11

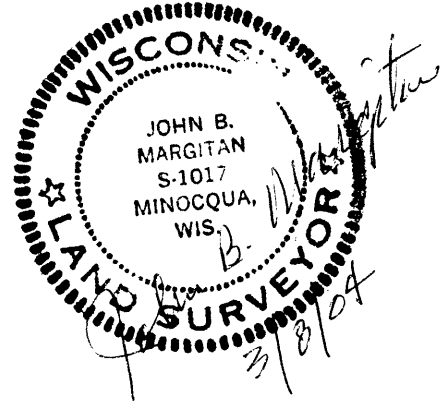
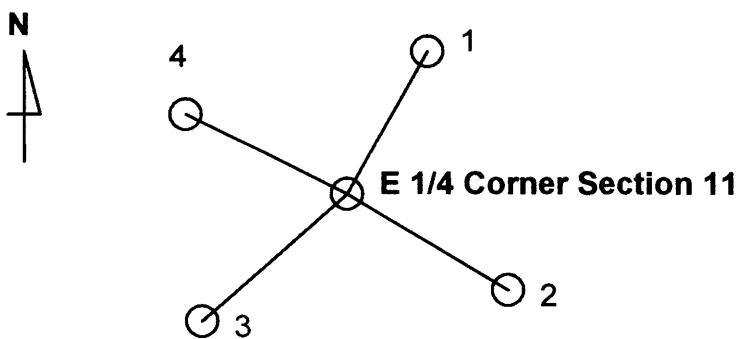
a) Corner location: **E 1/4 Corner, Section 11, Township 38 North, Range 5 East, Town of Minocqua, Oneida County, Wisconsin**

b) (f) (g) (h) Description of monument found at this corner and if it was accepted, state all evidence (material, testimonial, occupational, plats, records, other monuments) used as a basis for accepting. If not accepted or if nothing was found, state evidence used as basis for establishing location. If reestablished through lost corner proportionate methods, indicate all monuments, distances and directions used to establish type of monument found or set and sign post.

1. **Original corner set by Deputy U. S. Surveyor Alexander Anderson Oct. 1863: Wood Post : Bt's Yellow Pine 6", S8°W, 726 lks (479.16') and Birch 5", S6°E, 724 lks (477.84').**
2. **Ray Hall in 1934, while conducting retracement work in Township searches for but does not find any evidence of monument or Bt's. He sets the NE and SE corners of S 11 and indicates the distance between the corners.**
3. **Wm H. Stuth shows Section 12 subdivision on Sketch prepared 3/22/62 of Survey by NEPCO but does not indicate any monument at West 1/4 of S-12 (E 1/4) S-11.**

I find a 2" x 21" iron pipe with holes in top, in middle of tag alder swamp S00°-01'-14"W, 2617.25' from NE Corner of S-11 and N00°-02'-10"W, 2615.28' from SE Corner of S-11. I accept the found iron pipe as marking the E 1/4 Corner of Section 11. I feel that this pipe was set by Hall during retracement and survey work in Sections 1, 2, 11, and 12. Set 2.4" x 60" Oneida County Aluminum Monument and Fiberglass Post. Monument set over iron pipe. Monument stamped 1/4 S and S11 and S12 on proper side of monument.

c) (d) (e) Plan view of corner with ties to at least 4 witness monuments. If in disagreement with previously established corner, show the distances between the two corners and also indicate the ties to the disputed corner.



Accessory Number	Description	Bearing	Distance to Center of Accessory (* to nail at base of tree)
1	1"x24" iron pipe	N6°-47'E	31.43'
2	1"x24" iron pipe	S68°-03'E	31.53'
3	1"x24" iron pipe	S18°-33'W	36.48'
4	1"x24" iron pipe	N88°-29'W	30.52'

i) I, **John B. Margitan** certify that the corner location on this record was determined by me or under my direction and control and that this U. S. Public Land Survey Monument Record is correct and complete to the best of my knowledge and belief

Signature John B. Margitan Date 3/8/2004

3805112000

6-21