

# U.S. PUBLIC LAND SURVEY MONUMENT LOCATION RECORD

Recorders Data

CORNER: NW Section Corner SECTION: 18 TOWNSHIP 38 NORTH RANGE 6 EAST/WEST

FOR M.C. CORNER INDICATE: NAME OF WATERWAY N/A SECTION LINE N/A

~~CITY~~(VILLAGE)(TOWN) OF: Hazelhurst COUNTY OF: Oneida

Description of monument found or placed and all other evidence used as a basis for monument location; including all monuments and related measurements required if the corner location is reestablished by lost corner proportionate methods. Also indicate name of original surveyor, survey date, corner monument set and established bearing trees, witness or reference monuments with ties from available records.

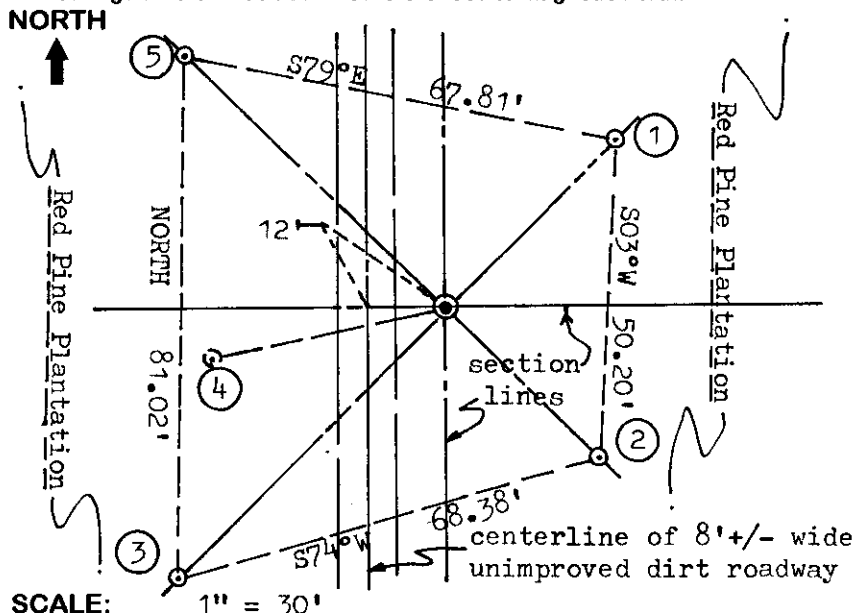
Found and accepted a standard 2" dia. iron pipe monument with stamped WCD brass cap 6" above existing grade at this corner and an old 4" square wood corner marker post 6" West with an Owens-Illinois aluminum locator plate/tag nailed to West face.

In 1860, Millard set a wood post as the corner and marked BTs, a 12" Spruce OBT N65°E at 1.18 chains and a 10" Spruce Pine S19°W 1.01 chains, which are now all obliterated. In 1964 a NEPCO survey noted an iron pipe or brass cap at this corner per map by Stuth in 1989, filed in Oneida County Survey records. No other corner evidence was observed or detected with metal locator within the nearby corner location area.

I set a standard white poly 'T' corner marker post 6" NE of iron reference pipe at #1, 6" SE of iron pipe at #2, 6" SW of iron pipe at #3 and 6" NW of iron pipe at #5 witness monuments described below. I also painted both faces of old BT orange and nailed a standard Oneida County Do Not Disturb BT sign to SE face.

This recovery completed May 13, 1998; there were no witnesses.

Plan view map of monument location with bearing and distance ties to a minimum of four(4) described witness or reference monuments of concrete, natural stone, iron, live bearing trees or equivalent material. If applicable, also show a minimum of two(2) bearing and distance ties to any other monument found and not accepted; including the bearing and distance from the accepted monument. Indicate the basis for bearings of reference ties if not referenced to magnetic north.



### WITNESS MONUMENT TIES:

- ① 1" dia. by 24" long iron pipe set with Reference Mark plug cap in top on a right line thru corner center point N45°E 37.88'.
- ② Same monument S45°E 33.35'.
- ③ Same monument S45°W 59.34'.
- ④ Old tall dead 13" pine BT found with upper & lower face blazes open S78°W 36 1/2' to upper face.
- ⑤ Same I.P. monument set N45°W 55.82'.

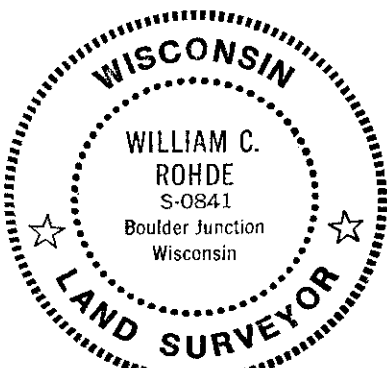
Note: No larger dia. BT trees near.

Unless otherwise indicated, all bearing tree ties are to a .25" dia. by 2.5" long PK nail with a 1.25" dia. steel washer driven into unblazed right face and a .25" dia. by 2.5" long PK nail with a 2" dia. steel washer stamped 'BT' is also driven into unblazed face of bearing tree at DBH; the basis for measured bearings is magnetic to nearest degree and all tie distances are horizontal measure to nearest 1/100th feet.

### LAND SURVEYOR CERTIFICATION:

I, William C. Rohde, hereby certify that I am a duly licensed Professional Land Surveyor in Wisconsin, that this USPLS monument location was determined by me or under my direction and control, and that this U.S. Public Land Survey Monument Location Record is true and correct to the best of my knowledge and belief.

William C. Rohde Date: 5-17-98  
Signature



RLS SEAL

SHEET NO. 1 OF 1

This form is intended to fulfill requirements of Chapter A-E 7.08 (3)(a)(b)(c)(d)(e)(f)(g)(h)(i) U.S. Public Land Survey Monument Location Record, Wisconsin Administrative Code. Use reverse side for geodetic location data and/or continuation purposes.

		18	

SECTION LOCATION MAP

INDEX NO. J 1  
3805120000

INDEX NO.