

CERTIFIED LAND CORNER RESTORATION

State of Wisconsin }
County of Oneida } ss.

I Jerome N. Kraemer, do hereby certify that on the 5th day of November, 1980, I found evidence of the section corner corner of common to 13, 18, 19 & 24 Township 38 North, Range 6 East, Fourth Principal Meridian, as described hereon; and that from this evidence I established a new monument and accessories as described hereon to perpetuate the original location of this corner:

Description of original monument and accessories and subsequent restorations:

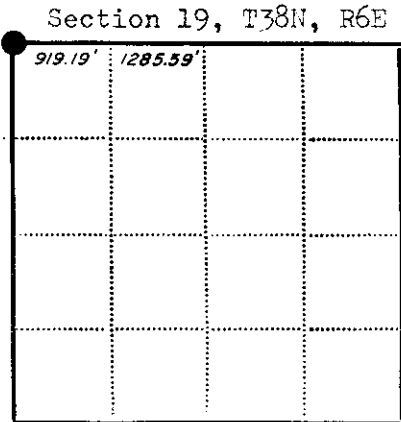
- Wood post set by Alexander Anderson, Deputy Surveyor, 1863, witnessed by a
4" Yellow Pine S20°W, 12 links;
4" Yellow Pine S15°E, 8 links;
4" Yellow Pine N50°W, 19 links;
8" Yellow Pine N40°E, 16 links;

Description of corner evidence found:

Found a 3" diameter round brass cap affixed to a 2" diameter round iron pipe. Cap has been stamped "Section Corner" with corresponding section numbers, Township and Range. Monument is flush with the ground and lies 14 feet east of centerline of Bear Lake Road.

Description of monument and accessories I established to perpetuate the location of this corner:

I witnessed the existing monument with the following scribed bearing trees with P.K. nails set in lower blaze:
8" Maple S30°E, 5.00 feet;
12" Norway Pine, N53°E, 24.67 feet;
20" Norway Pine, N88°E, 47.30 feet;
Set a scribed squared Jack Pine Post to witness monument.



Corner monument restored
-

Resident witnesses None

Dated at Minocqua Wisconsin, this 11th day of March 1981.

Signature Jerome N. Kraemer Title Registered Land Surveyor
(County Surveyor, Registered Land Surveyor, or other duly authorized official)

Surveyors Registration No. S - 1448

Office of Reg. of Deeds County of Oneida
I hereby certify that the within instrument was filed in this office for record on the 11 day of June 1986, and was filed in Book No. Page No. of County Records.

Signature Doris Verage Kuehn Title Register of Deeds
Cynthia A. Potts Deputy

Township, Range, Section, Index No., Page No.

U.S. PUBLIC LAND SURVEY MONUMENT RECORD

REGISTER OF DEEDS OFFICE
ONEIDA COUNTY
FILED

Note: This form is intended and designed to fulfill all requirements of the Wisconsin Administrative Code, Chapter A-E 7.08 U.S. Public Land Monument Record (3)(a)(b)(c)(d)(e)(f)(g)(h)(i). An additional sheet may be added if necessary to conform with said requirements.

JAN 17 2022

KYLE J. FRANSON
REGISTER OF DEEDS

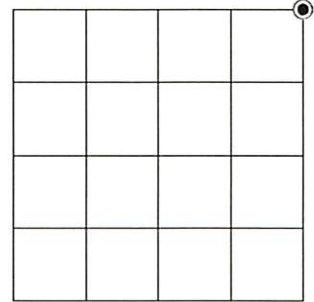
(a) CORNER LOCATION:

Northeast Corner of Section 24
Township 38 North
Range 5 East
Town of Minocqua
County of Oneida

North:
East:
Datum:
GNSS Method:
GNSS Control:

(RECORDING AREA)

SECTION 24



(b) HISTORY OF ORIGINAL CORNER ESTABLISHMENT

Original Surveyor:
Date of Survey: Commenced
Completed
Original B.T.'S

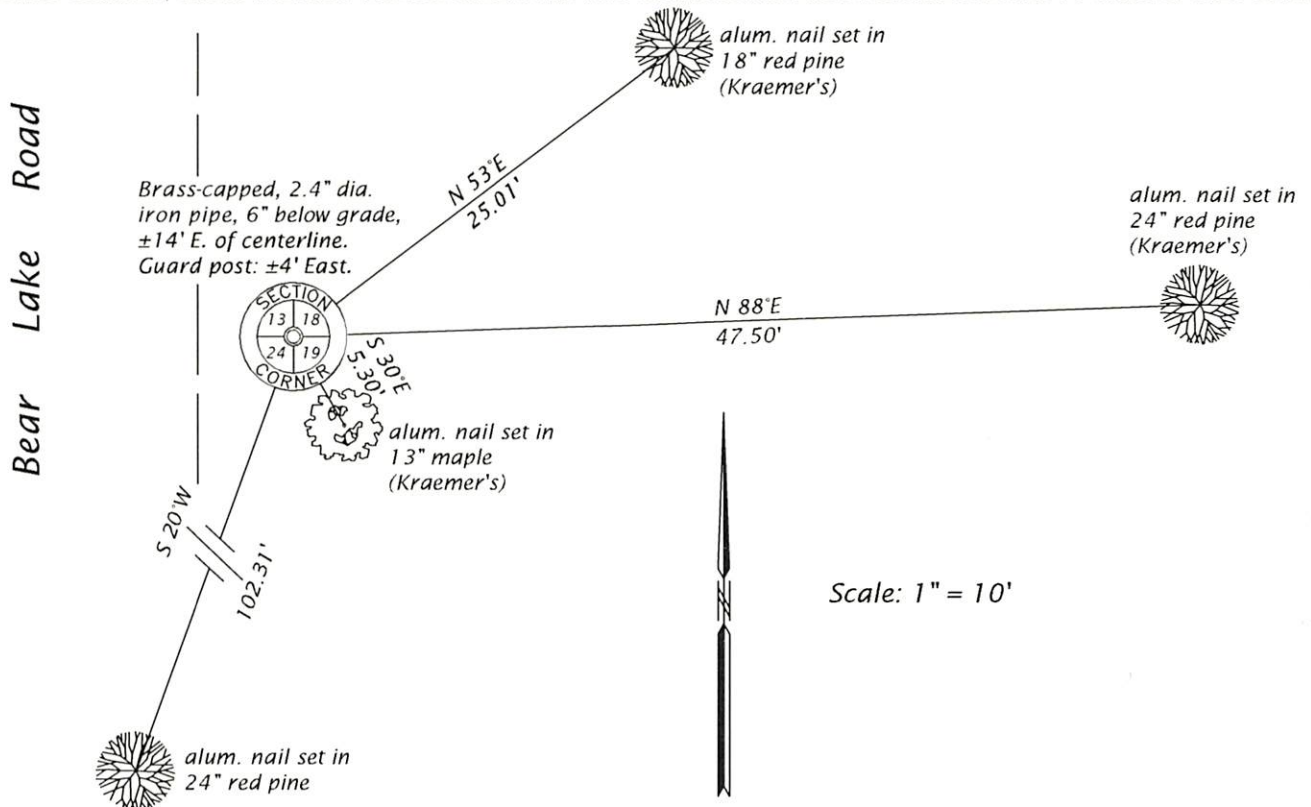
SEE PREVIOUS U.S.P.L.S. MONUMENT
RECORD DATED MARCH 11, 1981.

(f)(g)(h) DESCRIPTION OF MONUMENT FOUND AT THIS CORNER AND IF IT WAS ACCEPTED, STATE ALL EVIDENCE (MATERIAL, TESTIMONIAL, OCCUPATIONAL, PLATS, RECORD, OTHER MONUMENTS) USED AS A BASIS FOR ESTABLISHING LOCATION. IF NOT ACCEPTED OR IF NOTHING WAS FOUND, STATE EVIDENCE USED AS BASIS FOR ESTABLISHING LOCATION. IF REESTABLISHED THROUGH LOST CORNER PROPORTIONATE METHODS, INDICATE ALL MONUMENTS, DISTANCES AND DIRECTIONS USED TO ESTABLISH. INDICATE TYPE OF MONUMENT AND SIGN POST FOUND OR SET.

This is a perpetuation of a previous U.S.P.L.S. Monument Record by Jerome N. Kraemer, RLS, dated March 11, 1981, and filed in the office of the Oneida County Register of Deeds. A complete history of the corner can be found on the previous monument record. I accept the previous location as a true and faithful perpetuation or reestablishment of the original corner location and further perpetuate it as follows.

March 20, 2020, James D. Rein, P.L.S. No. S-1234, we found and I accepted the brass-capped iron pipe shown on the previous monument record by Kraemer. We also recovered his three bearing trees. We referenced the monument to an additional bearing tree - see below for updated witnesses.

(c)(d)(e) PLAN VIEW OF CORNER WITH TIES TO AT LEAST 4 WITNESS MONUMENTS. IF IN DISAGREEMENT WITH PREVIOUSLY ESTABLISHED CORNER, SHOW THE DISTANCE BETWEEN THE TWO CORNERS AND ALSO INDICATE THE TIES TO THE DISPUTED CORNER.



(i) I, JAMES D. REIN, PROFESSIONAL LAND SURVEYOR NO. S-1234 HEREBY CERTIFY THAT THE CORNER LOCATION ON THIS RECORD WAS DETERMINED BY ME OR UNDER MY DIRECTION AND CONTROL AND THAT THIS U.S. PUBLIC LAND SURVEY MONUMENT RECORD IS CORRECT AND COMPLETE TO THE BEST OF MY KNOWLEDGE AND BELIEF



James D. Rein
SIGNATURE

01-07-22
DATE

INDEX NO. N - 25
3805130000