

Stock No. 26273

Stock No. 26272

State of Wisconsin } ss.
County of Oneida

I, John H. Fisher, do hereby certify that on the 2nd day of July, 1984, I found evidence of the North one quarter corner of Section 24, Township 38 North, Range 5 East, Fourth Principal Meridian, as described hereon; and that from this evidence I established a new monument and accessories as described hereon to perpetuate the original location of this corner.

Resident witnesses:

None

CERTIFIED LAND CORNER RESTORATION
U. S. PUBLIC LAND SURVEY MONUMENT RECORD

Index No. N-23

History of original corner establishment:
The original Government survey was performed by Alexander Anderson, Deputy Surveyor, in October 1863.

Set wood post:
Spruce 5" S 10°E 4 links
Spruce 5" N 7°W 16 links

Description of corner evidence found:

2" iron pipe with brass cap and 4" x 4" scribed post approximately 80 feet north of Cedar Falls Road

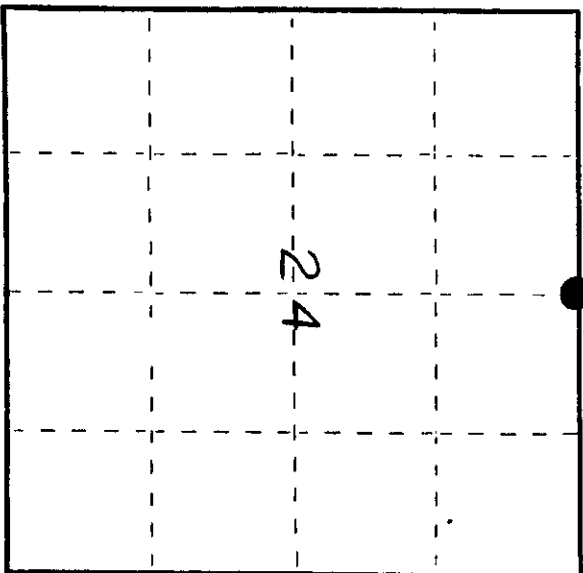
Storm damaged area - found no B. T.'s.

Description of monument and accessories I established to perpetuate the original location of this corner.

Corner in good condition

Set nails in new B. T.'s.

Spruce	5"	N 2°W	46.78 feet
Poplar	5"	N25°E	10.60 feet
White Birch	6"	S37°E	20.30 feet
Spruce	7"	S55°W	20.55 feet



● - Corner monument restored.

Dated at Minnequa, Wis., this 20th day of August, 1984.

Signature: *Alexander Anderson* Title: Registered Land Surveyor Registration No. S-836
(County Surveyor, Registered Land Surveyor, or other duly authorized official)

Office of Register of Deeds, County of Oneida, I hereby certify that the within instrument was filed in this office for record on the 19th day of August, 1984, at 10 o'clock A.M.

(Register of Deeds)

By: _____ Deputy

3905130020

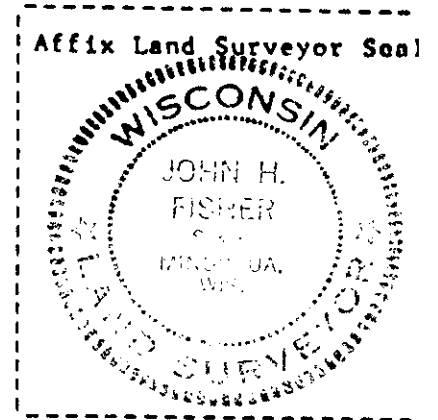
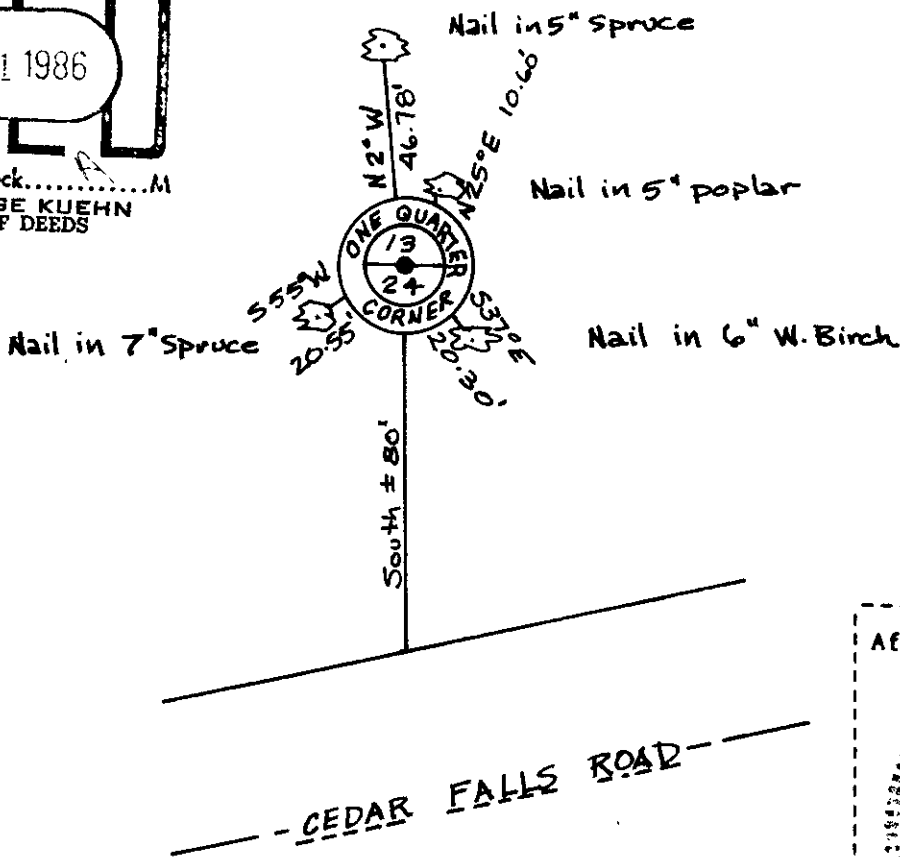
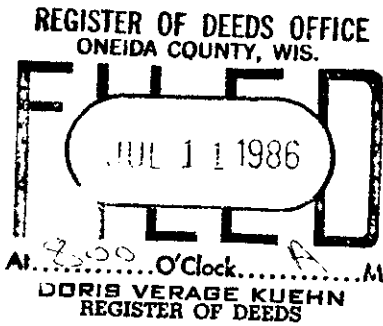
(c) Describe any material discrepancy between the location of the corner as restored or reestablished and the location of that corner as previously restored or reestablished by distance and direction. Show the discrepancy on the plan view drawing under (d), above. Show the distances between the corner as previously restored or reestablished and (1) the corner as restored or reestablished, and (2) to at least 2 of the witness monuments shown on the drawing in (d), above.

See sketch below

(f) Was the corner restored through acceptance of (1) an obliterated evidence location, or, (2) a found perpetuated location?

Found Perpetuated

(g&h) Was the corner reestablished through lost corner proportionate methods? If so, show the method, including the directions and distances to other public land survey corners used as evidence or used for proportioning in determining the corner location?



(i) I, John H. Fisher
 (type or print name) certify that the corner location shown on this record was determined by me or under my direction and control and that this U.S. Public Land Survey Monument Record is correct and complete to the best of my knowledge and belief.

John H. Fisher
 Signature

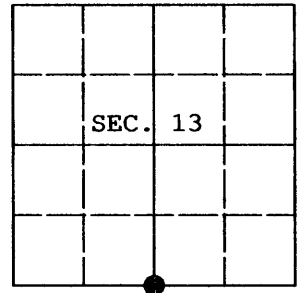
8/30/84
 Date

REGISTER OF DEEDS
ONEIDA COUNTY, WIS.
FILED
APR 14 2010

U.S. PUBLIC LAND SURVEY MONUMENT RECORD

Note: This form is intended and designed to fulfill the requirements of Wisconsin Administrative Code, Chapter A-E 7.08 U.S. Public Land Survey Monument Record (3) (a) (b) (c) (d) (e) (f) (g) (h) (i). An additional sheet may be added if necessary to conform with said requirements.

(a) CORNER LOCATION: Plane Coordinates
 1/4 Cor. of Secs. 13 & 24 X:
 Township 38 North Y:
 Range 5 East of the 4th P.M. Datum:
 Town of Minocqua County of Oneida



(b) HISTORY OF ORIGINAL CORNER ESTABLISHMENT

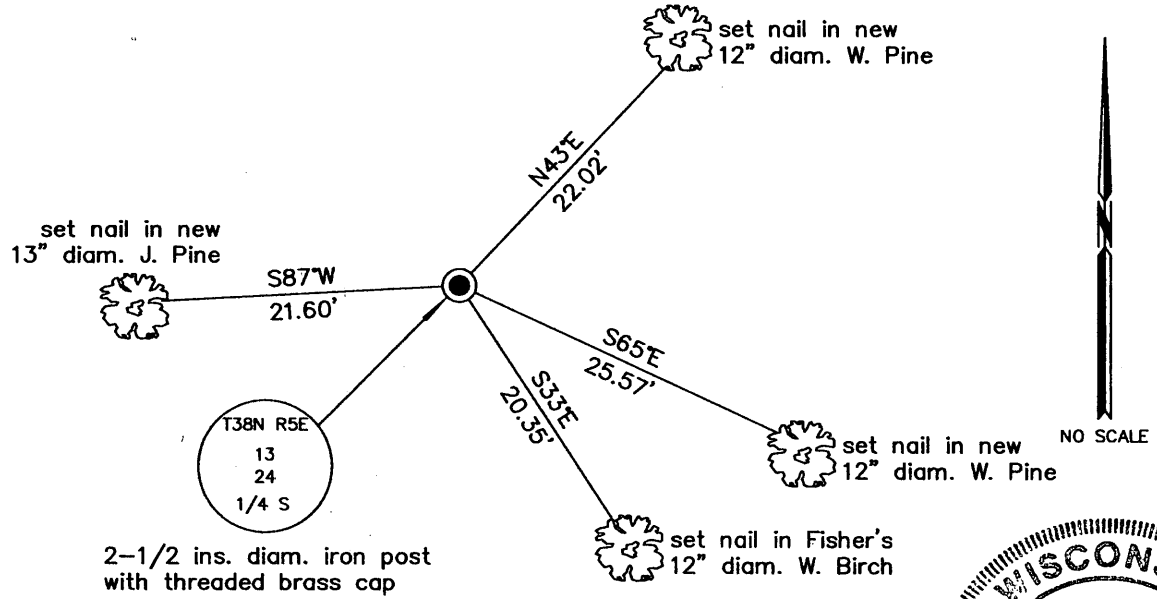
Original Surveyor: Alexander Anderson Original Accessories:
 Date of Survey: Commenced October, 1863 Spruce 5" S.10°E., 4 lks.
 Completed October, 1863 Spruce 5" N.7°W., 16 lks.

(b) (f) (g) (h) Description of monument found at this corner and if it was accepted, state all evidence (material, testimonial, occupational, plats, records, other monuments) used as a basis for accepting. If not accepted or if nothing was found, state evidence used as basis for establishing location. If re-established through lost corner proportionate methods, indicate all monuments, distances and directions used to establish. Indicate type of monument and sign post found or set.

NOTE: This is a perpetuation of a previous USPLS Monument Record by John H. Fisher, RLS dated August 20, 1984 and filed in the office of the Oneida County Register of Deeds. A complete history of the corner can be found on the previous monument record. I accept the previous location as a true and faithful perpetuation or reestablishment of the original corner location and further perpetuate it as follows.

January 6, 2010: I found and accepted Fisher's monument, a 2-1/2 ins. diam. iron post with threaded brass cap projecting 8 ins. above the ground. I found only one of Fisher's trees still alive. I established accessories as shown below and found a white plastic sign post bearing Northeast, 1-1/2 ft. dist.

(c) (d) (e) Plan view of corner with ties to at least 4 witness monuments. If in disagreement with previously established corner, show the distances between the two corners and also indicate the ties to the disputed.



(i) I, Jeffrey W. Austin, Registered Land Surveyor No. S-1885, hereby certify upon honor that the corner location on this record was determined by me or under my direction and control and that this U.S. Public Land Survey Monument Record is correct and complete to the best of my knowledge and belief.



Signature: *[Handwritten Signature]*
 Date: MAR 30, 2010

3805 13 0020

INDEX NO. N-23