

U.S. PUBLIC LAND SURVEY MONUMENT RECORD

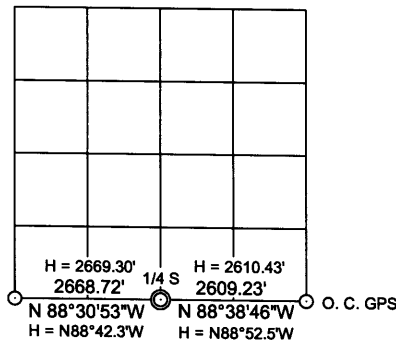
Note: This form is intended and designed to fulfill all requirements of the Wisconsin Administrative Code, Chapter A-E 7.08 U.S. Public Land Monument Record (3)(a)(b)(c)(d)(e)(f)(g)(h)(i). An additional sheet may be added if necessary to conform with said requirements.

(a) CORNER LOCATION:

South 1/4 corner of Section 14
Township 38 North
Range 5 East
Town of Minocqua
County of Oneida

O. C. COORDINATES

North: 215081.7145
East: 157876.4873
Control Station: O. C. 206
Latitude: 45° 45' 23.77331" N
Longitude: 89° 50' 35.03977" W
Datum: NAD - 83 (91)
Method: Direct RTK - GPS



(b) HISTORY OF ORIGINAL CORNER ESTABLISHMENT

Original Surveyor: Alexander Anderson, Deputy Surveyor
Date of Survey: Commenced October 6th, 1863
Completed October 13th, 1863

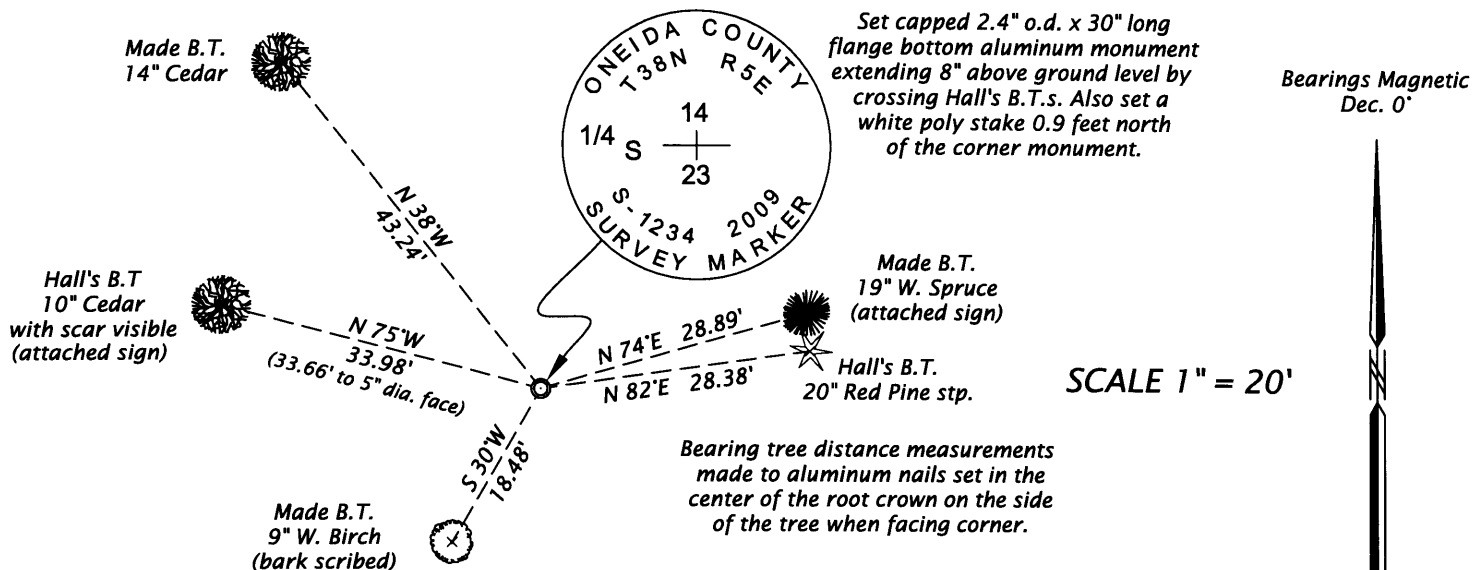
Original B.T.'s: Y. Pine 8" S58°E, 9 links (5.94 feet)
Y. Pine 10" N8°E, 9 links (5.94 feet)

(f)(g)(h) DESCRIPTION OF MONUMENT FOUND AT THIS CORNER AND IF IT WAS ACCEPTED, STATE ALL EVIDENCE (MATERIAL, TESTIMONIAL, OCCUPATIONAL, PLATS, RECORDS, OTHER MONUMENTS) USED AS A BASIS FOR ESTABLISHING LOCATION. IF NOT ACCEPTED OF IF NOTHING WAS FOUND, STATE EVIDENCE USED AS BASIS FOR ESTABLISHING LOCATION. IF REESTABLISHED THROUGH LOST CORNER PROPORTIONATE METHODS, INDICATE ALL MONUMENTS, DISTANCES AND DIRECTIONS USED TO ESTABLISH. INDICATE TYPE OF MONUMENT AND SIGN POST FOUND OR SET.

June 13, 1934 - R. H. Hall, Deputy County Surveyor - Transcribed notes in Hall Book 1, page 170 - Found Orig. 1/4 S - old post hole agreeing with both stps. Scribe marks on both. Set new scribed post (Cedar) in hole. Original bears S59°E, .09 ch. (5.94 feet); Original bears N9 1/4°E, .09 ch. (5.94 feet) New Var. 4° 30' E {Cedar 5" (in swamp) N73°-20' W, .51 ch. (33.66 feet) Y. Pine 10" N80°-45'E, .43 ch. (28.38 feet). Page 182, of the same book, contains Hall's calculated true line measurements along the south line of Section 14, which are shown above in the diagram.

March 29, 2009 - James D. Rein, RLS No. 1234 - Perform a search at Hall's record position for the original corner and find his live Cedar bearing tree and also a good low cut Red Pine stump corresponding with his record. This area shows sign of prior logging operations and no evidence of the post is remaining. I intersect Hall's record distances to the face of his original diameter bearing trees and find a 1 foot deep organic stain. At this position I place a capped 2.4 o.d. x 30" long flange bottom aluminum monument stamped as shown. This position is harmonious with Hall's calls to the section corners, as shown above on the diagram. I also set a white poly stake, 0.9 feet north of the corner, and make reference ties to new scribed bearing trees as shown below in the plan.

(c)(d)(e) PLAN VIEW OF CORNER WITH TIES TO AT LEAST 4 WITNESS MONUMENTS. IF IN DISAGREEMENT WITH PREVIOUSLY ESTABLISHED CORNER, SHOW THE DISTANCE BETWEEN THE TWO CORNERS AND ALSO INDICATE THE TIES TO THE DISPUTED CORNER.



(i) I, JAMES D. REIN, REGISTERED LAND SURVEYOR NO. S-1234 HEREBY CERTIFY THAT THE CORNER LOCATION ON THIS RECORD WAS DETERMINED BY ME OR UNDER MY DIRECTION AND CONTROL AND THAT THIS U.S. PUBLIC LAND SURVEY MONUMENT RECORD IS CORRECT AND COMPLETE TO THE BEST OF MY KNOWLEDGE AND BELIEF.



James D. Rein
SIGNATURE

April 8th 2009
DATE 380514020

INDEX NO. N-19