

# U.S. PUBLIC LAND SURVEY MONUMENT RECORD

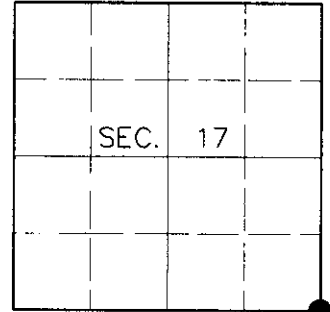
Note: This form is intended and designed to fulfill all requirements of Wisconsin Administrative Code, Chapter A-E 7.08, U.S. Public Land Survey Monument Record (3)(a)(b)(c)(d)(e)(f)(g)(h)(i). An additional sheet may be added if necessary to conform with said requirements.

**(a) CORNER LOCATION**

Southeast Corner of Section 17  
 Township 38 North  
 Range 5 East  
 Town of Minocqua

**State Plane Coordinates**

X  
 Y  
 Datum  
 County of Oneida



**(b) HISTORY OF ORIGINAL CORNER ESTABLISHMENT**

Original Surveyor: Alexander Anderson

Original Bearing Trees:

Date of Survey: Commenced Oct. 6, 1863  
 Completed Oct. 13, 1863

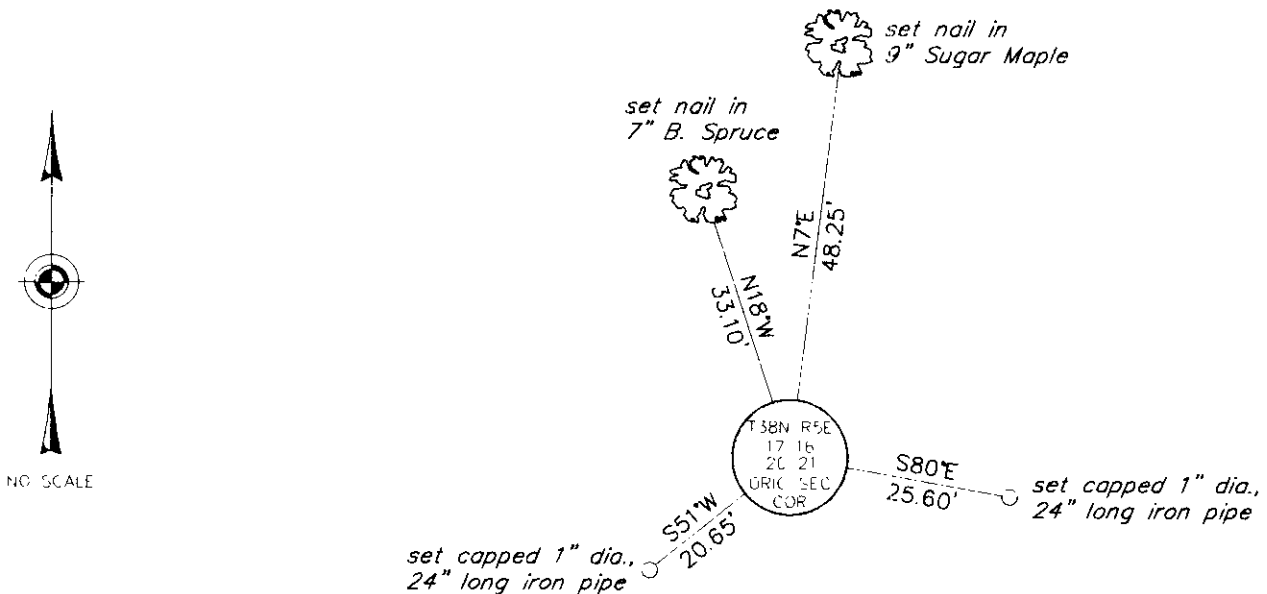
Tamarack 12 S55°E, 18 links  
 Maple 9 S35°W, 18 links

(b)(f)(g)(h) Description of monument found at this corner and if it was accepted, state all evidence (material, testimonial, occupational, plats, records, other monuments) used as a basis for accepting. If not accepted or if nothing was found, state evidence used as basis for establishing location. If reestablished through lost corner proportionate methods, indicate all monuments, distances and directions used to establish. Indicate type of monument and sign post found or set.

April, 1938: Maine Book 2, Page 64. Maine recovers Hall's brass capped iron pipe set previously based on original evidence no longer in existence.

June 21, 2000: I found and accepted a 2-1/2" dia. iron pipe with 3" dia. brass cap 22" above grade and marked as shown below. Based on survey work along the line common to Secs. 16 and 17, I am confident this is Hall's undisturbed monument. I established accessories as shown below and set a plastic sign post Southeast, 1 foot.

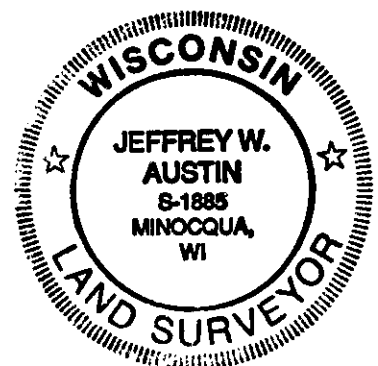
(c)(d)(e) Plan view of corner with ties to at least 4 witness monuments. If in disagreement with previously established corner, show the distances between the two corners and also indicate the ties to the disputed corner.



(i) I, Jeffrey W. Austin, Registered Land Surveyor S-1885, hereby certify that the corner location on this record was determined by me or under my direction and control and that this U.S. Public Land Survey Monument Record is correct and complete to the best of my knowledge and belief.

Signature

Date 7-31-00



INDEX NO. N-9

3805170000