

# U.S. PUBLIC LAND SURVEY MONUMENT RECORD

REGISTER OF DEEDS OFFICE  
ONEIDA COUNTY  
FILED

Note: This form is intended and designed to fulfill all requirements of the Wisconsin Administrative Code, Chapter A-E 7.08 U.S. Public Land Monument Record (3)(a)(b)(c)(d)(e)(f)(g)(h)(i). An additional sheet may be added if necessary to conform with said requirements.

NOV 23 2016

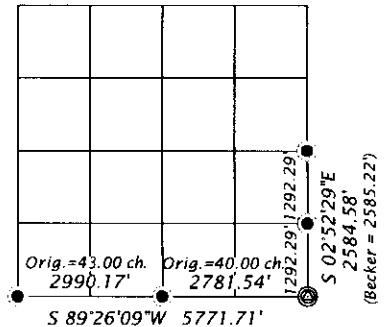
(a) CORNER LOCATION: Southeast Corner of Section 19  
Township 38 North  
Range 5 East  
Town of Minocqua  
County of Oneida

COORDINATES  
North: 210056.729  
East: 139593.338  
Projection: WISCORS - Oneida  
Datum: NAD 1983(2011)  
Method: computed, based on witnesses RTK - Direct

AT O'CLOCK  
KYLE J. FRANSON  
REGISTER OF DEEDS

(RECORDING AREA)

SECTION 19



(b) HISTORY OF ORIGINAL CORNER ESTABLISHMENT

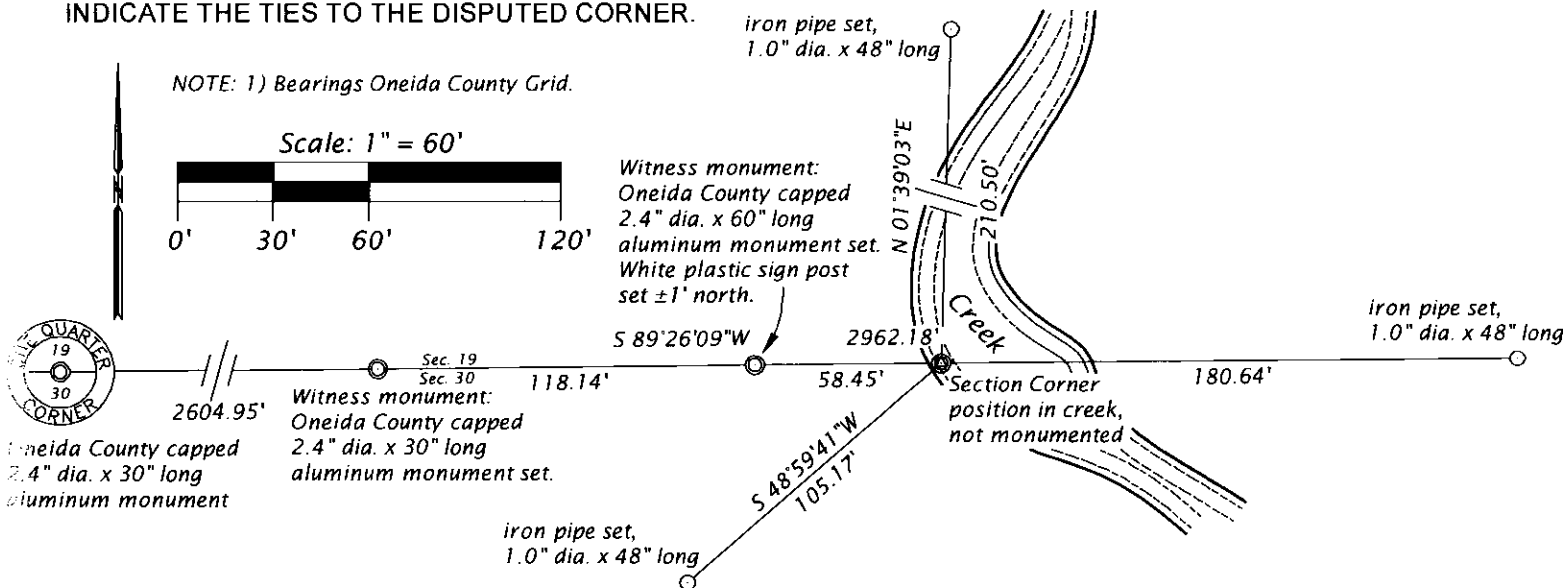
Original Surveyor: Alexander Anderson  
Date of Survey: Commenced October 6, 1863  
Completed October 13, 1863  
Original B.T.'S: 10" Spruce, N 76°W, 39 lks.  
12" W. Pine, S 54°E, 42 lks.

(f)(g)(h) DESCRIPTION OF MONUMENT FOUND AT THIS CORNER AND IF IT WAS ACCEPTED, STATE ALL EVIDENCE (MATERIAL, TESTIMONIAL, OCCUPATIONAL, PLATS, RECORDS, OTHER MONUMENTS) USED AS A BASIS FOR ESTABLISHING LOCATION. IF NOT ACCEPTED OR IF NOTHING WAS FOUND, STATE EVIDENCE USED AS BASIS FOR ESTABLISHING LOCATION. IF REESTABLISHED THROUGH LOST CORNER PROPORTIONATE METHODS, INDICATE ALL MONUMENTS, DISTANCES AND DIRECTIONS USED TO ESTABLISH. INDICATE TYPE OF MONUMENT AND SIGN POST FOUND OR SET.

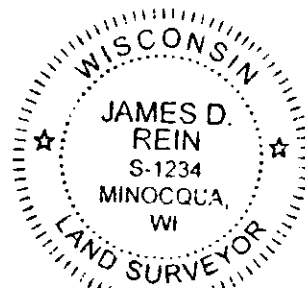
1936 - February 21 - Ray Hall: CCC Book 5, page 20; original cor 19-20-29 & 30, identified by post found in beaver flowage agreeing (for distance) with stp. of original Pine bt. no sign of spruce. Set county monument by record course and distance from stump. This falls 0.9' SW of post found (find old post down where we put mon.). Also set new scribed 5x5 cedar post, no new bearings available.  
1957 - Becker, Ownes - Illinois surveyor, mapped by W. H. Stuth, 5/2/86 filed in NEPCO Book 2, page 101; identifies corner monument "by others" referenced by a 13" SW, N 26°E, 129.4' and a 10" SW, S48°W, 125.4'. Note: This map shows measurements to the S 1/16 and E 1/4 corners, and also to the E 1/16 and S 1/4 corners.

2016 - September 28 - James D. Rein, PLS, No. 1234 - After performing surveying ties to the E 1/4, S 1/16, E 1/16 and S 1/4, corners and making a comparative analysis of Becker measurements, I find no remaining evidence of Becker's bt's and determine Hall's monument has been obliterated, by creek erosion and extensive beaver activity. Because Becker's measurements are more harmonious along the east section line, I re-establish the corner position by extending and doubling the distance measured from the E 1/4 corner through the recovered S 1/16 corner. This position is located within 3 feet of a (Becker) distance-distance intersection with the recovered E 1/16 corner monument. Note: I do not accept the recovered O & I monuments as marking the S 1/4 and E 1/16 corners, because their positions appear to be established based upon an erroneous southwest section corner position.

(c)(d)(e) PLAN VIEW OF CORNER WITH TIES TO AT LEAST 4 WITNESS MONUMENTS. IF IN DISAGREEMENT WITH PREVIOUSLY ESTABLISHED CORNER, SHOW THE DISTANCE BETWEEN THE TWO CORNERS AND ALSO INDICATE THE TIES TO THE DISPUTED CORNER.



(i) I, JAMES D. REIN, PROFESSIONAL LAND SURVEYOR NO. S-1234 HEREBY CERTIFY THAT THE CORNER LOCATION ON THIS RECORD WAS DETERMINED BY ME OR UNDER MY DIRECTION AND CONTROL AND THAT THIS U.S. PUBLIC LAND SURVEY MONUMENT RECORD IS CORRECT AND COMPLETE TO THE BEST OF MY KNOWLEDGE AND BELIEF.



SIGNATURE *[Handwritten Signature]*

DATE 11-16-16

3805-19 00 00

INDEX NO. R-5